

Harrisburg Area Transportation Study Environmental Justice Plan

Table of Contents	Page
Title VI Non-discrimination Policy Statement.....	3
Title VI Compliance Plan.....	4
<i>RPO History & Composition</i>	
<i>Title VI of the Civil Rights Act</i>	
<i>Executive Orders</i>	
Regional Demographics	8
<i>Environmental Justice Populations</i>	
<i>Other Sensitive Populations</i>	
<i>Coordinating Committee Make-up</i>	
Disadvantages Business Enterprise Program (DBE) Policy Statement.....	11
Title VI Complaint Procedures.....	12
Attachments:	
<i>Title VI Notice to the Public</i>	
<i>Title VI Complaint Form</i>	
<i>Environmental Justice Tracts Map</i>	
<i>Environmental Justice Hispanic/Latino Population Map</i>	
<i>Environmental Justice Households in Poverty Map</i>	
<i>Environmental Justice Racial Minority Populations Map</i>	

Title VI Non-discrimination Policy Statement

The Harrisburg Area Transportation Study (HATS) assures the U.S. Department of Transportation and the Pennsylvania Department of Transportation that no person shall on the basis of basis of race, color, disability, sex, age, low income, nationality or Limited English Proficiency, as provided by Title VI of the Civil Rights Act of 1964 as amended, Section 504 of the Rehabilitation Act of 1973, the Civil Rights Restoration Act of 1987, and the Americans with Disability Act of 1990, be excluded from participation in, be denied the benefits of, or be otherwise subjected to discrimination or retaliation under any program or activity.

HATS further agrees to the following responsibilities with respect to its programs and activities:

1. Designate a Title VI contact responsible for the day-to-day oversight of the HATS Title VI Program;
2. Designate an Equal Employment Opportunity contact responsible for the day-to-day oversight;
3. Designate an Affirmative Action contact responsible for the day-to-day oversight;
4. Circulate the HATS Policy Statement throughout the membership, post on website and to one or more newspapers;
5. Develop a complaint process and attempt to resolve complaints of discrimination;
6. Participate in training offered on Title VI and other nondiscrimination requirements;
7. Have a process to collect racial and ethnic data on persons impacted by the HATS's plans and programs.

This assurance is given in consideration of and for the purpose of obtaining any and all federal funds, grants, loans, properties, discounts or other federal assistance under all programs and activities and is binding. The person whose signature appears below is authorized to sign this assurance on behalf of HATS.



Timothy P. Reardon, AICP
TCRPC Executive Director

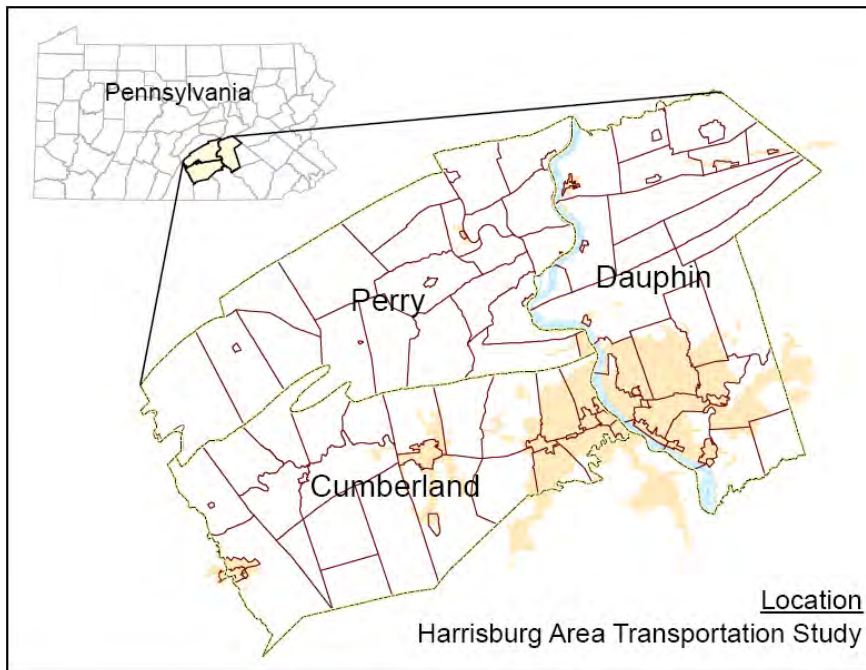
2/28/2014

Date

TITLE VI COMPLIANCE PLAN

MPO History & Composition

The Harrisburg Area Transportation Study (HATS) was created in response to the Federal-Aid Highway Act of 1962, which mandated regional transportation planning as a condition for receiving federal funds for transportation projects. More importantly, the transportation planning was required to be supported through a continuing, comprehensive, coordinated (3C) process – a tenet which still holds true today. HATS is the designated Metropolitan Planning Organization (MPO), an organization of federal, state, and local agencies, and officials from Cumberland, Dauphin, and Perry Counties, the City of Harrisburg, and Capital Area Transit, held accountable to implement the 3C process.



HATS serves 103 municipalities covering almost 1,700 square miles in south central Pennsylvania, including Cumberland, Dauphin and Perry Counties.

The area is home to over a half million people, with its development patterns and transportation system influenced by its geography and location. It lies within the Capital Region of Pennsylvania, in the fringe of a major urban corridor along

the US northeast coast, in the Appalachian Mountains and their foothills, and in the Susquehanna River Valley.

HATS is comprised of two committees: the Coordinating Committee and the Technical Committee. The Technical Committee oversees analyses and preparation of plans and studies, reviews transportation items brought before HATS to consider, and makes recommendations to the Coordinating Committee. The Coordinating Committee is the policy body, which formally takes action based on Technical Committee input, and adopts transportation plans and improvement programs. A Chairman, Vice-Chairman, and a Secretary lead the Technical and Coordinating Committees, each designated by election from the voting membership to one-year terms. Voting representation on the HATS Committees is as follows:

Table 1: Voting Representation of MPO Committees

Coordinating Committee		Technical Committee*	
Entity or Agency	Number of Votes	Entity or Agency	Number of Votes
Cumberland County	2	Cumberland County	2
Dauphin County	2	Dauphin County	2
Perry County	2	Perry County	2
Harrisburg City	2	Harrisburg City	2
CAT	1	CAT	1
PennDOT	2	PennDOT	2

*The HATS Coordinating Committee signed a Memorandum of Understanding with the York Area MPO (YAMPO) on June 27, 2003, which established that the planning and programming activities for the Harrisburg Urbanized Area within York County are now the responsibility of YAMPO. HATS signed a similar agreement with Lebanon County MPO (LebCo) on April 24, 2009. Ex-officio status on the HATS Technical Committee for both YAMPO and LebCo was approved on June 25, 2010.

In addition, the HATS Technical Committee includes ex-officio/non-voting members for major transportation providers in the region: Amtrak, Norfolk Southern Railroad, the Susquehanna Area Regional Airport Authority (SARAA), Pennsylvania Motor Truck Association (PMTA), and the Pennsylvania Turnpike Commission (PTC). The York Area MPO (YAMPO) and Lebanon County MPO (LEBCO) were approved as ex-officio members of the Technical Committee on June 25, 2010.

The Federal Highway Administration (FHWA), Federal Transit Administration (FTA), Federal Aviation Administration (FAA), Pennsylvania Department of Environmental Protection (PA DEP), and Pennsylvania Department of Community and Economic Development (PA DCED) are ex-officio members of both the Technical Committee and Coordinating Committee as well. This allows HATS to incorporate the expertise availed by these providers and agencies in its multi-modal decisions.

Tri-County Regional Planning Commission (TCRPC) functions as the lead staff agency of HATS and provides planning and administrative support services. It has the responsibility to ensure the transportation planning process is being carried out in accordance with federal and state regulations. HATS planning staff prepares the annual Unified Planning Work Program (UPWP), biennial Transportation Improvement Program (TIP), the Regional Transportation Plan and other planning studies supported by the FHWA, the FTA, PennDOT, and the municipalities HATS serves. The Congestion Management Process (CMP) is integrated into its overall program efforts as well.

Title VI of the Civil Rights Act

Title VI of the Civil Rights Act of 1964 is the federal law that protects individuals from discrimination on the basis of their race, color, or national origin in programs that receive federal financial assistance.

“No person in the United States shall, on the ground of race, color, or national origin, be excluded from participation in, be denied the benefits of, or be subjected to discrimination under any program or activity receiving federal financial assistance.”

There are many forms of illegal discrimination based on race, color, or national origin that can limit the opportunity of minorities to gain equal access to services and programs. For example, in operating a federally assisted program, a recipient cannot, on the basis of race, color, or national origin, either directly or through contractual means:

- Deny program services, aids, or benefits;
- Provide a different service, aid, or benefit, or provide them in a manner different than they are provided to others; or
- Segregate or separately treat individuals in any matter related to the receipt of any services, aid, or benefit.

Executive Orders

I. Environmental Justice (EJ)

Public participation must also take into consideration the Presidential Executive Order 12898, Environmental Justice. The Environmental Protection Agency defines Environmental Justice as the “fair treatment and meaningful involvement of people of all races, cultures and income with respect to development, implementation and enforcement of environmental laws, regulations, programs and policies.” Fair treatment means that no racial, ethnic or socioeconomic group should bear a disproportionate share of the negative environmental consequences resulting from the operation of industrial, municipal and commercial enterprises and from the execution of federal, state, local, and tribal programs and policies.

The Federal Highway Administration articulates three fundamental environmental justice principles:

- To avoid, minimize, or mitigate disproportionately high and adverse human health and environmental effects, including social and economic effects, on minority populations and low-income populations.
- To ensure the full and fair participation by all potentially affected communities in the transportation decision-making process.
- To prevent the denial of, reduction in, or significant delay in the receipt of benefits by minority and low-income populations.

Executive Order 12898 states: Each Federal agency shall make achieving environmental justice part of its mission by identifying and addressing, as appropriate, disproportionately high and adverse human health or environmental effects of its programs, policies, and activities on minority populations and low-income populations. Each Federal agency, whenever practicable and appropriate, shall collect, maintain, and analyze information assessing and comparing environmental and human health risks borne by populations identified by race, national origin, or income. To the extent practical and appropriate,

Federal agencies shall use this information to determine whether their programs, policies, and activities have disproportionately high and adverse human health or environmental effects on minority populations and low-income populations.

Therefore, all recipients of Federal aid are required to certify, and the USDOT must ensure, nondiscrimination under Title VI of the Civil Rights Act of 1964. For the purposes of long-range transportation planning, Metropolitan Planning Organizations (MPOs) and Regional Planning Organizations (RPOs) must address EJ in the process of developing and advancing transportation programs and projects.

As defined by the U.S. Department of Transportation Order on Environmental Justice, adverse effects mean "... the totality of significant individual or cumulative human health or environmental effects, including interrelated social and economic effects, which may include, but are not limited to:

- Bodily impairment, infirmity, illness, or death.
- Air, noise, and water pollution and soil contamination.
- Destruction or disruption of manmade or natural resources.
- Destruction or diminution of aesthetic values.
- Destruction or disruption of community cohesion or a community's economic vitality, destruction or disruption of the availability of public and private facilities and services, or vibration.
- Adverse employment effects; displacement of persons, businesses, farms, or nonprofit organizations.
- Increased traffic congestion, isolation, exclusion, or separation of minority or low-income individuals within a given community or from the broader community.
- The denial of, reduction in, or significant delay in the receipt of, benefits of DOT programs, policies, or activities".

Regional Demographics

Environmental Justice Populations

Table 2: White and Non-White Populations by County

County	Total	White	Black or African American	American Indian & Alaska Native	Asian alone	Native Hawaiian & Other Pacific Islander	Other	Population of two or more races:	Non-White	Percent non-White	Number of High Minority Tracts
Cumberland	233,726	213,511	7,254	337	6,243	65	1,616	4,700	20,215	8.6	1
Dauphin	266,576	197,096	46,819	289	7,994	91	6,140	8,147	69,480	26.1	26
Perry	45,785	44,575	317	62	109	2	303	417	1,210	2.6	0
Region	546,087	455,182	54,390	688	14,346	158	8,059	13,264	90,905	16.6	27

Source: US Census Bureau, 2010 Census

Table 3: Hispanic or Latino Populations by County

County	Total	Hispanic or Latino of Any Race	Percent Hispanic or Latino of Any Race	Number of High Hispanic or Latino Tracts
Cumberland	233,726	6,199	2.65	2
Dauphin	266,576	17,907	6.72	23
Perry	45,785	577	1.26	0
Region	546,087	24,683	4.52	25

Source: US Census Bureau, 2010 Census

Table 4: Low Income Families

County	Total Families	Families in Poverty	Percent Families in Poverty	Number of High Families in Poverty Tracts
Cumberland	61,457	2,520	4.1	5
Dauphin	67,287	6,190	9.2	21
Perry	13,063	888	6.8	2
Region	141,807	9,598	6.7	28

Source: US Census Bureau, 2011 5 year American Community Survey

Tables 2, 3 and 4 indicate the Environmental Justice population makeup of the region.

The census tracts that have been identified as ‘High Minority,’ ‘High Hispanic or Latino and ‘High Poverty’ Tracts were calculated using a threshold method. If a tract had a higher percentage of the attribute in question than the regional mean plus one half of the standard deviation, it was so designated. This method is generally accepted and was used in the HATS 2035 Regional Transportation

Plan.

Table 5: Environmental justice Census Tracts by County

County	Number of Census Tracts	Number of Environmental Justice Census Tracts
Cumberland	49	6
Dauphin	65	33
Perry	10	2
Region	124	41

Table 5 indicates the number of census tracts in each county and the number designated as Environmental Justice Census Tracts. Environmental Justice Tracts are those designated as High Minority, High Hispanic and Latino and/or High Poverty Tracts.

The Environmental Justice Tracts Map on the next page shows the locations of those tracts within the region.

Other Sensitive Populations

Other populations in our area are deemed to have special transportation needs.

“Limited English Proficient” or “LEP” persons are those individuals who do not speak English as their primary language, and who also have a limited ability to read, speak, write or understand English. The key commonality among LEP persons is their inability to communicate effectively in the English language, regardless of their native tongue. People who are multi-lingual, those that speak one or more languages in addition to being proficient in English, are not considered to be Limited English Proficient.

Table 6: English Proficiency for Population over 5 Years Old by County

County	Population 5 and Older	Speaks English less than "very well"	Percent Speak English less than "very well"
Cumberland County	221,182	6,057	2.7
Dauphin County	249,896	9,829	3.9
Perry County	43,055	353	0.8
Total	514,133	16,239	3.2

Source: U.S. Census Bureau; 2011 5 year American Community Survey

Table 7: Top Languages Spoken by Non-English Proficient Population

Geography	Population Over 5 Years Old	Spanish	Vietnamese	Arabic	Other Western Germanic	Serbo-Croatian	Chinese
Cumberland County	221,182	1,419	297	621	532	633	301
Dauphin County	249,896	4,874	1,267	267	251	161	460
Perry County	43,055	168	0	0	72	6	0
Total	514,133	6,461	1,564	888	855	800	761
Percent	100	1.26	0.3	0.17	0.17	0.16	0.15

Source: U.S. Census Bureau, 2011 5 year American Community Survey

It has been determined that English is the primary language and Spanish is the second most spoken language in the HATS area. The other top languages spoken by non-English proficient speakers are outlined in Table 7. For individuals who do not speak English, PennDOT has contracted a language line that operates 24 hours a day, 7 days a week during which an interpreter is available. The telephone number is 1-877-684-3543.

Additionally, HATS has access to the International Service Center located in Harrisburg which can provide support services in many languages.

The Amish, Old Order Mennonite and Other Plain Sect Communities

Central Pennsylvania is home to a large number of Plain Sect communities. These groups have unique transportation needs and should be fully engaged during planning processes. The HATS region is no exception.

It is generally accepted that northern Dauphin County and the western portions of Cumberland and Perry Counties contain a significant number of Amish and Plain Sect communities. Because these groups believe in the separation of their communities from that of larger society, it can be difficult to get definite population numbers or the exact boundaries of church groups. During comprehensive planning activities or project development, it is recommended that HATS use local resources, like elected officials, to help identify and engage Amish and Plain Sect communities.

Coordinating Committee Make-Up

Table 8: Coordinating Committee Representation by Race of Member

Organization	Caucasian	Black or African American	Asian	American Indian & Alaska Native	Native Hawaiian & Other Pacific	Other	Two or More Races
Cumberland County	X						
Cumberland County	X						
Dauphin County	X						
Dauphin County	X						
Perry County	X						
Perry County	X						
Harrisburg City	X						
Harrisburg City	X						
Capital Area Transit	X						
Capital Area Transit	X						
PennDOT	X						
PennDOT	X						

Table 8 indicates the racial makeup of HATS voting members on the Coordinating Committee. It does not include alternatives, *ex-officio* members or non-member participants. County and the City of Harrisburg appointments are made by the elected officials. CAT appointments are made by the CAT Board. PennDOT appointments are made by the Department.

The MPO encourages the participation of minorities on decision-making bodies and membership should be as diverse as the region. It is a priority that all citizens within the planning boundaries be given the opportunity to participate in the transportation planning process, including low-income individuals, the elderly, persons with disabilities, and persons with Limited English proficiency (LEP).

Disadvantaged Business Enterprise Program (DBE) Policy Statement

HATS is committed to ensuring non-discrimination during the selection of contractors and sub-contractors for PennDOT funded projects. These policies are outlined in the Master Agreement between the two entities, excerpted below:

“21. Nondiscrimination Assurance

- (a) The GRANTEE shall not discriminate on the basis of race, color, national origin or sex in the performance of this Agreement. The GRANTEE shall carry out applicable requirements of 49 CFR Part 26 in the award and administration of United States of Transportation-assisted agreements. Failure by the GRANTEE to carry out these requirements is a material breach of this Agreement, which may result in the termination of this Agreement or any other remedy as the DEPARTMENT deems appropriate.
- (b) If the GRANTEE is providing services or supplies for the DEPARTMENT pursuant to this Agreement, it must include this assurance in each subcontract that it signs with a subcontractor. If the GRANTEE is a grantee or other recipient of funds from the DEPARTMENT, it must include this assurance in each contract into which it enters to carry out the project or activities being funded by this Agreement.”

Additionally, HATS works with PennDOT during contracting to ensure that Department goals for Disadvantaged Business Enterprise (as defined in US DOT Code of Federal Regulations 49 part 26.5) inclusion are met. DBE goal requirements are set by PennDOT are coordinated with the MPO on a project-by-project basis.

Title VI Complaint Procedures

Purpose:

The HATS Title VI Complaint Procedures is written to specify the process employed by HATS to investigate complaints, while ensuring due process for Complainants and Respondents. The process does not preclude HATS from attempting to informally resolve complaints.

This procedure applies to all external complaints relating to any program or activity administered by HATS and/or its subrecipients, consultants and contractors, filed under Title VI of the Civil Rights Act of 1964 as amended, (including Disadvantage Business Enterprise and Equal Employment Opportunity components), as well as other related laws that prohibit discrimination on the basis of race, color, disability, sex, age, low income, nationality or Limited English Proficiency. Additional statutes include, but not limited to, Section 504 of the Rehabilitation Act of 1973, the Civil Rights Restoration Act of 1987, and the Americans with Disability Act of 1990.

These procedures are part of an administrative process that does not provide for remedies that include punitive damages or compensatory remuneration for the Complainant. Intimidation or retaliation of any kind is prohibited by law.

Process:

An individual, or his or her representative, who believes that he or she has been subject to discrimination or retaliation prohibited by Title VI and other nondiscrimination provisions, has the right to file a complaint. Complaints need to be filed within 180 calendar days of alleged occurrence, when the alleged discrimination became known to the Complainant, or when there has been a continuing course of conduct, the date on which the conduct was discontinued or latest instance of the conduct.

Complaints may be mailed to:

Tim Smith
Title VI Compliance Officer
HATS
112 Market Street, 2nd Floor
Harrisburg, Pennsylvania 17101

Matt Kelly
Title VI Coordinator
Bureau of Equal Opportunity
Pennsylvania Department of Transportation,
PO Box 3251
Harrisburg, Pennsylvania 17105-1720

Equal Opportunity Specialist
U.S. Department of Transportation
Federal Highway Administration
228 Walnut Street; Room 508
Harrisburg, PA 17105-1720

Equal Opportunity Specialist
PA Human Relations Commission
Harrisburg Regional Office
Riverfront Office Center, 5th Floor
1101-1125 South Front Street
Harrisburg, PA 17104-2515

U.S. Department of Justice
Civil Rights Division
950 Pennsylvania Avenue, N.W.
Office of the Assistant Attorney General, Main
Washington, D.C. 20530

Civil Rights Officer
U.S. Department of Transportation
Federal Transit Administration
1760 Market Street
Suite 500
Philadelphia, PA 19103-4124

Title VI Coordinator
Office of Civil Rights
Federal Aviation Administration
800 Independence Ave., SW
Washington, DC 20591

Complaints shall be in writing and signed by the Complainant(s). If complaints are received by telephone or in person, the Title VI Compliance Officer or other authorized representative shall formally interview the person to provide the basis for the written complaint. If necessary, the authorized person will assist the Complainant in writing the complaint. The written complaint must include the following information:

- Name, address and telephone number of Complainant
- Basis of the complaint (e.g., Race, Color, National Origin, Sex, Age, Disability or Retaliation)
- A detailed description of the circumstances of the incident that lead the Complainant to believe discrimination occurred.
- Names address and phones numbers of people who may have knowledge of the alleged incident or are perceived as parties in the complained-of-incident.
- Date or dates on which the alleged discrimination occurred
- Other agencies where the complaint was filed.
- As an investigation moves forward, additional information may be required.

If HATS cannot resolve any matters informally, the Commission will acknowledge receipt of the complaint by notifying the Complainant and immediately transmitting the complaint to the proper state or federal agency (e.g. Federal Highway Administration, Federal Transit Administration, and PennDOT) for investigation and disposition pursuant to that agency's Title VI complaint procedures. This can be done electronically or by mailing a hard copy. The Department of Justice has final word on what agency will investigate the claim.

The HATS Title VI Compliance Officer will maintain a log of all complaints received by the Commission.

Attachments

Title VI Notice to the Public

Title VI Complaint Form

EJ Tracts Map

Title VI Notice to the Public

The Harrisburg Area Transportation Study (HATS) hereby gives public notice of its policy to assure full compliance with Title VI of the Civil Rights Act of 1964. HATS is committed to ensuring that no person is excluded from participation in, or denied the benefits of its services on the basis of race, color, disability, sex, age, low income, nationality or Limited English Proficiency, as provided by Title VI of the Civil Rights Act of 1964 as amended, Section 504 of the Rehabilitation Act of 1973, the Civil Rights Restoration Act of 1987, and the Americans with Disability Act of 1990, be excluded from participation in, be denied the benefits of, or be otherwise subjected to discrimination or retaliation under any program or activity.

Any person who believes that they have, individually, or as a member of any specific class of persons, been subjected to discrimination on the basis of race, color, disability, sex, age, low income, nationality or Limited English Proficiency may file a complaint with HATS. Complaints need to be filed within 180 calendar days of alleged occurrence, when the alleged discrimination became known to the Complainant, or when there has been a continuing course of conduct, the date on which the conduct was discontinued or latest instance of the conduct.

**HATS
TITLE VI COMPLAINT FORM**

Please Print All Information Below

Complainant Name: _____

Name of Individual assisting Complainant: _____

Complainant Address:

Assisting Individual Address:

Complainant Phone #

Assisting Individual Phone #

Basis of Complaint: (e.g., Race, Color, National Origin, Sex, Age, Disability, Retaliation)

Date(s) of alleged discrimination:

Please provide a detailed description of the circumstances of the incident(s), including any additional information supporting your complaint (please use additional pages as necessary):

Please provide the name(s), title and address of the person who discriminated against the Complainant.

Please provide, if applicable, names and contact information of people who may have knowledge of the alleged incident(s) or are perceived as parties in the complained-of incident(s):

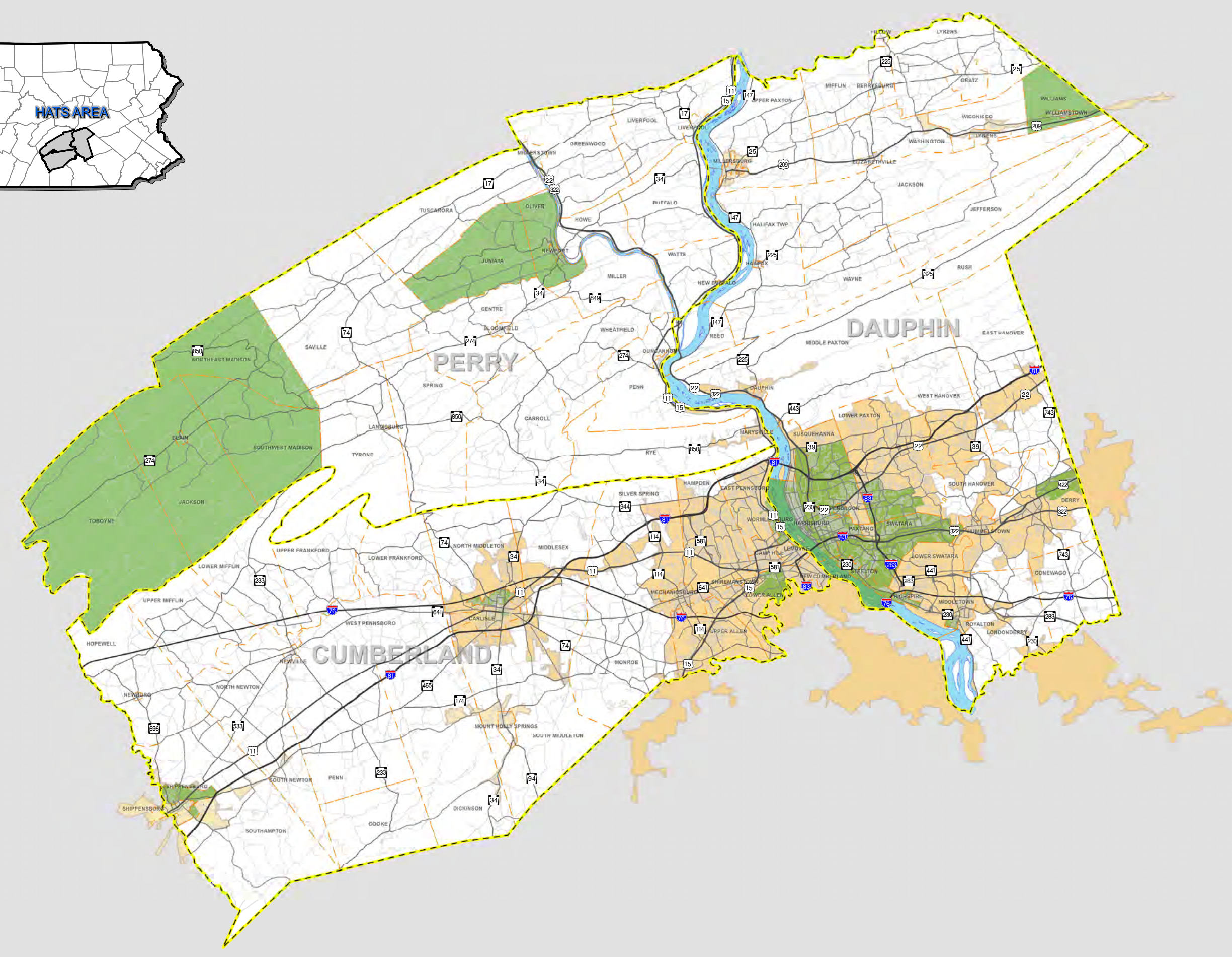
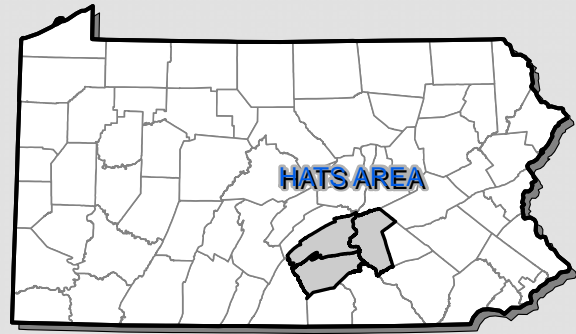
Please list any other agency where complaint has been filed:

Complainant Signature:

Date:

Next Action:

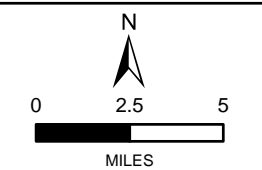
To file complaint, mail form to:
Tri-County Regional Planning Commission
Attn: Tim Smith
112 Market Street, 2nd Floor
Harrisburg, PA 17101



ENVIRONMENTAL JUSTICE TRACTS

HATS AREA SERVING:
CUMBERLAND, DAUPHIN, AND
PERRY COUNTIES.

- ENVIRONMENTAL JUSTICE TRACTS
- COUNTY BOUNDARY
- MUNICIPAL BOUNDARY
- URBANIZED AREA
- URBAN CLUSTER
- RIVER

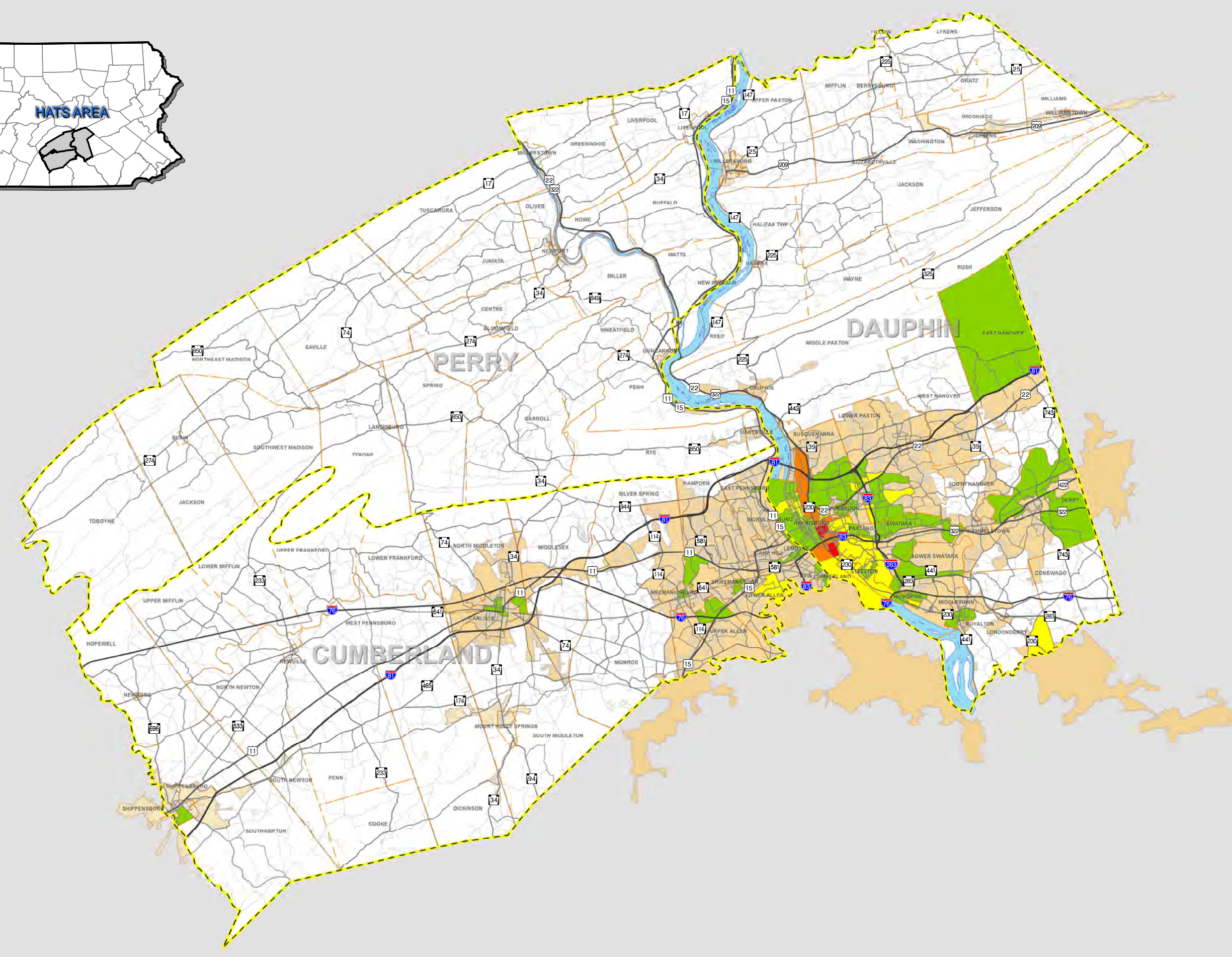
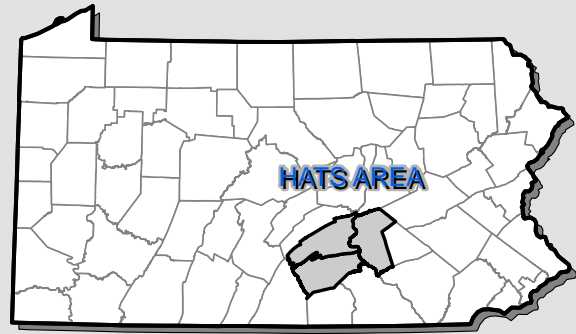


HATS HARRISBURG
AREA
TRANSPORTATION
STUDY

**TRI-COUNTY
REGIONAL
PLANNING
COMMISSION**
find us on the web @ www.trcpc-pa.org

PREPARED DATE: APRIL 2013
PREPARED BY: TRI-COUNTY REGIONAL PLANNING COMMISSION
SOURCE DATA: PENNDOT 2012, CENSUS 2000, & DAUPHIN GIS DEPARTMENT

TRI-COUNTY REGIONAL PLANNING COMMISSION AND COUNTY PLANNING COMMISSION MAKE NO WARRANTY OR REPRESENTATION, EITHER EXPRESSED OR IMPLIED, WITH RESPECT TO THE ACCURACY OF DATA REPRESENTED FOR ANY PARTICULAR PURPOSE. THE DATA IS PROVIDED AS IS AND THE USER ASSUMES ALL RISK OF USE.



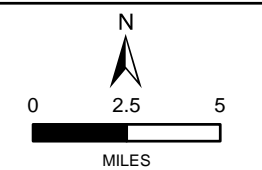
Environmental Justice Hispanic/Latino Population

HATS AREA SERVING:
CUMBERLAND, DAUPHIN, AND
PERRY COUNTIES.

Percent Hispanic/Latino

- Below 5%
- 5 - 10%
- 10 - 20%
- 20 - 30%
- Over 30%

- COUNTY BOUNDARY
- MUNICIPAL BOUNDARY
- URBANIZED AREA
- URBAN CLUSTER
- RIVER

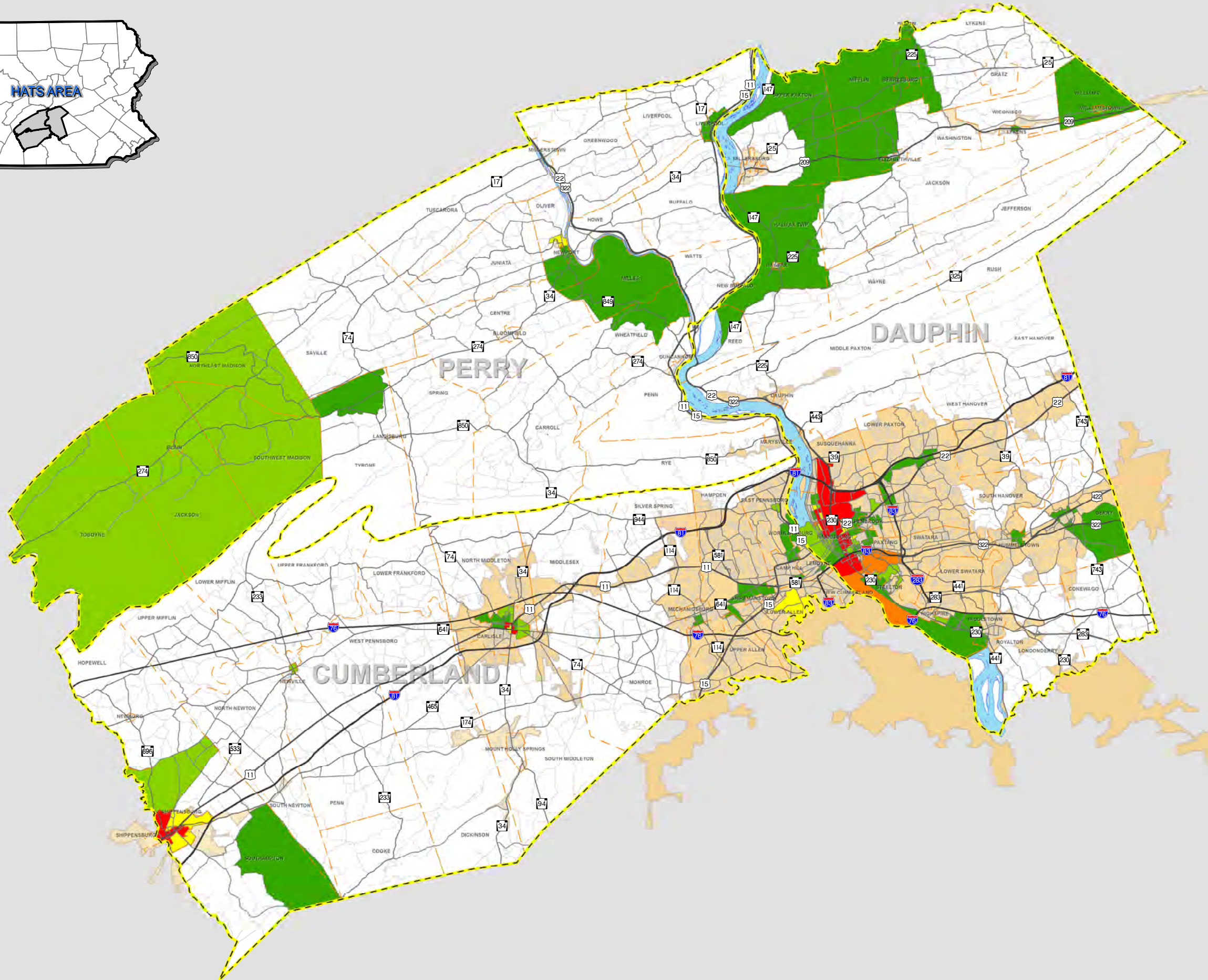
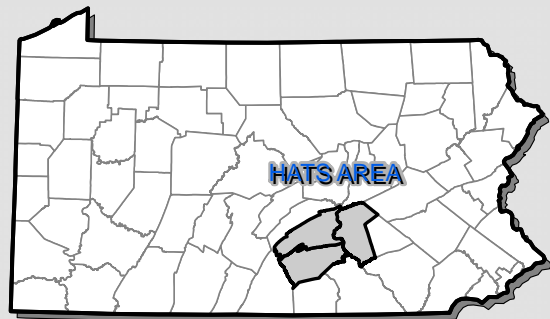


HATS HARRISBURG
AREA
TRANSPORTATION
STUDY

**TRI-COUNTY
REGIONAL
PLANNING
COMMISSION**
find us on the web @ www.trcpc-pa.org

PREPARED DATE: APRIL 2013
PREPARED BY: TRI-COUNTY REGIONAL PLANNING
COMMISSION
SOURCE DATA: PENNDOT 2012, CENSUS 2000, &
DAUPHIN GIS DEPARTMENT

TRI-COUNTY REGIONAL PLANNING COMMISSION AND COUNTY PLANNING COMMISSION
MAKE NO WARRANTY OR REPRESENTATION, EITHER EXPRESSED OR IMPLIED, WITH
RESPECT TO THE ACCURACY OF DATA REPRESENTED FOR ANY PARTICULAR PURPOSE.
THE DATA IS PROVIDED AS IS AND THE USER ASSUMES ALL RISK OF USE.



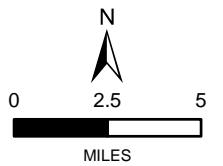
Environmental Justice Households in Poverty

HATS AREA SERVING: CUMBERLAND, DAUPHIN, AND PERRY COUNTIES.

Percent Households Below Poverty Level

- 10 - 15%
- 15 - 20%
- 20 - 25%
- 25 - 30%
- Over 30%

- COUNTY BOUNDARY
- MUNICIPAL BOUNDARY
- URBANIZED AREA
- URBAN CLUSTER
- RIVER



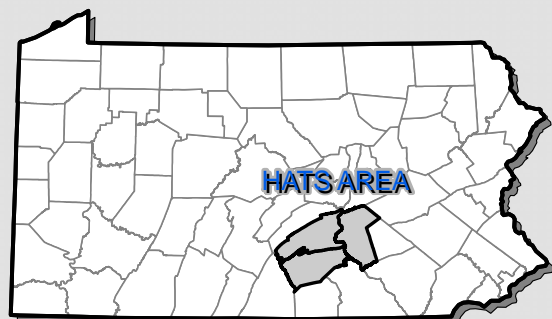
HATS HARRISBURG AREA TRANSPORTATION STUDY

TRI-COUNTY REGIONAL PLANNING COMMISSION

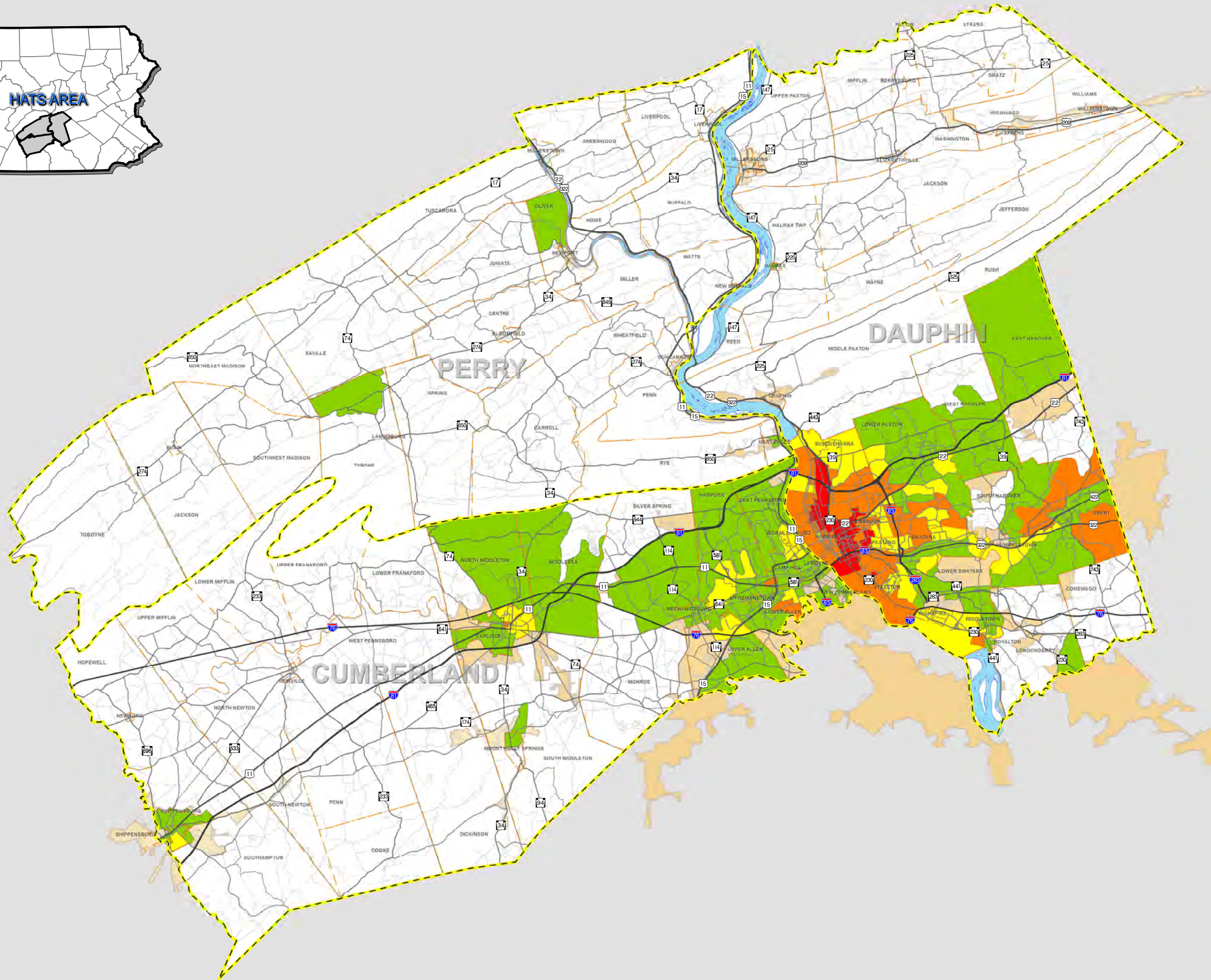
find us on the web @ www.trcpc-pa.org

PREPARED DATE: APRIL 2013
 PREPARED BY: TRI-COUNTY REGIONAL PLANNING COMMISSION
 SOURCE DATA: PENNDOT 2012, CENSUS 2000, & DAUPHIN GIS DEPARTMENT

TRI-COUNTY REGIONAL PLANNING COMMISSION AND COUNTY PLANNING COMMISSION MAKE NO WARRANTY OR REPRESENTATION, EITHER EXPRESSED OR IMPLIED, WITH RESPECT TO THE ACCURACY OF DATA REPRESENTED FOR ANY PARTICULAR PURPOSE. THE DATA IS PROVIDED AS IS AND THE USER ASSUMES ALL RISK OF USE.



HATS AREA



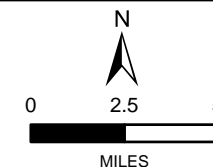
Environmental Justice Racial Minority Populations

HATS AREA SERVING:
CUMBERLAND, DAUPHIN, AND
PERRY COUNTIES.

Percent Racial Minority

- Below 5%
- 5 - 15%
- 15 - 30%
- 30 - 60%
- Over 60%

- COUNTY BOUNDARY
- MUNICIPAL BOUNDARY
- URBANIZED AREA
- URBAN CLUSTER
- RIVER



HATS HARRISBURG
AREA
TRANSPORTATION
STUDY

**TRI-COUNTY
REGIONAL
PLANNING
COMMISSION**

find us on the web @ www.tcrpc-pa.org

PREPARED DATE: APRIL 2013
PREPARED BY: TRI-COUNTY REGIONAL PLANNING
COMMISSION
SOURCE DATA: PENNDOT 2012, CENSUS 2000, &
DAUPHIN GIS DEPARTMENT

TRI-COUNTY REGIONAL PLANNING COMMISSION AND COUNTY PLANNING COMMISSION
MAKE NO WARRANTY OR REPRESENTATION, EITHER EXPRESSED OR IMPLIED, WITH
RESPECT TO THE ACCURACY OF DATA REPRESENTED FOR ANY PARTICULAR PURPOSE.
THE DATA IS PROVIDED AS IS AND THE USER ASSUMES ALL RISK OF USE.