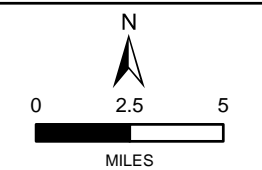


ENVIRONMENTAL JUSTICE TRACTS

HATS AREA SERVING:
CUMBERLAND, DAUPHIN, AND
PERRY COUNTIES.

- ENVIRONMENTAL JUSTICE TRACTS
- COUNTY BOUNDARY
- MUNICIPAL BOUNDARY
- URBANIZED AREA
- URBAN CLUSTER
- RIVER

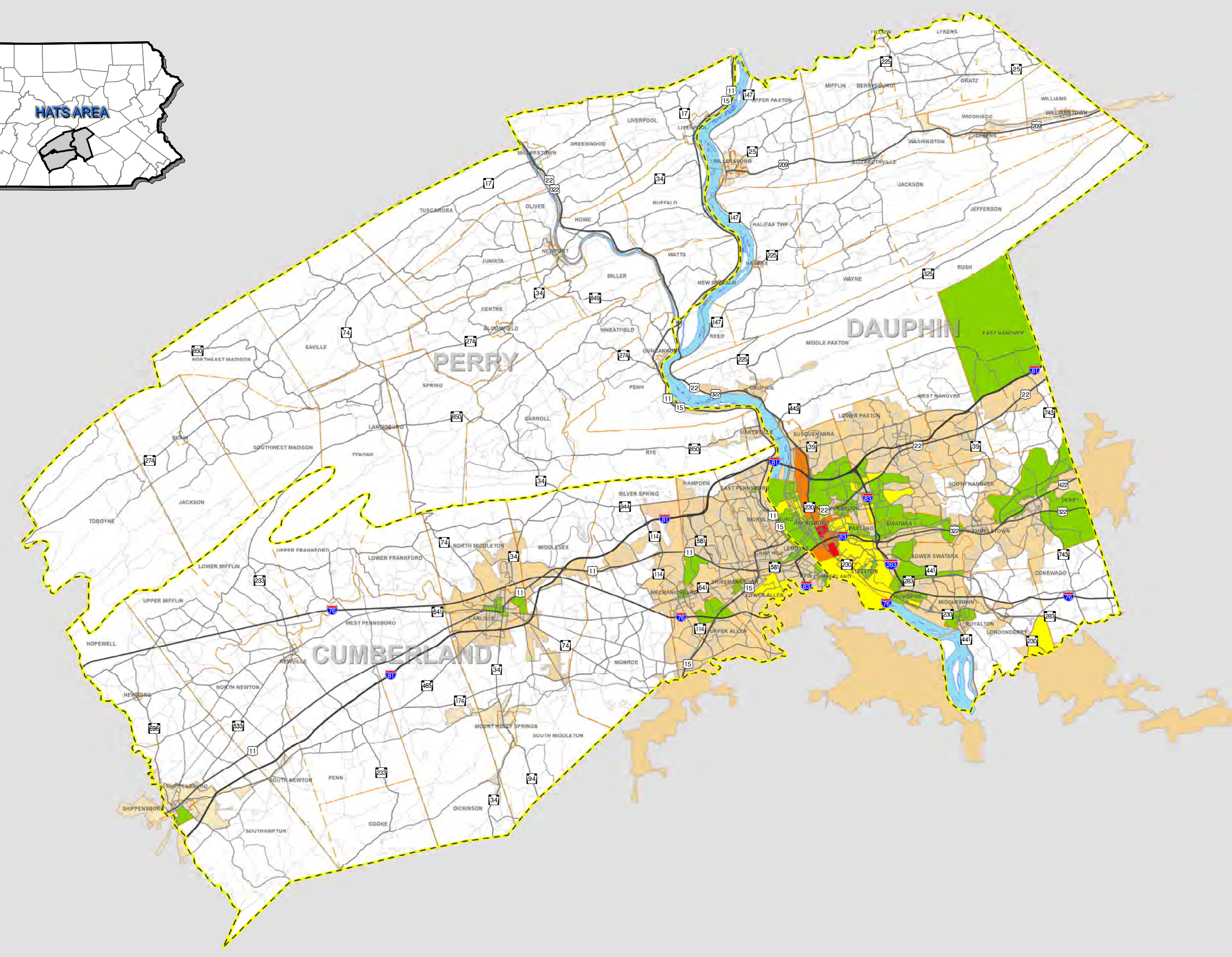
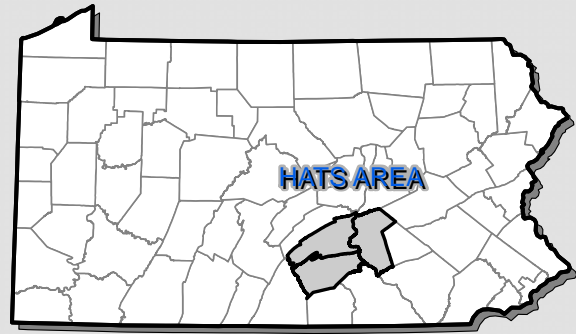


HATS HARRISBURG
AREA
TRANSPORTATION
STUDY

**TRI-COUNTY
REGIONAL
PLANNING
COMMISSION**
find us on the web @ www.trcpc-pa.org

PREPARED DATE: APRIL 2013
PREPARED BY: TRI-COUNTY REGIONAL PLANNING COMMISSION
SOURCE DATA: PENNDOT 2012, CENSUS 2000, & DAUPHIN GIS DEPARTMENT

TRI-COUNTY REGIONAL PLANNING COMMISSION AND COUNTY PLANNING COMMISSION MAKE NO WARRANTY OR REPRESENTATION, EITHER EXPRESSED OR IMPLIED, WITH RESPECT TO THE ACCURACY OF DATA REPRESENTED FOR ANY PARTICULAR PURPOSE. THE DATA IS PROVIDED AS IS AND THE USER ASSUMES ALL RISK OF USE.



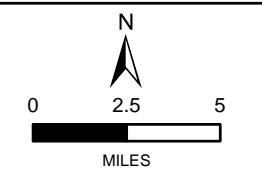
Environmental Justice Hispanic/Latino Population

HATS AREA SERVING:
CUMBERLAND, DAUPHIN, AND
PERRY COUNTIES.

Percent Hispanic/Latino

- Below 5%
- 5 - 10%
- 10 - 20%
- 20 - 30%
- Over 30%

- COUNTY BOUNDARY
- MUNICIPAL BOUNDARY
- URBANIZED AREA
- URBAN CLUSTER
- RIVER

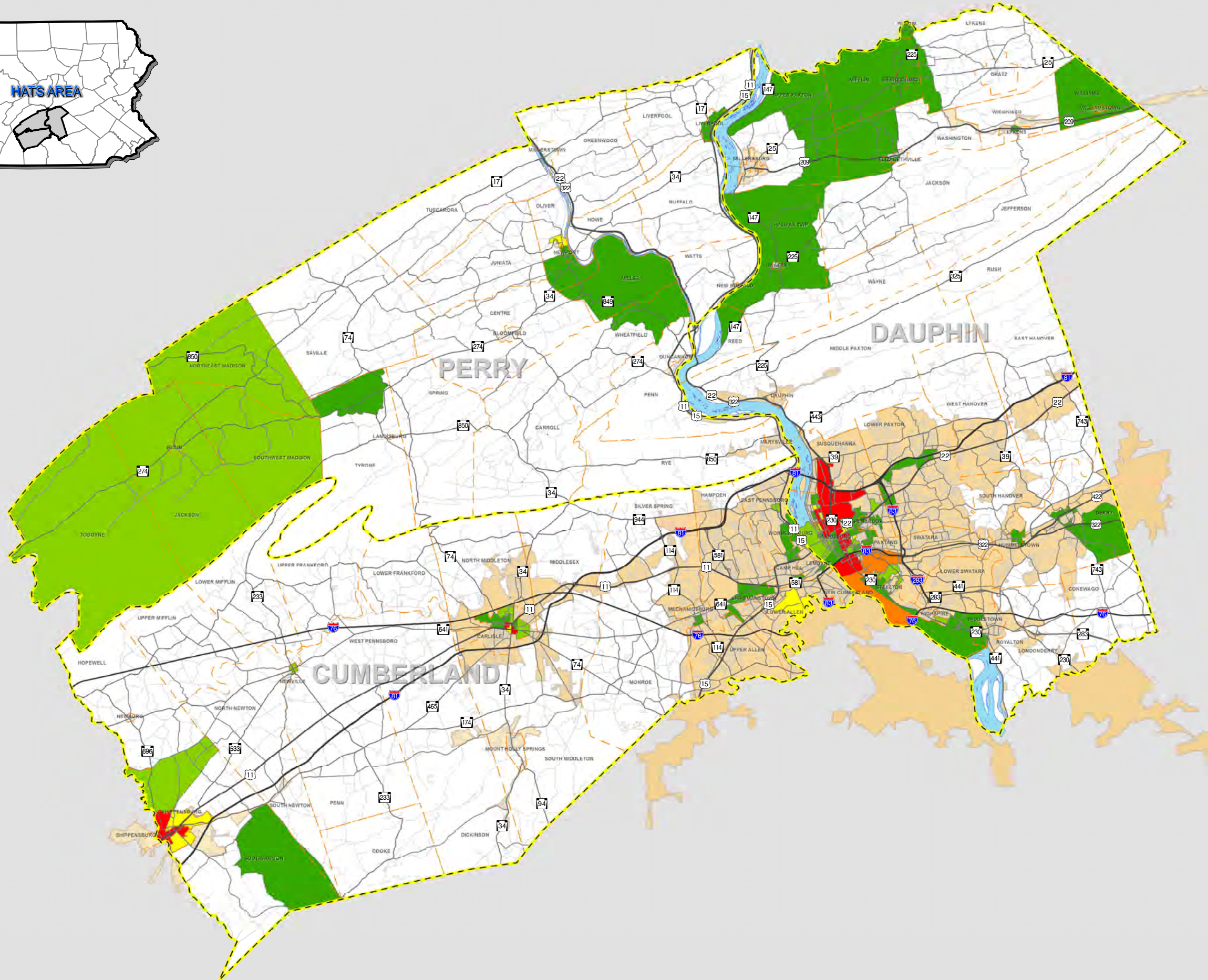
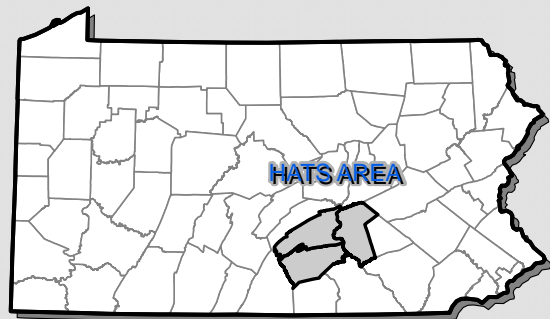


HATS HARRISBURG
AREA
TRANSPORTATION
STUDY

**TRI-COUNTY
REGIONAL
PLANNING
COMMISSION**
find us on the web @ www.trcpc-pa.org

PREPARED DATE: APRIL 2013
PREPARED BY: TRI-COUNTY REGIONAL PLANNING
COMMISSION
SOURCE DATA: PENNDOT 2012, CENSUS 2000, &
DAUPHIN GIS DEPARTMENT

TRI-COUNTY REGIONAL PLANNING COMMISSION AND COUNTY PLANNING COMMISSION
MAKE NO WARRANTY OR REPRESENTATION, EITHER EXPRESSED OR IMPLIED, WITH
RESPECT TO THE ACCURACY OF DATA REPRESENTED FOR ANY PARTICULAR PURPOSE.
THE DATA IS PROVIDED AS IS AND THE USER ASSUMES ALL RISK OF USE.



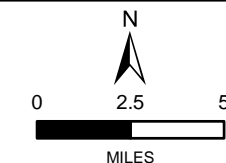
Environmental Justice Households in Poverty

HATS AREA SERVING: CUMBERLAND, DAUPHIN, AND PERRY COUNTIES.

Percent Households Below Poverty Level

- 10 - 15%
- 15 - 20%
- 20 - 25%
- 25 - 30%
- Over 30%

- COUNTY BOUNDARY
- MUNICIPAL BOUNDARY
- URBANIZED AREA
- URBAN CLUSTER
- RIVER



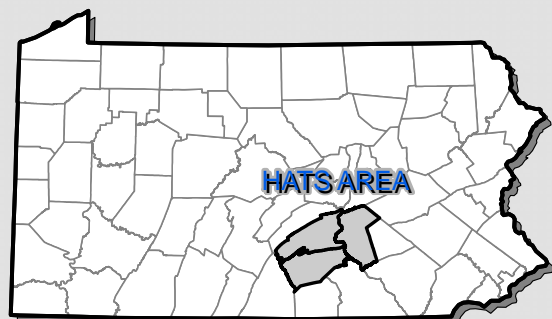
HATS HARRISBURG AREA TRANSPORTATION STUDY

TRI-COUNTY REGIONAL PLANNING COMMISSION

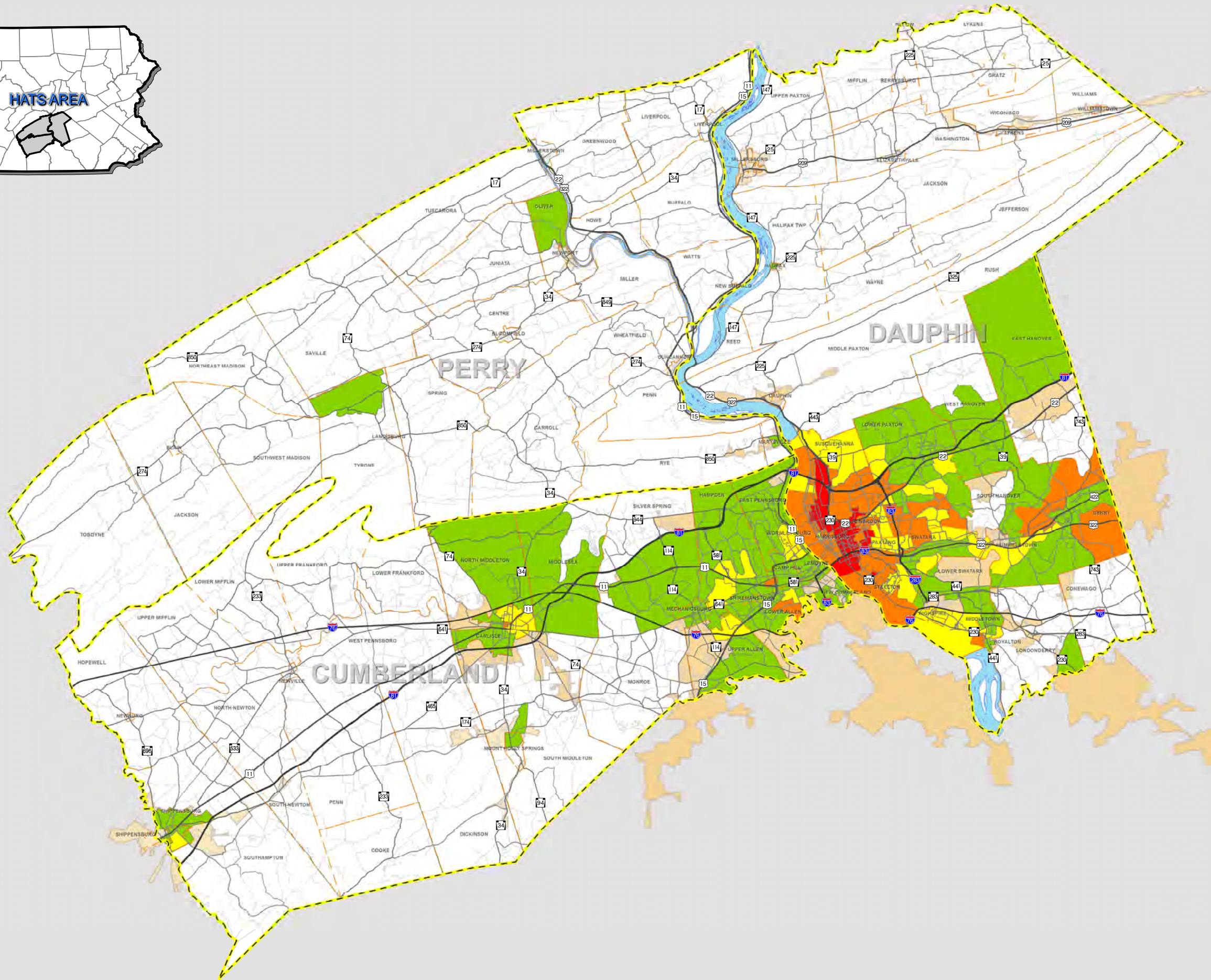
find us on the web @ www.trcpc-pa.org

PREPARED DATE: APRIL 2013
 PREPARED BY: TRI-COUNTY REGIONAL PLANNING COMMISSION
 SOURCE DATA: PENNDOT 2012, CENSUS 2000, & DAUPHIN GIS DEPARTMENT

TRI-COUNTY REGIONAL PLANNING COMMISSION AND COUNTY PLANNING COMMISSION MAKE NO WARRANTY OR REPRESENTATION, EITHER EXPRESSED OR IMPLIED, WITH RESPECT TO THE ACCURACY OF DATA REPRESENTED FOR ANY PARTICULAR PURPOSE. THE DATA IS PROVIDED AS IS AND THE USER ASSUMES ALL RISK OF USE.



HATS AREA



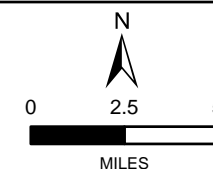
Environmental Justice Racial Minority Populations

HATS AREA SERVING:
CUMBERLAND, DAUPHIN, AND
PERRY COUNTIES.

Percent Racial Minority

- Below 5%
- 5 - 15%
- 15 - 30%
- 30 - 60%
- Over 60%

- COUNTY BOUNDARY
- MUNICIPAL BOUNDARY
- URBANIZED AREA
- URBAN CLUSTER
- RIVER



find us on the web @ www.tcrpc-pa.org

PREPARED DATE: APRIL 2013
 PREPARED BY: TRI-COUNTY REGIONAL PLANNING COMMISSION
 SOURCE DATA: PENNDOT 2012, CENSUS 2000, & DAUPHIN GIS DEPARTMENT

TRI-COUNTY REGIONAL PLANNING COMMISSION AND COUNTY PLANNING COMMISSION MAKE NO WARRANTY OR REPRESENTATION, EITHER EXPRESSED OR IMPLIED, WITH RESPECT TO THE ACCURACY OF DATA REPRESENTED FOR ANY PARTICULAR PURPOSE. THE DATA IS PROVIDED AS IS AND THE USER ASSUMES ALL RISK OF USE.