



### Transportation Need

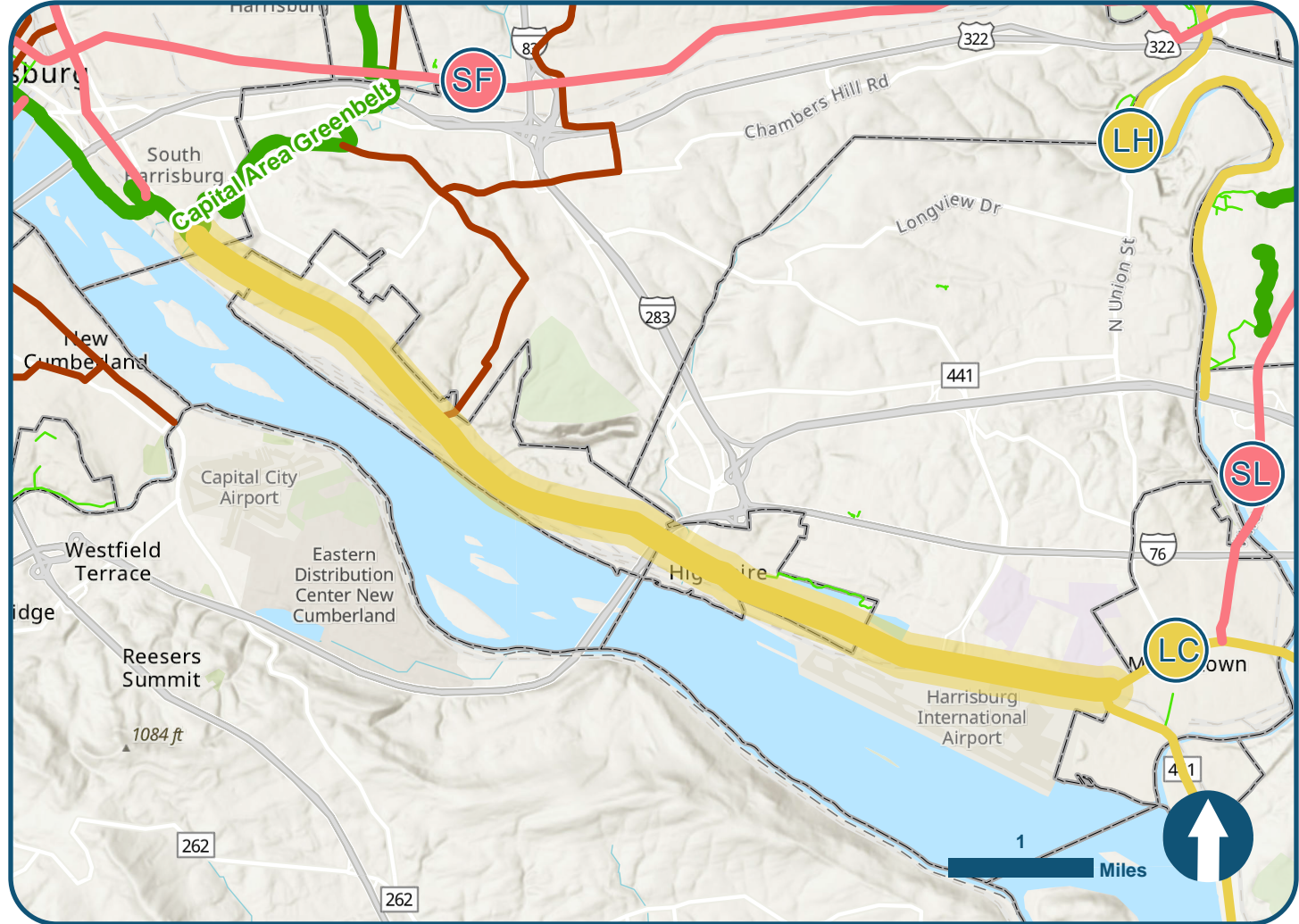
Providing a designated non-motorized transportation facility connecting the Capital Area Greenbelt to Middletown Borough, through Steelton and Highspire Boroughs

### Comments

Critical gap connecting major regional trail networks, enabling long distance non-motorized transportation; designated part of PA Bike Route J; possible route of September 11 National Memorial Trail

### Legend

- Short Term Priorities
- Long Term Priorities
- Existing Minor Trails
- Existing Major Facilities
- In Development
- Proposed Off-road
- Proposed On-road



**Municipality:** Swatara and Lower Swatara Townships, Highspire and Steelton Boroughs

**Location:** Front Street/SR 230 from Harrisburg to Middletown Borough

**Length:** 7.23 miles

**Non-motorized Crash History (2012-2022):** 22 total crashes (1 fatality, 5 serious injuries)

**Relevant Studies:** PEC Trail Connectivity Assessment



### Transportation Need

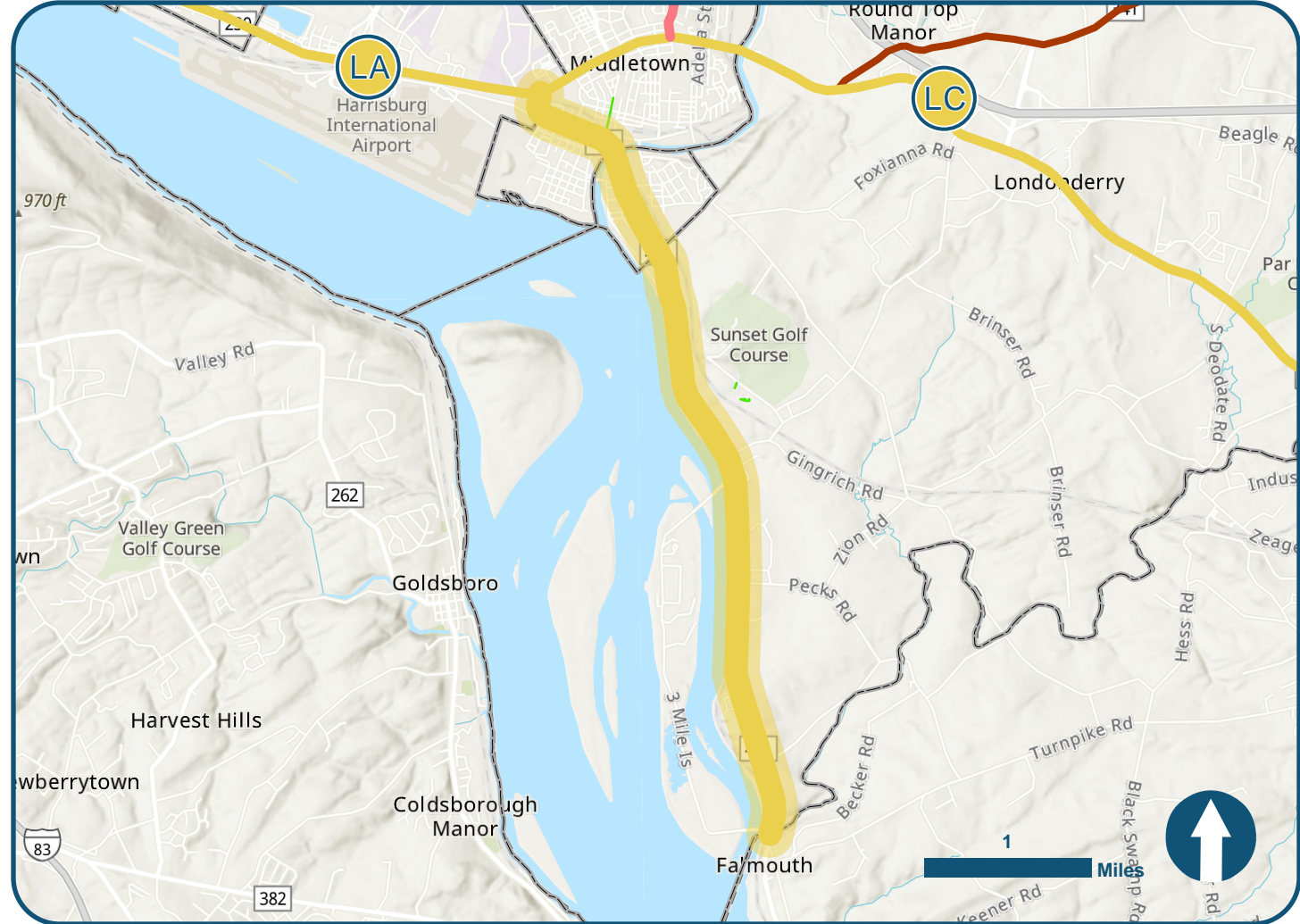
Providing a designated non-motorized transportation facility connecting Middletown Borough to Northwest Lancaster County River Trail

### Comments

Critical gap connecting major regional trail networks, enabling long distance non-motorized transportation; possible route for September 11 National Memorial Trail

### Legend

- Short Term Priorities
- Long Term Priorities
- Existing Minor Trails
- Existing Major Facilities
- In Development
- Proposed Off-road
- Proposed On-road



**Municipality:** Londonderry Township, Middletown and Royalton Boroughs

**Location:** River Road/SR 441 from Middletown Borough to Dauphin County boundary

**Length:** 4.92 miles

**Non-motorized Crash History (2012-2022):** 2 total crashes

**Relevant Studies:** PEC Trail Connectivity Assessment





### Transportation Need

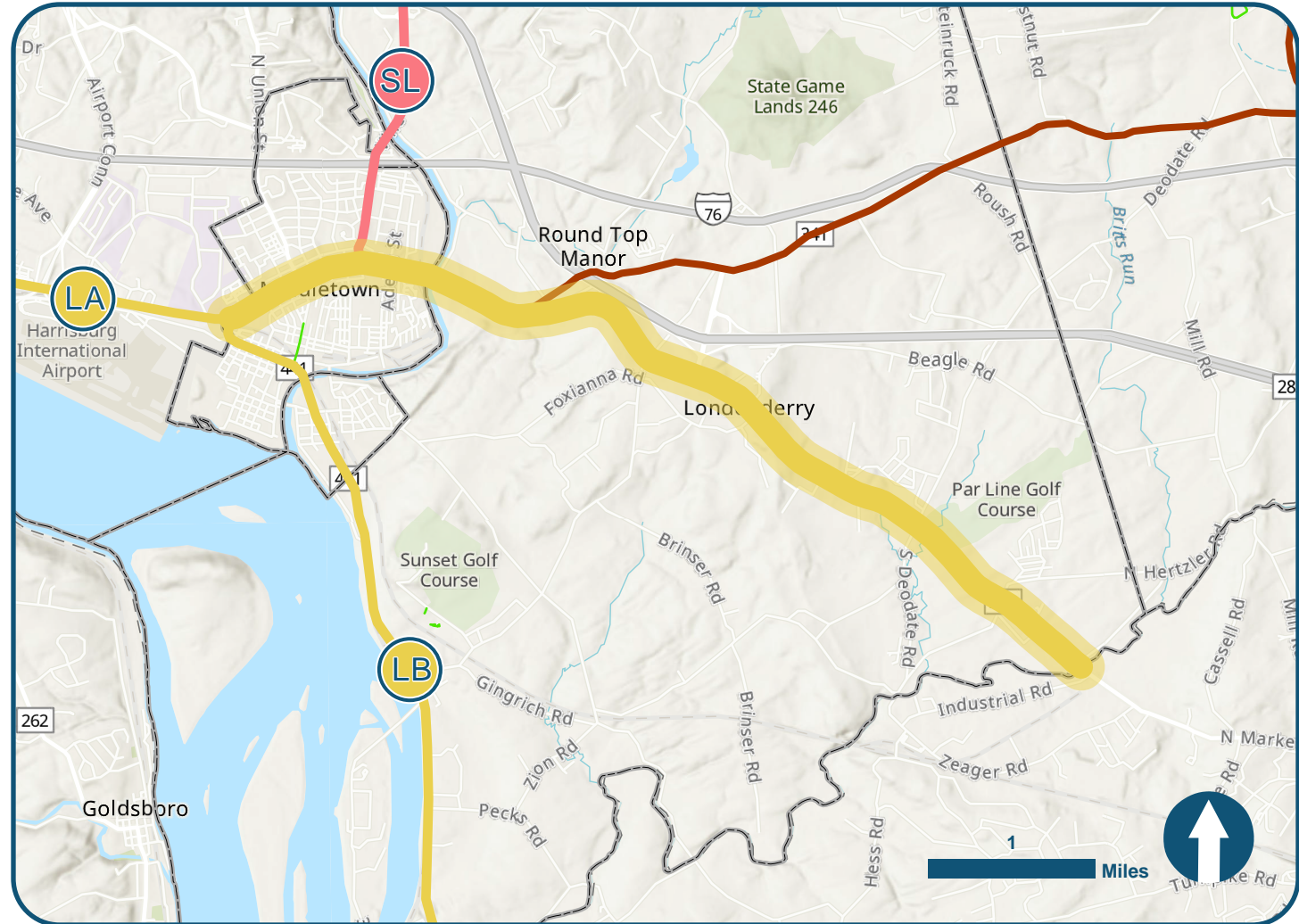
Providing a designated non-motorized transportation facility connecting Middletown Borough to Conewago Recreation Trail/Lebanon County Rail Trail

### Comments

Critical gap connecting major regional trail networks, enabling long distance non-motorized transportation; designated part of PA Bike Route J

### Legend

- Short Term Priorities
- Long Term Priorities
- Existing Minor Trails
- Existing Major Facilities
- In Development
- Proposed Off-road
- Proposed On-road



**Municipality:** Londonderry Township and Middletown Borough

**Location:** Harrisburg Pike/SR 230 from Middletown Borough to Dauphin County boundary

**Length:** 6.04 miles

**Non-motorized Crash History (2012-2022):** 22 total crashes (3 fatalities, 4 serious injuries)

**Relevant Studies:** PEC Trail Connectivity Assessment



### Transportation Need

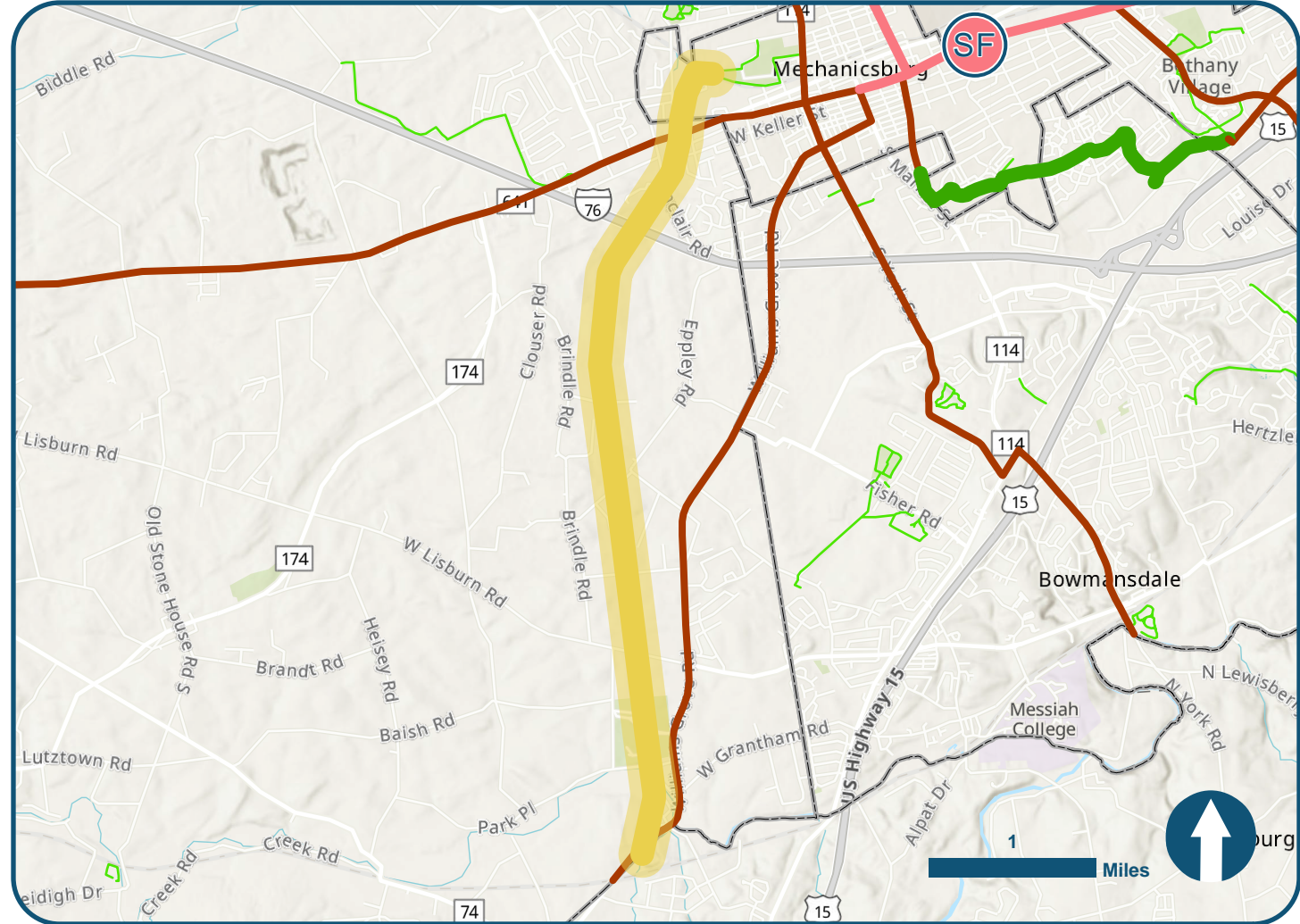
Connecting Mechanicsburg Borough to Dillsburg Borough (York County) with designated non-motorized transportation facility along abandoned rail bed

### Comments

Identified in South Mountain Trolley Greenway Feasibility Study; supported by South Mountain Partnership and Cumberland Valley Rails-to-Trails Council

### Legend

- Short Term Priorities
- Long Term Priorities
- Existing Minor Trails
- Existing Major Facilities
- In Development
- Proposed Off-road
- Proposed On-road



**Municipality:** Mechanicsburg Borough and Monroe Township

**Location:** Abandoned rail bed from Mechanicsburg Borough to Dillsburg Borough (York County)

**Length:** 4.94 miles

**Non-motorized Crash History (2012-2022):** 1 total crash

**Relevant Studies:** SMTG Feasibility Study, PEC Trail Connectivity Assessment





#### Transportation Need

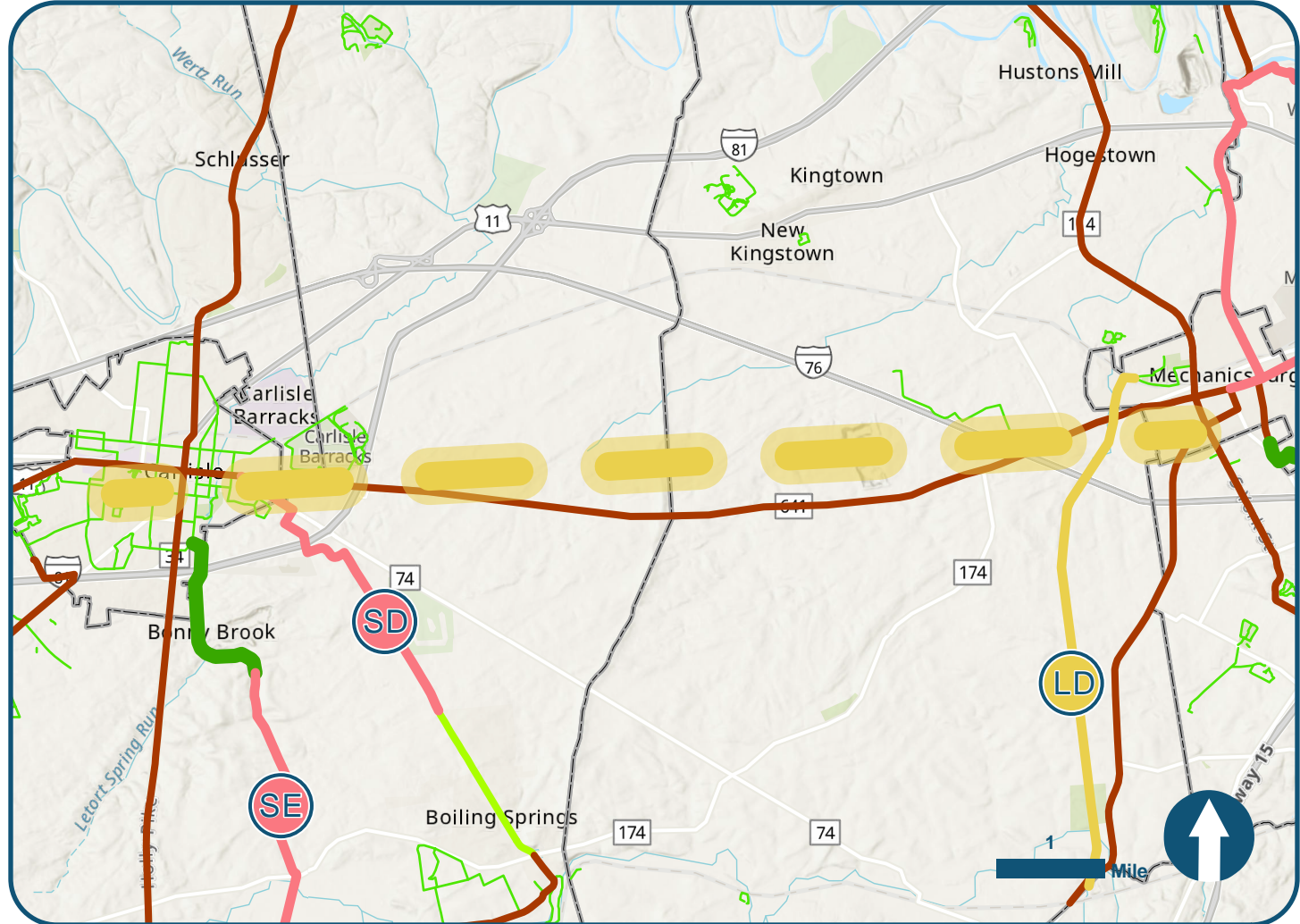
Establishing the route for an extension of the Cumberland County Rail Trail from Carlisle to Mechanicsburg, exact location/alignment to be determined

#### Comments

Important expansion of major regional trail system to provide eventual link to Harrisburg; potential route for 9/11 Memorial Trail and connection to Appalachian Trail and South Mountain Trolley Greenway

#### Legend

- Short Term Priorities
- Long Term Priorities
- Existing Minor Trails
- Existing Major Facilities
- Facilities In Development
- Proposed Off-road
- Proposed On-road



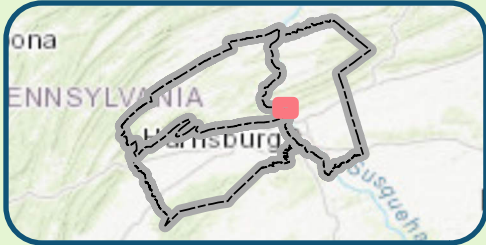
**Municipality:** Middlesex and Silver Spring Townships, Boroughs of Carlisle and Mechanicsburg

**Location:** Off-road connection between Carlisle and Mechanicsburg TBD

**Length:** 10 miles (approximately)

**Non-motorized Crash History (2012-2022):** n/a

**Relevant Studies:** n/a



### Transportation Need

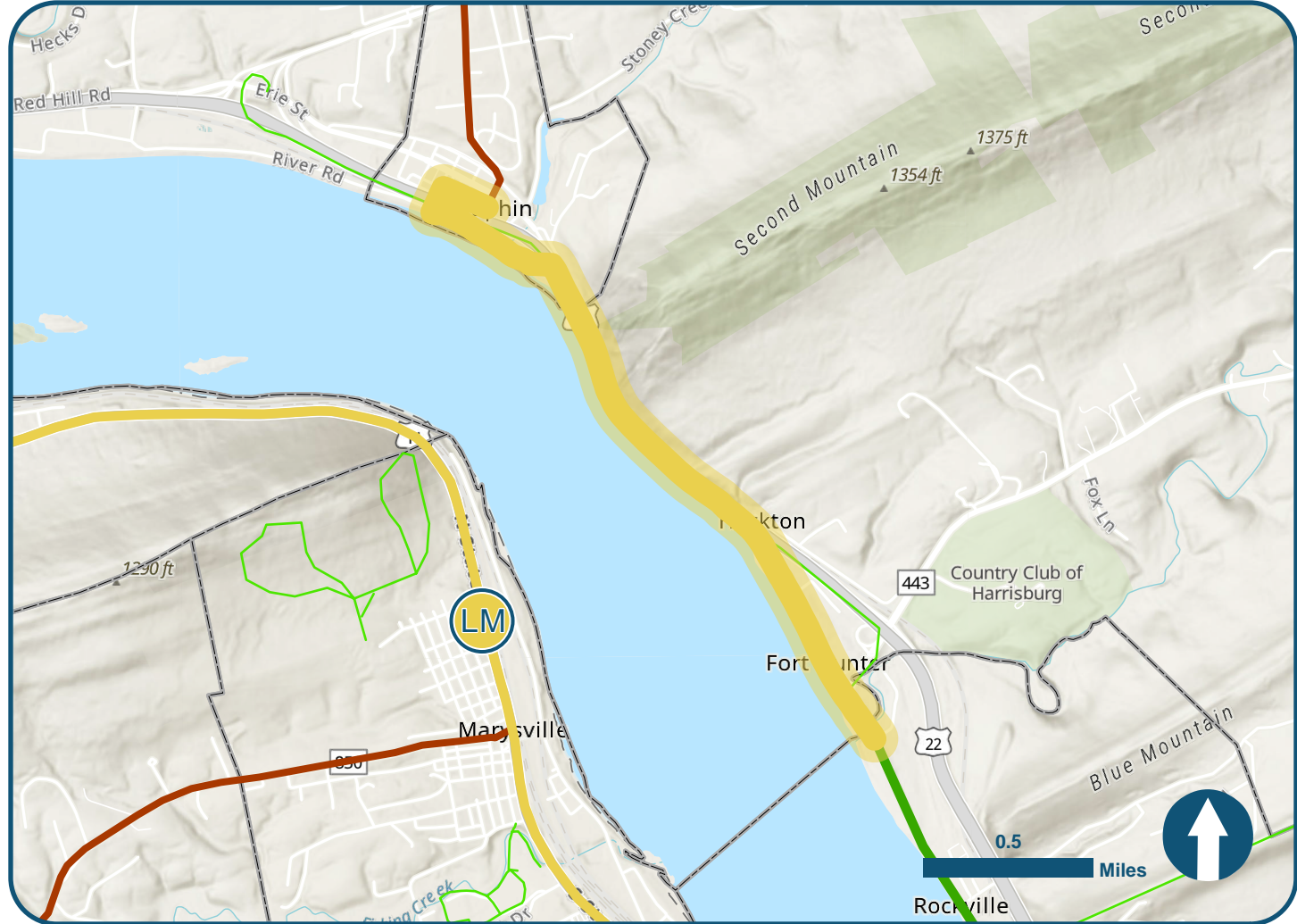
Providing a designated non-motorized transportation facility connecting Fort Hunter Park to Dauphin Borough

### Comments

Identified in designated safety/feasibility study; would establish connection to larger Capital Area Greenbelt into City of Harrisburg; railroad overpass presents significant issue

### Legend

- Short Term Priorities
- Long Term Priorities
- Existing Minor Trails
- Existing Major Facilities
- Facilities In Development
- Proposed Off-road
- Proposed On-road



**Municipality:** Middle Paxton and Susquehanna Townships, Dauphin Borough

**Location:** N Front Street and Route 22

**Length:** 2.33 miles

**Non-motorized Crash History (2012-2022):** n/a

**Relevant Studies:** SR322/22/Bike Route J Safety Conflicts Design Study





#### Transportation Need

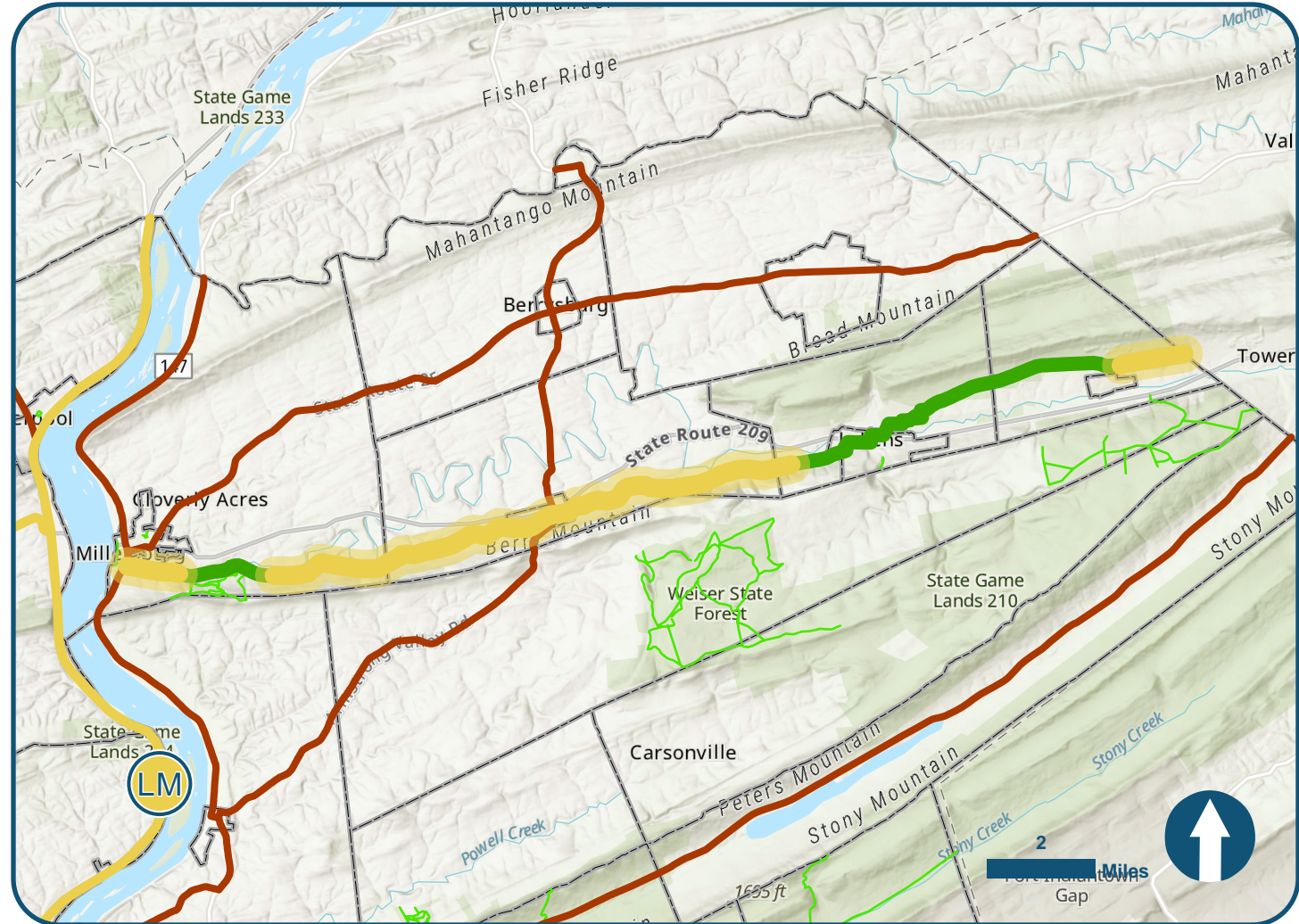
Completing the Lykens Valley Rail Trail, connecting Millersburg Borough and Williamstown Borough

#### Comments

Significant potential for eco-/agri-tourism and further regional connections via Millersburg Ferry; could provide additional connections for Plain Sect communities

#### Legend

- Short Term Priorities
- Long Term Priorities
- Existing Minor Trails
- Existing Major Facilities
- Facilities In Development
- Proposed Off-road
- Proposed On-road



**Municipality:** Upper Paxton and Washington Townships, Elizabethville and Millersburg Boroughs

**Location:** Abandoned rail bed connecting Millersburg to Williamstown

**Length:** 12.28 miles

**Non-motorized Crash History (2012-2022):** 1 total crash

**Relevant Studies:** n/a



### Transportation Need

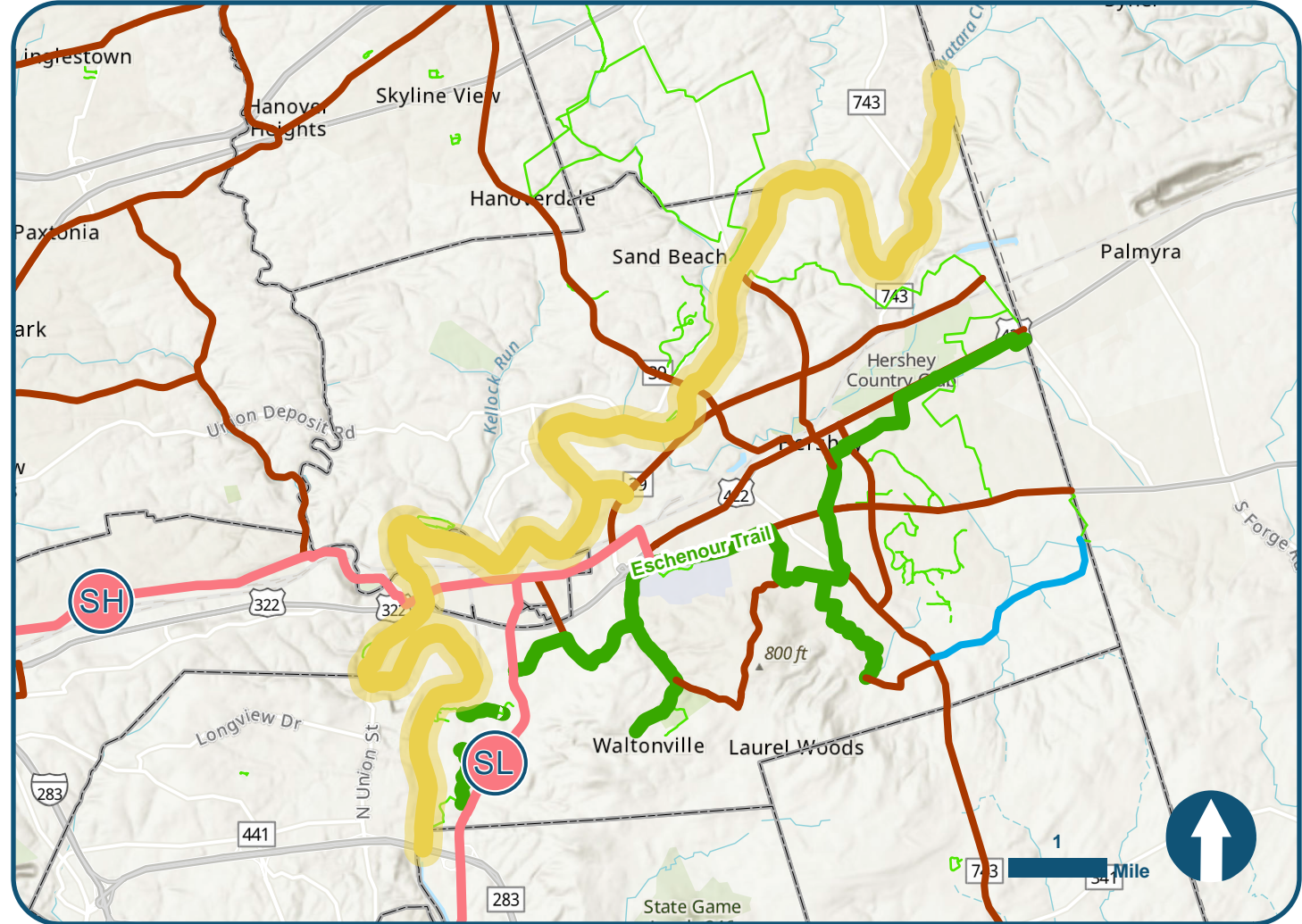
Providing a designated non-motorized transportation facility along the Swatara Creek, connecting numerous communities and neighborhoods in eastern Dauphin County

### Comments

Significant potential transportation and recreation benefits, connecting to other important regional trail networks

### Legend

- Short Term Priorities
- Long Term Priorities
- Existing Minor Trails
- Existing Major Facilities
- Facilities In Development
- Proposed Off-road
- Proposed On-road



**Municipality:** Lower Swatara, South Hanover, Derry, and East Hanover Townships

**Location:** Swatara Creek corridor through eastern Dauphin County

**Length:** 17.51 miles

**Non-motorized Crash History (2012-2022):** n/a

**Relevant Studies:** Regional Bicycle Connections Study





### Transportation Need

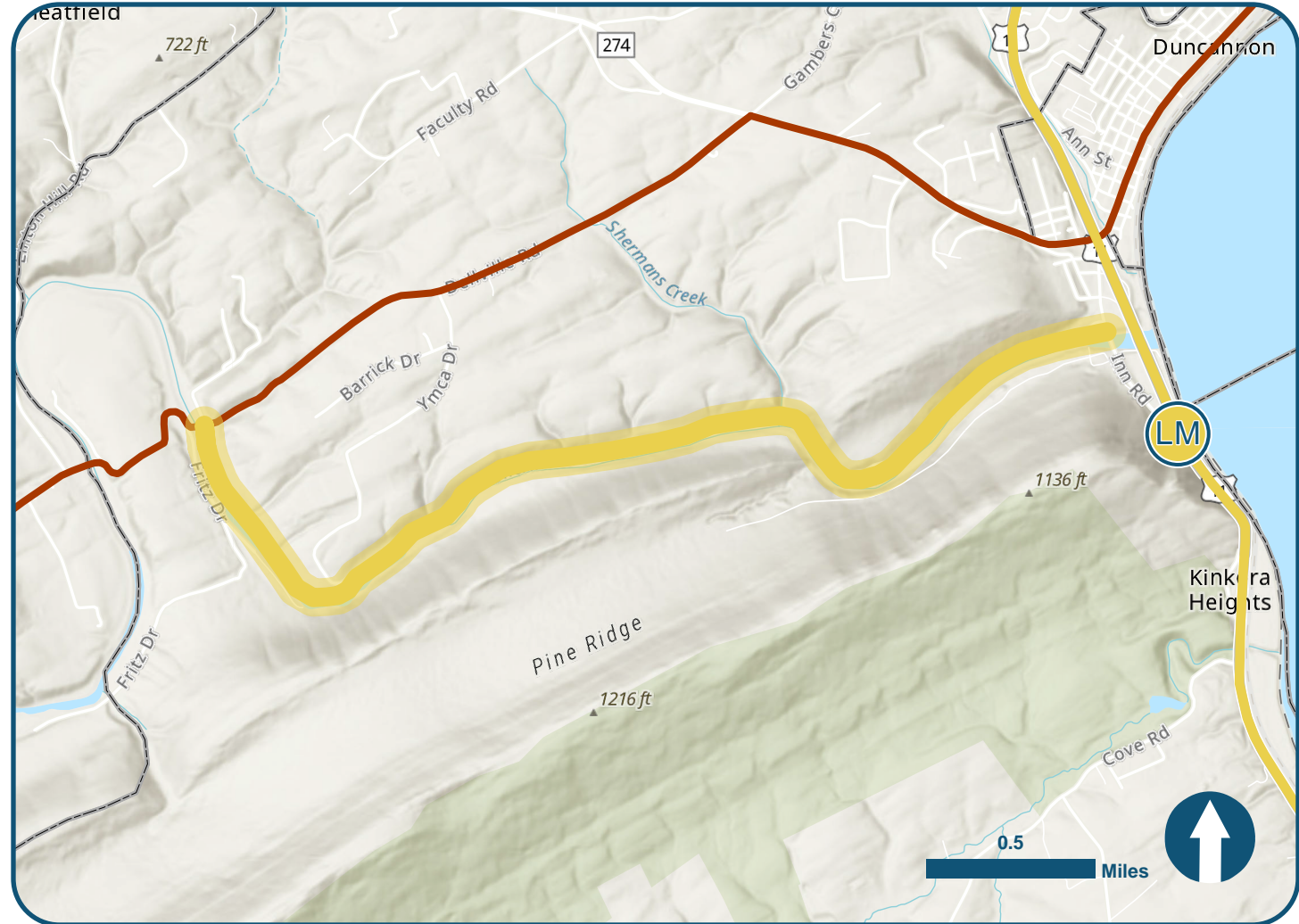
Providing a designated non-motorized transportation facility along Sherman's Creek, connecting Dellville Road and SR 11 near Duncannon Borough

### Comments

Significant recreation and eco-/argi-tourism potential; would provide additional connections to Appalachian Trail and PA Bike Route J

### Legend

- Short Term Priorities
- Long Term Priorities
- Existing Minor Trails
- Existing Major Facilities
- Facilities In Development
- Proposed Off-road
- Proposed On-road



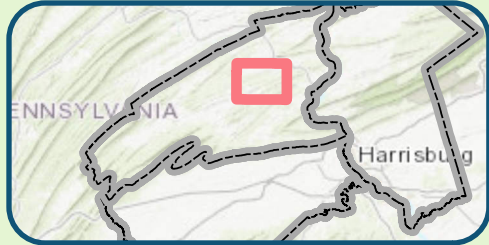
**Municipality:** Penn Township

**Location:** Sherman's Creek corridor in eastern Perry County

**Length:** 3.41 miles

**Non-motorized Crash History (2012-2022):** n/a

**Relevant Studies:** n/a



### Transportation Need

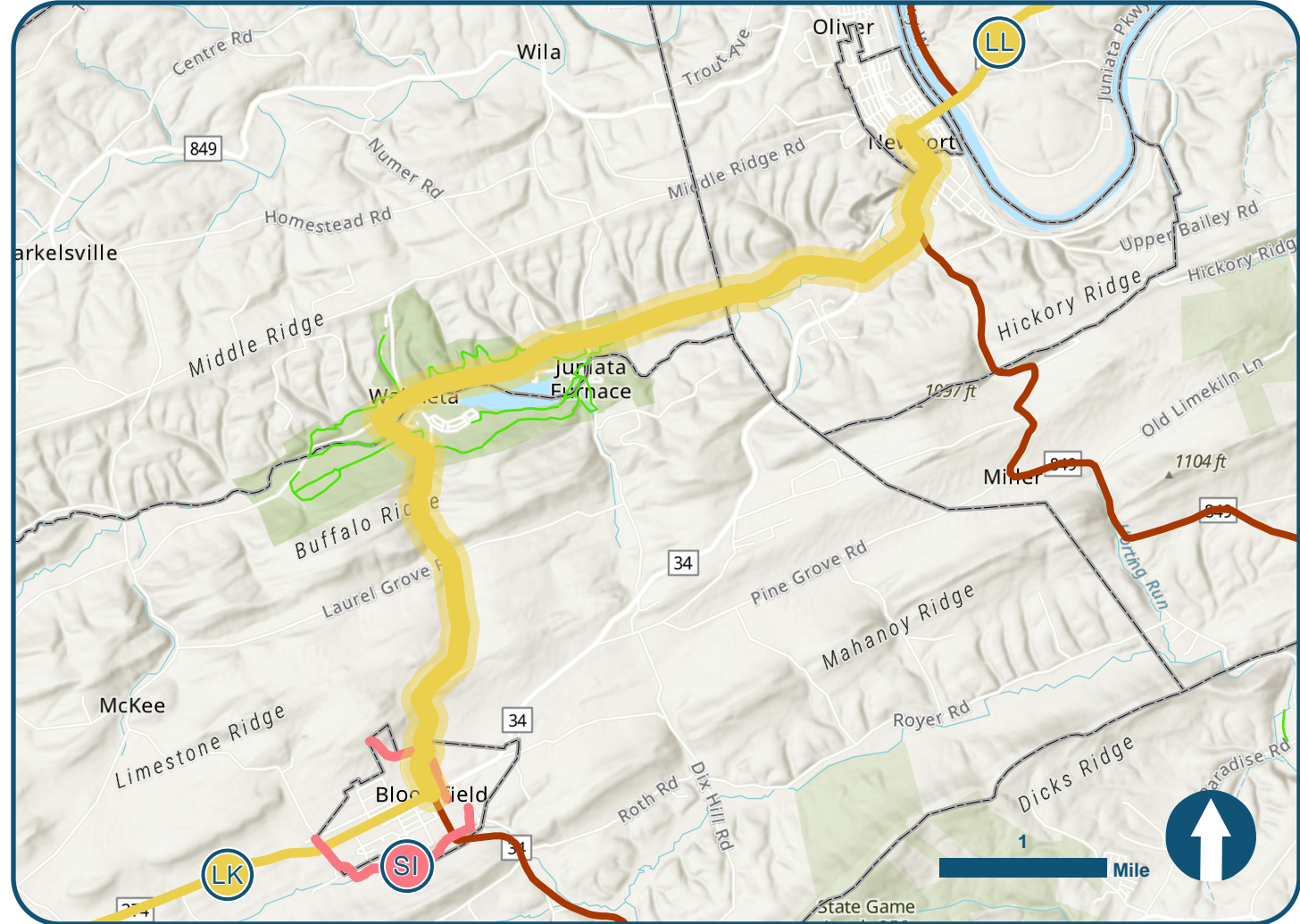
Improving non-motorized transportation accessibility to Little Buffalo State Park from Bloomfield and Newport Borough through a combination of on- and off-road facilities

### Comments

Geographic constraints and lack of extensive local road network limit opportunities for alternate routes and accommodations

### Legend

- Short Term Priorities
- Long Term Priorities
- Existing Minor Trails
- Existing Major Facilities
- Facilities In Development
- Proposed Off-road
- Proposed On-road



**Municipality:** Bloomfield and Newport Boroughs, and Juniata, Centre, and Oliver Townships

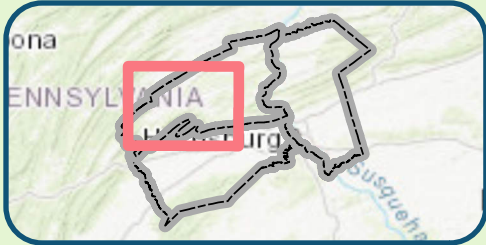
**Location:** Off-road trail from Bloomfield to Newport

**Length:** 6.82 miles

**Non-motorized Crash History (2012-2022):** 2 total crashes (1 serious injury)

**Relevant Studies:** n/a





### Transportation Need

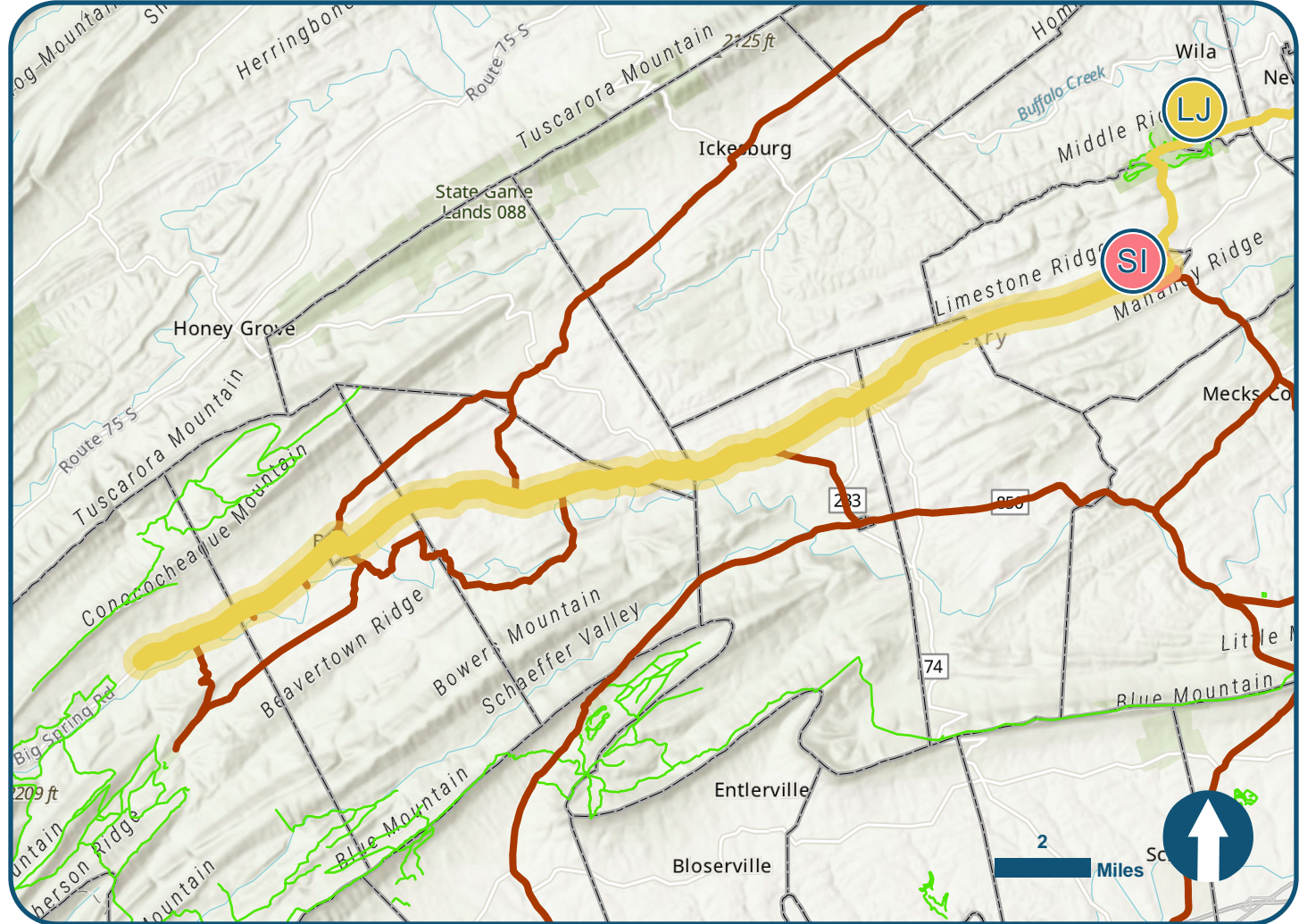
Improving non-motorized transportation connection between Tuscarora State Forest and Bloomfield Borough along SR 274

### Comments

Significant potential for eco-/agri-tourism and regional connections; important route for region's Plain Sect communities

### Legend

- Short Term Priorities
- Long Term Priorities
- Existing Minor Trails
- Existing Major Facilities
- Facilities In Development
- Proposed Off-road
- Proposed On-road



**Municipality:** Toboyne, Jackson, Southwest Madison, Tyrone, Spring and Centre Townships

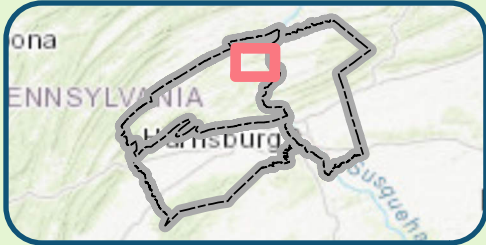
**Location:** Along SR 274 from Tuscarora State Forest to Bloomfield Borough

**Length:** 23.88 miles

**Non-motorized Crash History (2012-2022):** 4 total crashes

**Relevant Studies:** n/a





### Transportation Need

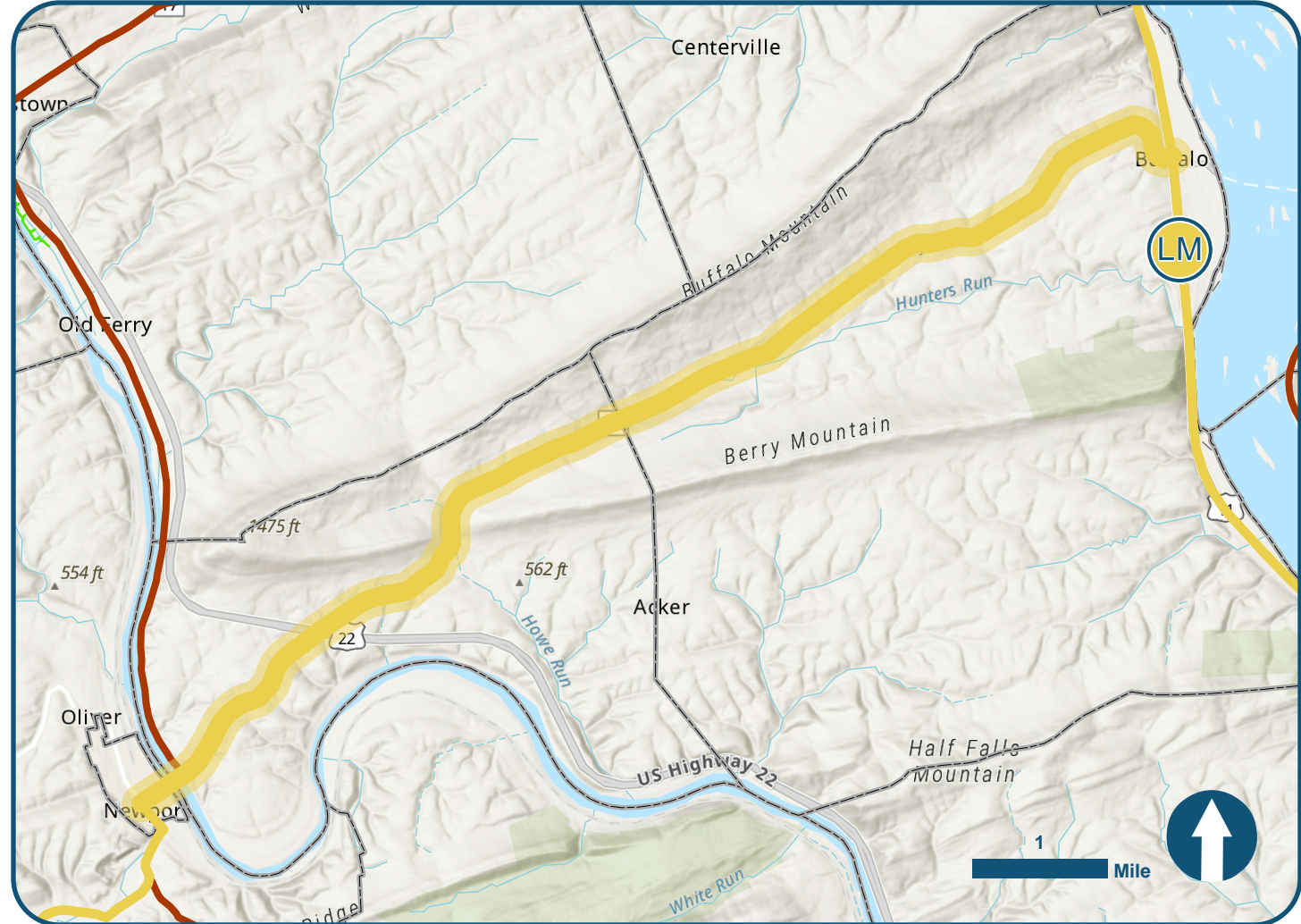
Improving non-motorized transportation connection between Newport Borough and SR 11, along SR 34; establishing an east-west route through eastern Perry County

### Comments

Significant potential for eco-/agri-tourism and regional connections; connects to PA Bike Route J

### Legend

- Short Term Priorities
- Long Term Priorities
- Existing Minor Trails
- Existing Major Facilities
- Facilities In Development
- Proposed Off-road
- Proposed On-road



**Municipality:** Hope and Buffalo Townships, and Newport Borough

**Location:** SR 34 from Newport Borough to SR 11

**Length:** 9.67 miles

**Non-motorized Crash History (2012-2022):** 3 total crashes (1 serious injury)

**Relevant Studies:** n/a





#### Transportation Need

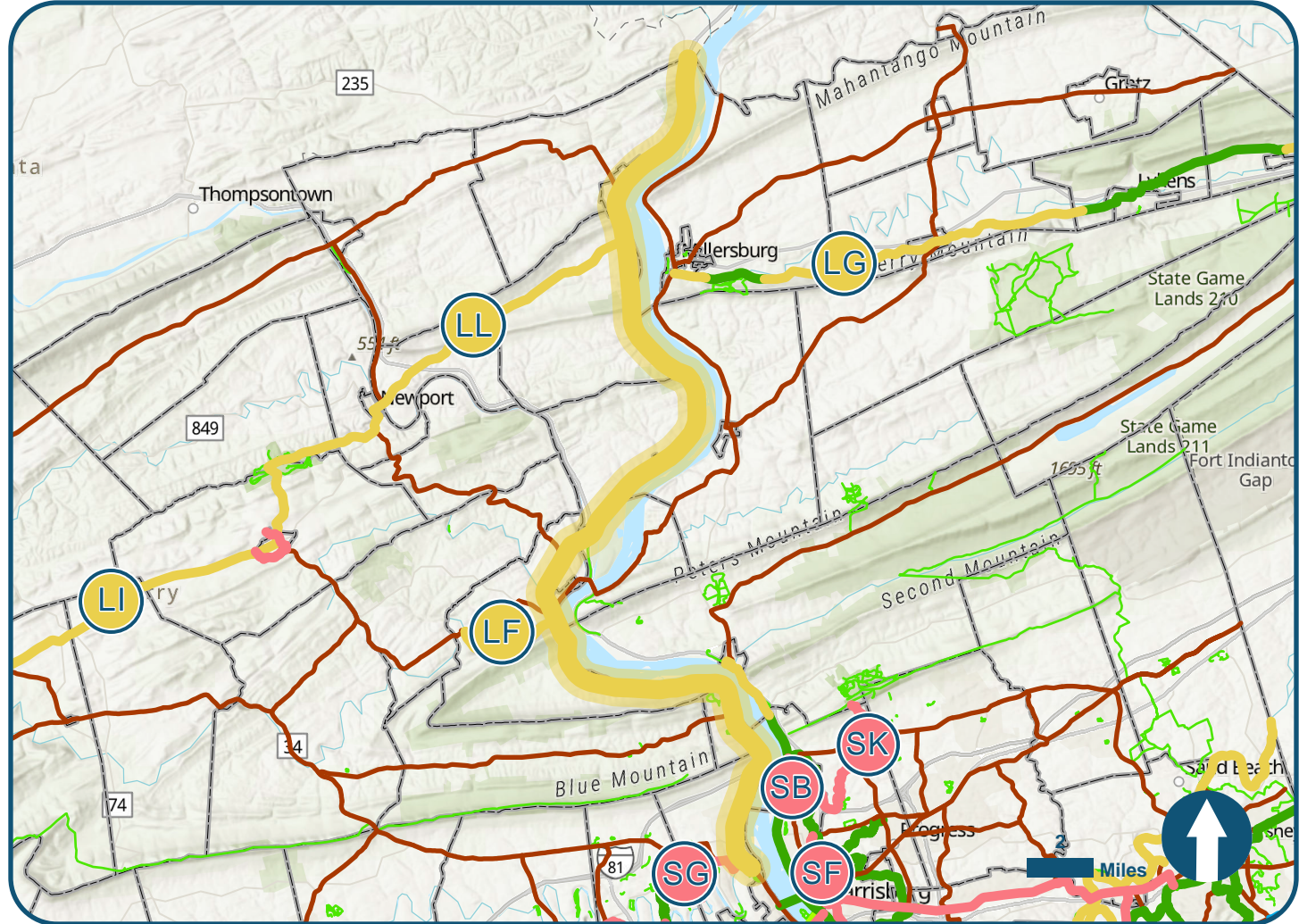
Improving non-motorized transportation connection along SR 11/15/PA Bike Route J from the Perry County Boundary to Enola

#### Comments

PennDOT designated route for long-distance cycling with significant potential for eco-/agri-tourism; important connection for regional non-motorized transportation

#### Legend

- Short Term Priorities
- Long Term Priorities
- Existing Minor Trails
- Existing Major Facilities
- Facilities In Development
- Proposed Off-road
- Proposed On-road



**Municipality:** Watts, Buffalo, East Pennsboro, Penn, and Liverpool Townships

**Location:** SR 11/PA Bike Route J along Susquehanna River in Perry County

**Length:** 33.02 miles

**Non-motorized Crash History (2012-2022):** 12 total crashes (1 fatality, 4 serious injuries)

**Relevant Studies:** n/a