

TRI-COUNTY REGIONAL PLANNING COMMISSION

2008 REGIONAL BUILDING ACTIVITY REPORT

Previously, annual building activity was gathered and reported separately for each county in the Tri-County Region. In an attempt to provide an analytical tool for the region and meet the objectives of its adopted Strategic Plan, the Tri-County Regional Planning Commission is publishing this 2008 Regional Building Activity Report.

This consolidated report focuses on building permit activity for residential, commercial and industrial development in all three counties. The information is shown in easily comparable tables, graphs and text. Subdivision and Land Development plat data is also included for the purpose of identifying potential development activity in relationship to Planned Growth Areas (PGAs).

Please contact Janine Park, (jpark@tcrpc-pa.org) or call, 717-234-2639 should you have suggestions of additional information to be included in future editions of the report.

SPECIAL POINTS OF INTEREST

- From 1987 through 2008 building permits for 59,382 dwelling units (including 32,561 single-family homes) were issued in Cumberland, Dauphin & Perry Counties.
- From 1987 through 2008 building permits for 3,404 commercial establishments were issued in Cumberland, Dauphin and Perry Counties.
- From 1987 through 2008 building permits for 365 industrial establishments were issued in Cumberland, Dauphin and Perry Counties.
- All figures in this report are based on municipalities that responded to annual building permit surveys. In 2008, 8 out of 30 Perry County municipalities did not respond to the survey.

INSIDE THIS REPORT

Tri-County Regional Planning Commission 2008 Membership	2
Cumberland County Planning Commission 2008 Membership	3
Dauphin County Planning Commission 2008 Membership	3
Perry County Planning Commission 2008 Membership	3
Cumberland County 2008 Building Permit Data	4
Dauphin County 2008 Building Permit Data	14
Perry County 2008 Building Permit Data	24
Cumberland, Dauphin, & Perry County Comparison	34
Development in Planned Growth Areas (PGAs)	41
Cumberland County Population Estimates	45
Dauphin County Population Estimates	46
Perry County Population Estimates	47
TCRPC Staff	48

Between 1987 And 2008 Building Permits Were Issued For 32,561 Single-Family Homes in Cumberland, Dauphin & Perry Counties.

**Tri-County Regional Planning Commission
2008 Membership**

Chair: Jackie Eakin (Cumberland County Planning Commission)

Vice Chair: James Turner (Perry County Planning Commission)

Secretary: William Forrey (Cumberland County Planning Commission)

Treasurer: Paul D. Clark (Dauphin County Planning Commission)

Cumberland County Board of Commissioners	Gary Eichelberger
Dauphin County Board of Commissioners	Dominic D. DiFrancesco II (Skip Memmi, Alternate Appointee)
Perry County Board of Commissioners	Stephen C. Naylor
Cumberland County Planning Commission	Allan R. Williams
Cumberland County Planning Commission	Bud Brown
Dauphin County Planning Commission	John Kerschner
Dauphin County Planning Commission	Gary Lenker
Dauphin County Planning Commission	Edward Carney
Perry County Planning Commission	Wendy M. Brunner
Perry County Planning Commission	Thomas A. Graupensperger
Perry County Planning Commission	Robert E. Shaffer, Sr.
Cumberland County Member-at-Large	Vacant
Dauphin County Member-at-Large	Fred Lighty
Perry County Member-at-Large	Richard E. Stees
Cumberland East Plan Development Section	Dan Flint
Cumberland East Plan Development Section	Scot Wyland
Cumberland Central Plan Development Section	Brian P. O'Neill
Cumberland West Plan Development Section	John Epley (resigned 9/8/08)
Dauphin Southeast Plan Development Section	Mike Pries
Dauphin Southwest Plan Development Section	Frank Linn
Dauphin Southwest Plan Development Section	William Hawk
Dauphin North Plan Development Section	James Bullock
Perry Northeast Plan Development Section	Robert Sharar
Perry West Plan Development Section	John Stokes
Perry Southeast Plan Development Section	Robert Rhoades
Harrisburg City Plan Development Section	Kathy Possinger
Harrisburg City Plan Development Section	Daniel C. Leppo

**2008 Cumberland County
Board of Commissioners**

Gary Eichelberger, Chair
Richard L. Rovegno
Barbara Cross

**2008 Dauphin County
Board of Commissioners**

Jeffery T. Haste, Chair
George P. Hartwick III
Dominic D. DiFrancesco II

**2008 Perry County
Board of Commissioners**

John J. Amsler, Chair
Warren R. Van Buskirk
Stephen C. Naylor

Cumberland County Planning Commission

2008 Membership

Jackie Eakin, Chairman
William Forrey, Vice-Chairman
Allan Williams, Secretary
Bud Brown
Deb Ealer
Ron Glesner
Rajesh Jain
Chris Knarr
Bruce Rosendale

Dauphin County Planning Commission

2008 Membership

Daniel R. Tunnell, Chairman
Thomas Clark, Vice-Chairman
Pete Sedesse, Secretary
Gary Lenker, Treasurer
Edward Carney
Paul D. Clark
John A. Kerschner
Keith Oellig
Tom Shaffer
Dominic DiFrancesco II, County Commissioner
(Liaison County Commissioner)
August "Skip" Memmi
(Commissioners' Alternate)

Perry County Planning Commission

2008 Membership

James H. Turner, Chairman
Wendy Brunner, Vice-Chairman
Robert E. Shaffer Sr., Secretary
David Holcombe, Treasurer
Thomas A. Graupensperger
Logan Bower
Terry Meek
Nathan Mohler
(Resigned 12/08)
David F. Rice

CUMBERLAND COUNTY

Table C-1: 2008 New Dwelling Units / Commercial / Industrial / Public Facility Establishments	Page 5
Table C-2: Dwelling Units by Type (1987-2008)	Page 6
Table C-3: Total New Dwelling Units (1999-2008)	Page 7
Chart C-1: Total New Dwelling Units (1987-2008)	Page 8
Table C-4: New Residential Construction Costs (2008)	Page 9
Table C-5: Commercial, Industrial & Public Facility Construction Costs (2008)	Page 10
Table C-6: New Commercial Establishments (1999-2008)	Page 11
Table C-7: New Industrial Establishments (1999-2008)	Page 12
Table C-8: Commercial & Industrial Estimated Construction Costs (1999-2008)	Page 13
Chart C-2: Number of Permits for New Commercial & Industrial Establishments (1999-2008)	Page 13

In 2008 residential building permit activity in Cumberland County was dominated by permits for single-family homes (511), followed by permits for 395 townhouses. The top three municipalities issuing building permits for single-family homes were: Silver Spring Township (146); Hampden Township (83); and Southhampton Township (44).

In 2008 building permits for 41 new commercial establishments were issued. The municipality issuing permits for the most commercial establishments was South Middleton Township (12).

In 2008 building permits for 7 new industrial establishments were issued. Those permits were issued in: Silver Spring Township (3); Penn Township (2) and one new establishment in Carlisle Borough and North Newton Township.

TABLE C-1
NEW DWELLING UNITS / COMMERCIAL / INDUSTRIAL / PUBLIC FACILITY ESTABLISHMENTS
 (based on issued building permits)
CUMBERLAND COUNTY
2008

Municipality	Single Family	Semi-Detached	Multi-Family Apartments	Townhouses	Mobile Homes	Apartment Conversions	Total New Residential Units	Dwellings Demolished	Net Total New Residential Units	Rehab Housing	New Commercial Estabs.	New Industrial Estabs.	New Public Facility
Camp Hill Boro.	6	0	6	19	0	0	31	0	31	0	0	0	0
Carlisle Boro.	9	8	33	32	0	0	82	2	80	0	1	1	0
Cooke Twp.	0	0	0	0	0	0	0	0	0	0	0	0	0
Dickinson Twp.	14	0	0	0	1	0	15	2	13	0	0	0	0
East Pennsboro Twp.	19	0	0	21	0	0	40	5	35	0	1	0	0
Hampden Twp.	83	0	0	92	13	0	188	13	175	0	4	0	0
Hopewell Twp.	4	0	0	0	5	0	9	0	9	0	0	0	0
Lemoine Boro.	0	4	0	16	0	0	20	0	20	0	0	0	0
Lower Allen Twp.	34	0	0	0	0	0	34	0	34	0	1	0	0
Lower Frankford Twp.	2	0	0	0	0	0	2	1	1	0	0	0	0
Lower Mifflin Twp.	2	0	0	0	4	0	6	0	6	0	0	0	0
Mechanicsburg Boro.	2	0	0	0	0	0	2	1	1	2	1	0	0
Middlesex Twp.	7	0	0	36	1	0	44	6	38	0	1	0	0
Monroe Twp.	18	0	0	0	0	0	18	2	16	0	0	0	0
Mt. Holly Springs Boro.	0	0	0	0	0	6	6	1	5	0	0	0	0
Newburg Boro.	0	0	0	0	0	0	0	0	0	0	0	0	0
New Cumberland Boro.	3	0	0	0	0	0	3	0	3	0	0	0	0
Newville Boro.	0	0	0	0	0	0	0	0	0	3	0	0	0
North Middletown Twp.	20	4	0	5	14	0	43	10	33	0	0	0	0
North Newton Twp.	11	0	0	0	0	0	11	0	11	0	0	1	0
Penn Twp.	9	0	0	0	3	0	12	0	12	0	0	2	2
Shippensburg Boro.	1	2	0	0	0	0	3	5	-2	0	0	0	0
Shippensburg Twp.	0	0	108	2	2	0	112	0	112	2	1	0	0
Shiremanstown Boro.	0	0	0	0	0	0	0	0	0	0	0	0	0
Silver Spring Twp.	146	6	0	51	0	0	203	2	201	0	9	3	1
South Middleton Twp.	36	0	0	28	2	0	66	8	58	0	12	0	0
South Newton Twp.	2	0	0	0	1	0	3	0	3	0	0	0	0
Southampton Twp.	44	0	96	6	4	0	150	0	152	0	4	0	0
Upper Allen Twp.	26	0	11	87	0	0	124	5	119	0	4	0	0
Upper Frankford Twp.	2	0	0	0	8	0	10	0	10	0	0	0	0
Upper Mifflin Twp.	3	0	0	0	0	0	3	0	3	0	0	0	0
West Pennsboro Twp.	8	2	0	0	6	0	16	0	16	1	1	0	1
Wormleysburg Boro.	0	0	6	0	0	1	7	2	6	3	1	0	0
COUNTY TOTAL	511	26	260	395	64	7	1,263	65	1,201	11	41	7	4

TABLE C-2
DWELLING UNITS BY TYPE
(based on issued building permits)
CUMBERLAND COUNTY
1987 - 2008

Year	Single Family	Semi-Detached	Apartments	Townhouses	Mobile Homes	Apartment Conversions	TOTAL
1987	909	12	187	272	125	21	1,526
1988	899	22	200	299	139	13	1,572
1989	826	42	105	226	81	17	1,297
1990	785	24	259	404	93	11	1,576
1991	662	26	173	162	98	9	1,130
1992	792	45	29	180	86	8	1,140
1993	860	10	60	182	91	18	1,221
1994	729	4	8	257	70	2	1,070
1995	602	14	28	193	62	3	902
1996	671	12	120	247	59	4	1,113
1997	607	16	171	495	94	9	1,392
1998	716	14	79	373	95	5	1,282
1999	768	26	79	439	104	10	1,426
2000	592	58	64	294	83	7	1,098
2001	705	26	0	330	63	5	1,129
2002	834	30	321	375	72	12	1,644
2003	875	42	191	366	84	3	1,561
2004	892	44	9	361	82	5	1,393
2005	877	153	85	270	104	0	1,489
2006	727	128	53	289	113	11	1,321
2007	600	64	252	582	68	4	1,570
2008	511	28	260	395	64	8	1,266
TOTAL	16,439	840	2,733	6,991	1,930	185	29,118

*Based on municipalities which responded to Annual Building Permit Survey

From 1987 to 2008 Single-Family dwelling units outpaced other styles of housing for which building permits were issued. The 22 year total of building permits for the Single-Family dwellings constituted 56.5 % of the total dwelling units for which building permits were issued. Semi-Detached units constituted 2.9%; Apartments 9.4%; Townhouses 24.0%; Mobile Homes 6.6%; and Apartment Conversions 0.6%.

TABLE C-3
TOTAL NEW DWELLING UNITS**
(based on issued building permits)
CUMBERLAND COUNTY
1999-2008

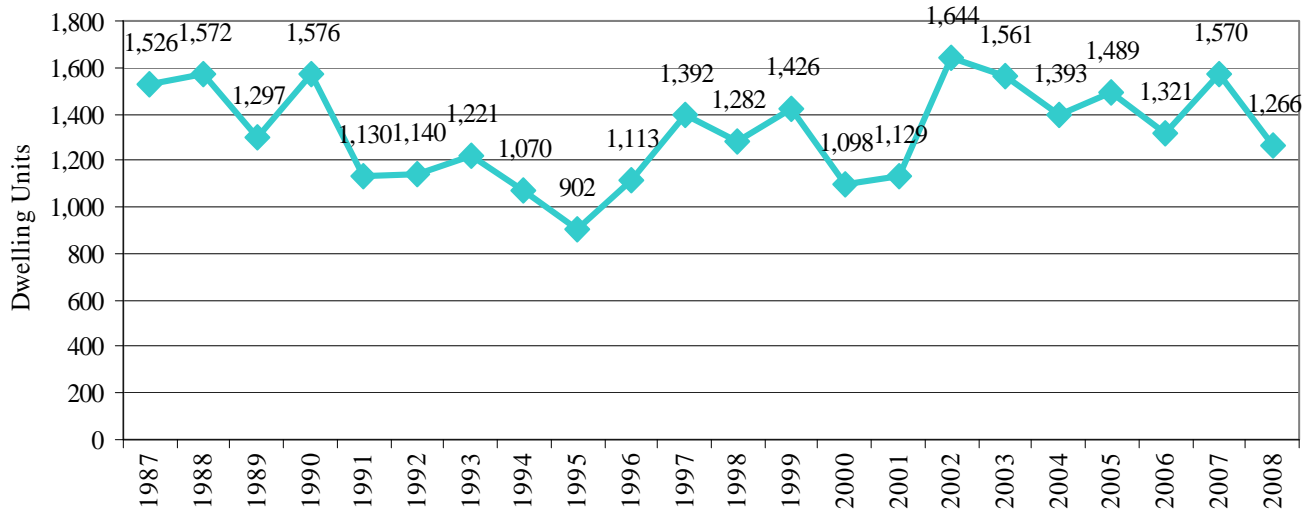
Municipality	1999	2000	2001	2002	2003	2004	2005	2006	2007	2008	Total
Camp Hill Boro.	*	7	1	3	3	1	1	3	17	31	67
Carlisle Boro.	106	29	35	54	60	128	53	65	26	82	638
Cooke Twp.	1	8	1	3	5	4	3	0	1	0	26
Dickinson Twp.	46	35	42	42	45	59	40	41	18	15	383
East Pennsboro Twp.	146	130	159	197	205	118	65	77	51	40	1,188
Hampden Twp.	349	170	164	192	197	229	288	241	253	188	2,271
Hopewell Twp.	18	8	*	8	*	9	7	6	10	9	75
Lemoyne Boro.	6	8	13	15	*	8	14	2	14	20	100
Lower Allen Twp.	15	19	29	323	42	32	31	36	78	34	639
Lower Frankford Twp	6	5	4	5	4	4	6	6	7	2	49
Lower Mifflin Twp.	10	*	13	21	21	8	12	13	9	6	113
Mechanicsburg Boro.	12	3	6	2	3	12	3	8	1	2	52
Middlesex Twp.	25	13	21	19	23	35	29	47	57	44	313
Monroe Twp.	42	31	31	23	28	21	27	21	16	18	258
Mt. Holly Springs Boro.	8	3	5	5	2	3	3	6	5	6	46
Newburg Boro.	1	0	0	0	0	0	0	2	2	0	5
New Cumberland Boro.	1	1	2	3	0	18	0	0	7	3	35
Newville Boro.	4	0	0	0	0	2	0	0	1	0	7
North Middletown Twp.	38	26	39	58	78	96	138	134	75	43	725
North Newton Twp.	12	18	10	15	11	16	21	12	16	11	142
Penn Twp.	17	22	20	20	12	12	28	22	10	12	175
Shippensburg Boro.	2	32	19	6	10	11	4	11	13	3	111
Shippensburg Twp.	0	0	29	2	57	5	7	6	194	112	412
Shiremanstown Boro.	0	1	1	1	2	1	1	2	1	0	10
Silver Spring Twp.	187	202	129	177	261	162	125	101	151	203	1,698
South Middleton Twp.	113	125	96	118	154	99	119	114	112	66	1,116
South Newton Twp.	7	*	4	5	4	5	1	8	2	3	39
Southampton Twp.	83	64	56	73	94	117	101	102	199	152	1,041
Upper Allen Twp.	104	95	153	208	188	119	263	164	184	124	1,602
Upper Frankford Twp.	14	11	9	12	15	23	29	36	13	10	172
Upper Mifflin Twp	7	9	14	8	6	9	7	3	8	3	74
West Pennsboro Twp	46	23	24	25	31	27	62	31	19	16	304
Wormleysburg Boro.	0	0	0	1	0	0	1	1	0	8	11
COUNTY TOTAL	1,426	1,098	1,129	1,644	1,561	1,393	1,489	1,321	1,570	1,266	13,897

* No response to survey.

** Does not include rehabilitated dwelling units.

The number of building permits issued for residential uses fluctuated from 1999 to 2008. The highest number of permits issued was in 2002 (1,644). The lowest number was in 2000 (1,098). A graph showing trends from 1987 to 2008 is on Page 8. A table and graph illustrating a comparison of Cumberland, Dauphin and Perry Counties residential building permit activity from 1987 to 2008 are on Page 35 and Page 36, respectively.

CHART C-1
TOTAL NEW DWELLING UNITS
(based on issued building permits)
CUMBERLAND COUNTY
1987-2008



From 1987 through 2008 building permits were issued for a total of 29,118 dwelling units in Cumberland County (see Table C-D-P 1 on Page 35). Building permits for the least number of dwelling units (902) were issued in 1995. Building permits for the highest number of dwelling units (1,644) were issued in 2002.

Within this same 22 year period, in Dauphin County building permits for 24,801 dwelling units were issued (Page 35). Building permits for the least number of dwelling units in Dauphin County (592) were issued in 2008. Building permits for the highest number (1,619) in Dauphin County were issued in 1987.

For the years 1987 through 2008 in Perry County building permits for 5,463 dwelling units were issued (Page 35). Building permits for the least number of dwelling units in Perry County (73) were issued in 2007. Building permits for the highest number (376) were issued in 1987. [Note: In some years not all municipal building permit surveys were returned].

Building Permits Issued for All Types of Dwelling Units
1987-2008

Cumberland County: 29,118
Dauphin County: 24,801
Perry County: 5,463

Municipality		Single-Family		Semi-Detached		Apartments		Townhouses		Mobile Homes*		Apartment Conversions		Rehab Housing		Total New Residential Construction Costs	
		Total Cost	Ave. Cost	Total Cost	Ave. Cost	Total Cost	Ave. Cost	Total Cost	Ave. Cost	Total Cost	Ave. Cost	Total Cost	Ave. Cost	Total Cost	Ave. Cost	Total Cost	Ave. Cost
Camp Hill Boro.		\$1,448,000	\$24,133	\$0	\$0	\$650,000	\$108,333	\$2,660,000	\$140,000	\$0	\$0	\$0	\$0	\$0	\$0	\$0	\$4,788,000
Carlisle Boro.		\$2,146,165	\$238,462	\$704,000	\$88,000	\$2,252,200	\$68,248	\$2,454,724	\$76,710	\$0	\$0	\$0	\$0	\$0	\$0	\$0	\$7,557,089
Cooke Twp.		\$0	\$0	\$0	\$0	\$0	\$0	\$0	\$0	\$0	\$0	\$0	\$0	\$0	\$0	\$0	\$0
Dickinson Twp.		\$4,429,503	\$3,16,393	\$0	\$0	\$0	\$0	\$0	\$0	\$43,000	\$43,000	\$0	\$0	\$0	\$0	\$0	\$4,472,503
East Pennsboro Twp.		\$4,533,371	\$238,598	\$0	\$0	\$0	\$0	\$2,050,000	\$97,619	\$0	\$0	\$0	\$0	\$0	\$0	\$0	\$6,583,371
Hamden Twp.		\$24,678,550	\$297,332	\$0	\$0	\$0	\$0	\$14,630,415	\$19,026	\$578,052	\$44,466	\$0	\$0	\$0	\$0	\$0	\$39,886,997
Hopewell Twp.		\$782,000	\$195,500	\$0	\$0	\$0	\$0	\$0	\$0	\$651,000	\$130,200	\$0	\$0	\$0	\$0	\$0	\$1,433,000
Lemoyne Boro.		\$0	\$0	\$379,248	\$94,812	\$0	\$0	\$1,632,000	\$102,000	\$0	\$0	\$0	\$0	\$0	\$0	\$0	\$2,011,248
Lower Allen Twp.		\$7,224,869	\$212,496	\$0	\$0	\$0	\$0	\$0	\$0	\$0	\$0	\$0	\$0	\$0	\$0	\$0	\$7,224,869
Lower Frankford Twp.		\$445,000	\$22,500	\$0	\$0	\$0	\$0	\$0	\$0	\$0	\$0	\$0	\$0	\$0	\$0	\$0	\$445,000
Lower Mifflin Twp.		\$350,000	\$175,000	\$0	\$0	\$0	\$0	\$0	\$0	\$200,000	\$50,000	\$0	\$0	\$0	\$0	\$0	\$550,000
Mechanicsburg Boro.		\$325,000	\$162,500	\$0	\$0	\$0	\$0	\$0	\$0	\$0	\$0	\$0	\$0	\$0	\$0	\$0	\$420,000
Middlesex Twp.		\$2,640,241	\$377,177	\$0	\$0	\$0	\$0	\$2,700,000	\$75,000	\$6,370	\$6,370	\$0	\$0	\$0	\$0	\$0	\$5,346,611
Monroe Twp.		\$4,235,000	\$235,278	\$0	\$0	\$0	\$0	\$0	\$0	\$0	\$0	\$0	\$0	\$0	\$0	\$0	\$4,235,000
Mt. Holly Springs Boro.		\$0	\$0	\$0	\$0	\$0	\$0	\$0	\$0	\$0	\$0	\$0	\$0	\$0	\$0	\$0	\$0
Newburg Boro.		\$0	\$0	\$0	\$0	\$0	\$0	\$0	\$0	\$0	\$0	\$0	\$0	\$0	\$0	\$0	\$0
New Cumberland Boro.		\$560,200	\$120,067	\$0	\$0	\$0	\$0	\$0	\$0	\$0	\$0	\$0	\$0	\$0	\$0	\$0	\$360,200
Newville Boro.		\$0	\$0	\$0	\$0	\$0	\$0	\$0	\$0	\$0	\$0	\$0	\$0	\$0	\$0	\$0	\$0
North Middleton Twp.		\$3,676,053	\$183,803	\$490,000	\$122,500	\$0	\$0	\$500,000	\$100,000	\$899,350	\$64,239	\$0	\$0	\$0	\$0	\$0	\$5,565,403
North Newton Twp.		\$144,500	\$13,1364	\$0	\$0	\$0	\$0	\$0	\$0	\$0	\$0	\$0	\$0	\$0	\$0	\$0	\$144,500
Penn Twp.		\$14,190	\$12,6878	\$0	\$0	\$0	\$0	\$0	\$0	\$2,640,000	\$88,000	\$0	\$0	\$0	\$0	\$0	\$14,190
Shippensburg Boro.		\$120,000	\$120,000	\$120,000	\$60,000	\$0	\$0	\$0	\$0	\$0	\$0	\$0	\$0	\$0	\$0	\$0	\$240,000
Shippensburg Twp.		\$0	\$0	\$0	\$0	\$8,600,000	\$79,630	\$135,000	\$67,500	\$8,1946	\$40,973	\$0	\$0	\$0	\$0	\$0	\$8,866,946
Shiremanstown Boro.		\$0	\$0	\$0	\$0	\$0	\$0	\$0	\$0	\$0	\$0	\$0	\$0	\$0	\$0	\$0	\$0
Silver Spring Twp.		\$27,194,000	\$186,260	\$760,000	\$126,667	\$0	\$0	\$6,081,000	\$19,235	\$0	\$0	\$0	\$0	\$0	\$0	\$0	\$34,035,000
South Middleton Twp.		\$9,312,503	\$258,681	\$0	\$0	\$0	\$0	\$3,215,240	\$14,830	\$15,000	\$57,500	\$0	\$0	\$0	\$0	\$0	\$12,642,743
South Newton Twp.		\$563,000	\$28,1500	\$0	\$0	\$0	\$0	\$0	\$0	\$66,750	\$66,750	\$0	\$0	\$0	\$0	\$0	\$629,750
Southampton Twp.		\$5,977,970	\$135,863	\$0	\$0	\$6,129,128	\$63,845	\$54,320	\$90,533	\$2,110,000	\$327,500	\$0	\$0	\$0	\$0	\$0	\$12,861,298
Upper Allen Twp.		\$6,721,287	\$258,511	\$0	\$0	\$74,6020	\$67,820	\$6,680,469	\$76,787	\$0	\$0	\$0	\$0	\$0	\$0	\$0	\$14,147,776
Upper Frankford Twp.		\$390,000	\$195,000	\$0	\$0	\$0	\$0	\$0	\$0	\$651,800	\$81,475	\$0	\$0	\$0	\$0	\$0	\$1,041,800
Upper Mifflin Twp.		\$437,547	\$145,849	\$0	\$0	\$0	\$0	\$0	\$0	\$0	\$0	\$0	\$0	\$0	\$0	\$0	\$437,547
West Pennsboro Twp.		\$1,465,000	\$183,125	\$459,356	\$22,9768	\$0	\$0	\$0	\$0	\$230,400	\$38,400	\$0	\$0	\$0	\$0	\$0	\$2,304,936
Wormleysburg Boro.		\$0	\$0	\$0	\$0	\$2,315,000	\$385,833	\$0	\$0	\$0	\$0	\$0	\$0	\$0	\$0	\$0	\$2,315,000
COUNTY TOTAL		\$12,042,139	\$219,261	\$2,912,784	\$112,030	\$20,692,348	\$79,586	\$43,282,048	\$109,575	\$3,998,668	\$62,479	\$55,500	\$91,183	\$582,758	\$32,111	\$183,766,245	

**TABLE C-5
COMMERCIAL, INDUSTRIAL & PUBLIC FACILITY CONSTRUCTION COSTS
CUMBERLAND COUNTY
2008**

Municipality	COMMERCIAL												INDUSTRIAL												CHURCHES, SCHOOLS & PUBLIC FACILITIES											
	New Establishments				Improvements/Expansions				New Establishments				Improvements/Expansions				New Establishments				Improvements/Expansions															
	No.	Average Cost	Total Cost	Average Cost	No.	Average Cost	Total Cost	Average Cost	No.	Average Cost	Total Cost	Average Cost	No.	Average Cost	Total Cost	Average Cost	No.	Average Cost	Total Cost	Average Cost	No.	Average Cost	Total Cost													
Camp Hill Boro.	0	\$0	\$0	\$0	2	\$106,500	\$3,250	\$106,500	0	\$0	\$0	\$0	0	\$0	\$0	0	\$0	\$0	0	\$0	2	\$106,500	\$3,250	\$106,500												
Carlike Boro.	1	\$216,700	\$216,700	\$8,832	411	\$3,629,886	\$3,846,586	\$8,832	1	\$6,997,000	\$6,997,000	\$1,382,946	4	\$1,382,946	\$5,457,37	\$8,379,946	\$1,382,946	0	\$0	0	0	41	\$2,501,426	\$610,100	\$2,501,426											
Cooke Township	0	\$0	\$0	\$0	0	\$0	\$0	\$0	0	\$0	\$0	\$0	0	\$0	\$0	0	\$0	\$0	0	\$0	0	\$0	\$0	\$0												
Dickinson Twp.	0	\$0	\$0	\$0	2	\$120,150	\$600,750	\$600,750	0	\$0	\$0	\$0	0	\$0	\$0	0	\$0	\$0	0	\$0	0	\$0	\$0	\$0												
East Pennsboro Twp.	1	\$500,300	\$500,300	\$6,420,824	33	\$6,420,824	\$9,457,0	\$9,457,0	0	\$0	\$0	\$0	0	\$0	\$0	0	\$0	\$0	0	\$0	16	\$2,447,000	\$152,938	\$2,447,000												
Hamden Twp.	4	\$8,740,150	\$2,185,038	\$4,703	37	\$5,464,994	\$14,205,144	\$4,703	14	\$162,038	\$1,157,56	\$1,157,56	14	\$162,038	\$1,157,56	\$1,620,38	\$1,157,56	0	\$0	0	0	0	\$0	\$0												
Harpwell Twp.	0	\$0	\$0	\$0	4	\$7,564,000	\$189,100	\$189,100	0	\$0	\$0	\$0	0	\$0	\$0	0	\$0	\$0	0	\$0	1	\$300,000	\$300,000	\$300,000												
Lemoine Boro.	0	\$0	\$0	\$0	19	\$26,128	\$13,752	\$13,752	0	\$0	\$0	\$0	6	\$155,028	\$2,583,8	\$155,028	\$2,583,8	0	\$0	0	0	0	\$0	\$0												
Lower Allen Twp.	1	\$650,000	\$650,000	\$26,965	32	\$862,891	\$1512,891	\$26,965	0	\$0	\$0	\$0	9	\$199,3,184	\$2,214,65	\$199,3,184	\$2,214,65	0	\$0	2	\$127,430	\$63,715	\$127,430													
Lower Frankford Twp.	0	\$0	\$0	\$0	0	\$0	\$0	\$0	0	\$0	\$0	\$0	0	\$0	\$0	0	\$0	\$0	0	\$0	0	\$0	\$0													
Lower Mifflin Twp.	0	\$0	\$0	\$0	0	\$0	\$0	\$0	0	\$0	\$0	\$0	0	\$0	\$0	0	\$0	\$0	0	\$0	0	\$0	\$0													
Mechanicsburg Boro.	1	\$110,000	\$110,000	\$26,095	5	\$130,477	\$14,147	\$26,095	0	\$0	\$0	\$0	5	\$2,13,38	\$4,268	\$2,13,38	\$4,268	0	\$0	1	\$2,650,000	\$2,650,000	\$2,650,000													
Middlesex Twp.	1	\$155,1940	\$155,1940	\$190,743	10	\$190,743	\$3,459,370	\$190,743	0	\$0	\$0	\$0	5	\$2,13,38	\$4,268	\$2,13,38	\$4,268	0	\$0	2	\$8,955,357	\$4,477,679	\$8,955,357													
Monroe Twp.	0	\$0	\$0	\$0	6	\$232,000	\$42,000	\$42,000	0	\$0	\$0	\$0	0	\$0	\$0	0	\$0	\$0	0	\$0	2	\$4,850,000	\$2,42,500	\$4,850,000												
Mt. Holly Springs Boro.	0	\$0	\$0	\$0	3	\$89,570	\$29,857	\$29,857	0	\$0	\$0	\$0	0	\$0	\$0	0	\$0	\$0	0	\$0	0	\$0	\$0	\$0												
Newburg Boro.	0	\$0	\$0	\$0	0	\$0	\$0	\$0	0	\$0	\$0	\$0	0	\$0	\$0	0	\$0	\$0	0	\$0	0	\$0	\$0													
New Cumberland Boro.	0	\$0	\$0	\$0	0	\$0	\$0	\$0	0	\$0	\$0	\$0	0	\$0	\$0	0	\$0	\$0	0	\$0	0	\$0	\$0													
Newville Boro.	0	\$0	\$0	\$0	2	\$4,500	\$4,500	\$4,500	0	\$0	\$0	\$0	0	\$0	\$0	0	\$0	\$0	0	\$0	4	\$253,255	\$63,314	\$253,255												
North Middletown Twp.	0	\$0	\$0	\$0	4	\$158,400	\$39,600	\$39,600	0	\$0	\$0	\$0	3	\$2,265,050	\$755,017	\$2,265,050	\$755,017	0	\$0	0	0	0	\$0	\$0												
North Newton Twp.	0	\$0	\$0	\$0	0	\$0	\$0	\$0	1	\$200,000	\$200,000	\$200,000	0	\$0	\$0	\$200,000	\$200,000	0	\$0	0	0	0	\$0	\$0												
Penn Twp.	0	\$0	\$0	\$0	1	\$4,500	\$4,500	\$4,500	2	\$312,500,000	\$15,625,000	\$312,500,000	9	\$209,200	\$23,244	\$31,459,200	\$23,244	2	\$1,950,370	\$975,185	0	0	\$0	\$1,950,370												
Shippenburg Boro.	0	\$0	\$0	\$0	5	\$350,000	\$70,000	\$70,000	0	\$0	\$0	\$0	1	\$1,000,000	\$1,000,000	\$1,000,000	\$1,000,000	0	\$0	2	\$68,1000	\$340,500	\$68,1000													
Shippenburg Twp.	1	\$525,000	\$525,000	\$0	0	\$0	\$0	\$0	0	\$0	\$0	\$0	0	\$0	\$0	0	\$0	\$0	0	\$0	0	\$0	\$0													
Shiremans town Boro.	0	\$0	\$0	\$0	1	\$265,695	\$265,695	\$265,695	0	\$0	\$0	\$0	0	\$0	\$0	0	\$0	\$0	0	\$0	0	\$0	\$0													
Silver Spring Twp.	9	\$4,985,000	\$53,889	\$89,316	38	\$3,394,000	\$8,379,000	\$89,316	3	\$291,000	\$97,000	\$97,000	0	\$0	\$0	\$2,910,000	\$97,000	4	\$138,1000	\$345,250	\$2,910,000	\$345,250														
South Middletown Twp.	12	\$48,596,673	\$4,049,723	\$104,664	29	\$3,032,251	\$516,519,24	\$104,664	0	\$0	\$0	\$0	0	\$0	\$0	0	\$0	\$0	0	\$0	0	\$0	\$0													
South Newton Twp.	0	\$0	\$0	\$0	0	\$0	\$0	\$0	0	\$0	\$0	\$0	0	\$0	\$0	0	\$0	\$0	0	\$0	0	\$0	\$0													
Southampton Twp.	4	\$1,662,700	\$415,675	\$16,035	0	\$0	\$0	\$16,035	2	\$210,000	\$105,000	\$105,000	2	\$210,000	\$105,000	\$210,000	\$105,000	0	\$0	1	\$33,441	\$33,441	\$33,441													
Upper Allen Twp.	4	\$8,019,000	\$2,002,975	\$15,000	21	\$3,381,731	\$11,393,631	\$15,000	0	\$0	\$0	\$0	0	\$0	\$0	0	\$0	\$0	0	\$0	0	\$0	\$0													
Upper Frankford Twp.	0	\$0	\$0	\$0	0	\$0	\$0	\$0	0	\$0	\$0	\$0	1	\$42,500	\$42,500	\$42,500	\$42,500	0	\$0	0	\$0	\$0														
Upper Mifflin Twp.	0	\$0	\$0	\$0	0	\$0	\$0	\$0	0	\$0	\$0	\$0	0	\$0	\$0	0	\$0	\$0	0	\$0	0	\$0	\$0													
West Pennsboro Boro.	1	\$30,000	\$30,000	\$1,500	1	\$1,500	\$1,500	\$1,500	0	\$0	\$0	\$0	0	\$0	\$0	1	\$1,500,000	\$1,500,000	1	\$35,000	\$35,000	\$35,000														
Wormleysburg Boro.	1	\$20,000	\$20,000	\$4,160	1	\$4,160	\$4,160	\$4,160	0	\$0	\$0	\$0	0	\$0	\$0	0	\$0	\$0	0	\$0	0	\$0	\$0													
COUNTY TOTAL	41	\$75,501,363	\$18,414,97	\$57,700	668	\$38,543,534	\$104,044,897	\$57,700	7	\$38,738,000	\$55,534,000	\$55,534,000	54	\$9,099,833	\$16,837,833	\$47,837,833	\$16,837,833	4	\$4,240,370	\$1,060,093	80	\$21,402,409	\$267,550	\$21,402,409												

*No. Response to Survey

TABLE C-6
NEW COMMERCIAL ESTABLISHMENTS
(based on issued building permits)
CUMBERLAND COUNTY
1999-2008

Municipality	1999	2000	2001	2002	2003	2004	2005	2006	2007	2008	Total
Camp Hill Boro.	*	0	4	1	1	3	7	1	0	0	17
Carlisle Boro.	13	3	1	9	8	15	4	3	0	1	57
Cooke Twp.	0	0	0	0	1	0	0	0	0	0	1
Dickinson Twp.	0	1	1	1	0	0	0	0	0	0	3
East Pennsboro Twp.	16	9	0	0	8	2	2	1	4	1	43
Hampden Twp.	11	2	5	3	1	9	7	6	3	4	51
Hopewell Twp.	0	2	0	0	0	0	0	0	0	0	2
Lemoyne Boro.	0	5	3	0	0	0	0	0	0	0	8
Lower Allen Twp.	2	6	4	4	2	3	2	7	1	1	32
Lower Frankford Twp.	0	0	0	0	0	1	0	0	0	0	1
Lower Mifflin Twp.	0	*	0	0	0	0	0	0	0	0	0
Mechanicsburg Boro.	0	0	0	0	0	1	0	0	0	1	2
Middlesex Twp.	4	2	3	1	2	3	1	0	0	1	17
Monroe Twp.	3	0	0	1	1	0	0	0	0	0	5
Mt. Holly Springs Boro.	0	0	0	1	1	0	0	0	0	0	2
Newburg Boro.	0	0	0	0	0	0	0	0	0	0	0
New Cumberland Boro.	1	3	1	0	1	0	1	0	0	0	7
Newville Boro.	1	0	0	0	0	0	0	1	2	0	4
North Middleton Twp.	0	0	2	0	2	0	2	6	4	0	16
North Newtown Twp.	0	0	0	0	0	0	0	0	0	0	0
Penn Twp.	0	2	1	0	0	0	0	0	0	0	3
Shippensburg Boro.	3	0	1	1	1	2	4	1	2	0	15
Shippensburg Twp.	0	0	2	4	1	2	3	4	2	1	19
Shiremanstown Boro.	0	0	0	0	0	0	0	0	0	0	0
Silver Spring Twp.	5	7	17	13	4	4	20	10	14	9	103
South Middleton Twp.	14	9	13	17	8	15	14	8	5	12	115
South Newton Twp.	0	0	0	0	2	0	0	0	0	0	2
Southampton Twp.	2	3	0	2	2	2	0	1	5	4	21
Upper Allen Twp.	10	6	3	15	3	2	0	9	8	4	60
Upper Frankford Twp.	0	3	1	0	1	0	0	0	0	0	5
Upper Mifflin Twp.	0	0	0	0	0	3	0	1	0	0	4
West Pennsboro Boro.	3	0	0	3	1	0	0	0	0	1	8
Wormleysburg Boro.	0	0	0	0	0	0	1	0	0	1	2
COUNTY TOTALS	88	63	62	76	51	67	68	59	50	41	625

*No Response to Survey

TABLE C-7
NEW INDUSTRIAL ESTABLISHMENTS
(based on issued building permits)
CUMBERLAND COUNTY
1999-2008

Municipality	1999	2000	2001	2002	2003	2004	2005	2006	2007	2008	Total
Camp Hill Boro.	*	1	0	0	0	0	0	0	0	0	1
Carlisle Boro.	1	1	0	1	1	0	0	2	0	1	7
Cooke Twp.	0	0	0	0	0	0	0	0	0	0	0
Dickinson Twp.	0	1	1	0	0	0	0	0	0	0	2
East Pennsboro Twp.	0	3	0	0	0	0	0	0	0	0	3
Hampden Twp.	0	4	3	0	0	0	0	0	1	0	8
Hopewell Twp.	0	0	0	0	0	0	0	0	0	0	0
Lemoyne Boro.	4	0	2	0	0	0	1	0	0	0	7
Lower Allen Twp.	0	0	0	0	0	0	0	1	0	0	1
Lower Frankford Twp.	0	0	0	0	0	0	0	0	0	0	0
Lower Mifflin Twp.	0	0	0	0	0	0	0	0	0	0	0
Mechanicsburg Boro.	0	0	0	0	0	0	0	0	0	0	0
Middlesex Twp.	1	0	0	0	0	0	0	0	0	0	1
Monroe Twp.	3	0	0	0	0	0	0	0	0	0	3
Mt. Holly Springs Boro.	0	0	0	0	0	0	0	0	0	0	0
Newburg Boro.	0	0	0	0	0	0	0	0	0	0	0
New Cumberland Boro.	1	0	0	0	1	0	0	0	0	0	2
Newville Boro.	0	0	0	0	0	0	0	0	0	0	0
North Middleton Twp.	0	0	0	1	0	0	1	2	1	0	5
North Newtown Twp.	0	0	0	0	0	0	0	0	0	1	1
Penn Twp.	0	0	0	0	0	1	0	0	0	2	3
Shippensburg Boro.	0	0	0	0	0	0	0	0	0	0	0
Shippensburg Twp.	0	0	0	0	0	1	0	0	0	0	1
Shiremanstown Boro.	0	0	0	0	0	0	0	0	0	0	0
Silver Spring Twp.	0	0	0	0	0	0	0	1	3	3	7
South Middleton Twp.	0	1	3	0	0	0	0	0	0	0	4
South Newton Twp.	0	0	0	0	0	0	0	0	0	0	0
Southampton Twp.	0	0	0	0	0	0	0	0	0	0	0
Upper Allen Twp.	4	1	1	0	0	0	0	0	1	0	7
Upper Frankford Twp.	0	0	0	0	0	0	0	0	0	0	0
Upper Mifflin Twp.	0	0	0	0	0	0	0	0	0	0	0
West Pennsboro Boro.	0	1	0	0	0	0	0	0	0	0	1
Wormleysburg Boro.	0	0	0	0	0	0	0	0	0	0	0
COUNTY TOTALS	14	13	10	2	2	2	2	6	6	7	64

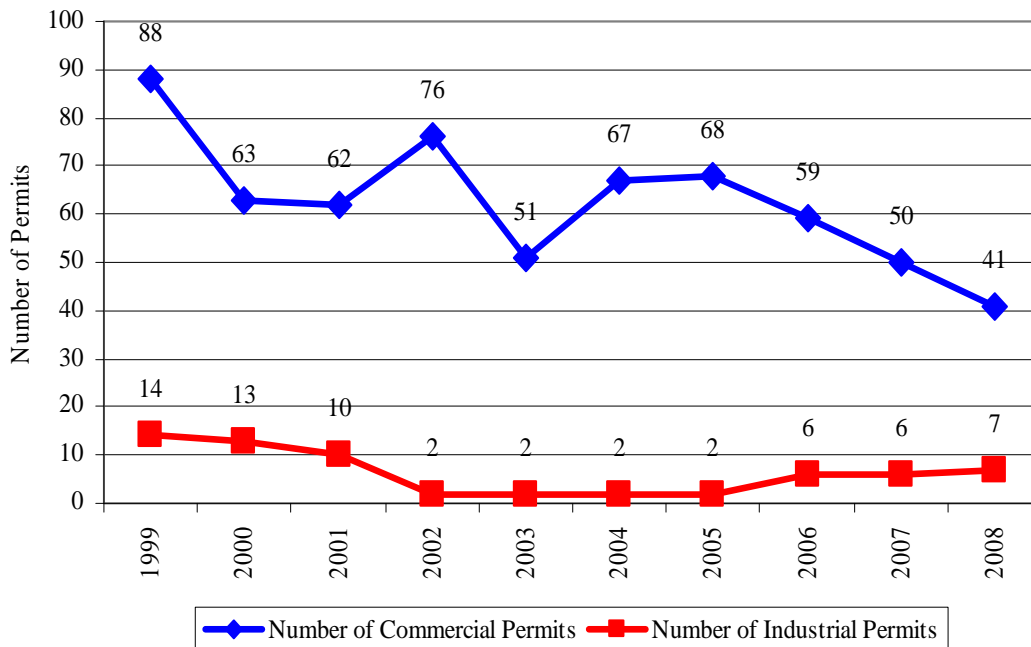
* No Response to Survey

**TABLE C-8
COMMERCIAL & INDUSTRIAL ESTIMATED CONSTRUCTION COSTS
(based on issued building permits)
CUMBERLAND COUNTY
1999-2008**

Year	COMMERCIAL				INDUSTRIAL			
	New Establishments		Improvements/Expansions		New Establishments		Improvements/Expansions	
	Number of Permits	Estimated Construction Costs	Number of Permits	Estimated Construction Costs	Number of Permits	Estimated Construction Costs	Number of Permits	Estimated Construction Costs
1999	88	\$49,596,068	231	\$28,353,031	14	\$13,511,452	31	\$13,073,156
2000	63	\$51,588,489	243	\$38,423,464	13	\$13,535,189	25	\$9,703,520
2001	62	\$33,797,693	220	\$18,905,392	10	\$62,884,089	22	\$4,200,217
2002	76	\$57,623,081	254	\$23,702,713	2	\$10,411,360	18	\$5,661,216
2003	51	\$20,648,773	254	\$48,541,550	2	\$9,160,167	23	\$8,971,675
2004	67	\$85,186,553	315	\$26,681,520	2	\$440,000	27	\$15,865,143
2005	68	\$84,741,436	347	\$39,643,813	2	\$15,208,808	45	\$9,567,281
2006	59	\$125,009,483	269	\$56,850,433	6	\$64,024,754	119	\$29,190,268
2007	50	\$58,546,782	596	\$73,408,282	6	\$35,948,687	63	\$14,618,597
2008	41	\$75,501,363	668	\$38,343,534	7	\$38,738,000	54	\$9,099,833

*Based on responses to yearly building permit surveys. In some years not all municipalities responded.

**CHART C-2
NUMBER OF PERMITS FOR NEW COMMERCIAL & INDUSTRIAL ESTABLISHMENTS
CUMBERLAND COUNTY
1999-2008**



DAUPHIN COUNTY

Table D-1: 2008 New Dwelling Units / Commercial / Industrial / Public Facility Establishments	Page 15
Table D-2: Dwelling Units by Type (1987-2008)	Page 16
Table D-3: Total New Dwelling Units (1998-2008)	Page 17
Chart D-1: Total New Dwelling Units (1987-2008)	Page 18
Table D-4: New Residential Construction Costs (2008)	Page 19
Table D-5: Commercial, Industrial, & Public Facility Construction Costs (2008)	Page 20
Table D-6: New Commercial Establishments (1999-2008)	Page 21
Table D-7: New Industrial Establishments (1999-2008)	Page 22
Table D-8: Commercial & Industrial Estimated Construction Costs (1999-2008)	Page 23
Chart D-2: Number of Permits for New Commercial & Industrial Establishments (1999-2008)	Page 23

In 2008, townhouses (255) led the number of residential building permits issued in Dauphin County. The top three municipalities issuing building permits for townhouse homes were: Swatara Township (68); Susquehanna Township (55); and Lower Paxton Township (49). Building permits were issued for a total of 252 single-family dwellings. The top three municipalities were: Lower Paxton Township (57); West Hanover Township (36); and Susquehanna Township (28).

In 2008 building permits were issued for 89 new commercial establishments. Municipalities issuing the most permits for new commercial establishments were: Derry Township (49); Swatara Township (13); and Susquehanna Township (7).

Building permits were issued for 7 new industrial establishments in 2008. Those permits were issued in Derry Township (4) and Lower Swatara Township (3).

TABLE D-1
NEW DWELLING UNITS / COMMERCIAL / INDUSTRIAL / PUBLIC FACILITY ESTABLISHMENTS
 (based on issued building permits)
DAUPHIN COUNTY
2008

Municipality	Single Family	Semi-Detached	Multi-Family Apartments	Townhouses	Mobile Homes	Apartment Conversions	Total New Residential Units	Dwellings Demolished	Net Total New Residential Units	Rehabed Housing	New Commercial Estabs.	New Industrial Estabs.	New Public Facility
Berrysburg Boro.	4	0	0	0	0	0	4	2	2	0	0	0	0
Conevago Twp.	0	2	0	0	0	0	2	0	2	0	0	0	0
Dauphin Boro.	14	0	0	16	4	0	34	16	18	0	49	4	2
Derry Twp.	19	0	0	0	7	0	26	2	24	0	3	0	1
East Hanover Twp.	0	0	0	0	1	0	1	0	1	2	0	0	0
Elizabethville Boro.	0	0	0	0	0	0	0	0	0	0	0	0	0
Gratz Boro.	0	0	0	0	0	0	0	0	0	0	0	0	0
Halifax Boro.	6	0	0	0	0	0	6	1	5	0	0	0	0
Halifax Twp.	0	4	47	0	0	0	51	25	26	142	4	0	3
Harrisburg City	1	0	0	0	0	0	1	6	-5	0	0	0	0
Highspire Boro.	0	0	0	0	0	0	0	4	-4	0	0	0	0
Hummelstown Boro.	4	0	0	0	0	0	4	0	4	0	0	0	0
Jackson Twp.	1	0	0	0	0	0	1	0	1	0	0	0	0
Jefferson Twp.	3	0	0	0	0	0	3	15	-12	0	0	0	0
Londonderry Twp.	57	0	0	49	0	0	106	13	93	0	6	0	0
Lower Paxton Twp.	5	2	0	5	0	0	12	0	12	0	1	3	0
Lower Swatara Twp.	0	0	0	0	1	0	1	0	1	0	0	0	0
Lykens Boro.	6	0	0	0	0	0	6	0	6	0	0	0	0
Lykens Twp.	8	0	0	0	0	0	8	2	6	0	2	0	0
Middle Paxton Twp.	0	0	0	0	1	0	1	1	0	1	0	0	0
Middletown Boro.	3	0	0	0	0	0	3	0	3	0	0	0	0
Mifflin Twp.	1	0	0	0	0	0	1	2	-1	0	0	0	0
Millersburg Boro.	0	0	0	0	0	0	0	0	0	0	0	0	0
Paxtang Boro.	0	0	0	0	0	0	0	0	0	98	0	0	0
Pembrook Boro.	0	0	0	0	0	0	0	0	0	0	0	0	0
Pillow Boro.	1	0	0	0	0	0	1	0	1	0	0	0	0
Reed Twp.	3	0	0	0	0	0	3	1	2	0	0	0	0
Royalton Boro.	0	0	0	0	0	0	0	0	0	0	0	0	0
Rush Twp.	4	0	0	24	0	0	38	3	35	0	1	0	14
South Hanover Twp.	1	0	0	0	0	0	1	3	-2	3	0	0	0
Steelton Boro.	28	6	0	55	0	0	89	4	85	1	7	0	1
Susquehanna Twp.	24	0	0	68	0	0	92	0	92	0	13	0	0
Swatara Twp.	8	0	0	0	4	0	12	1	11	0	0	0	1
Upper Paxton Twp.	0	0	0	0	4	0	4	1	3	0	0	0	0
Washington Twp.	4	0	0	0	0	0	4	0	4	0	0	0	0
Wayne Twp.	36	2	0	38	0	0	76	1	75	4	1	0	0
West Hanover Twp.	n/a	n/a	n/a	n/a	n/a	n/a	n/a	n/a	n/a	n/a	n/a	n/a	n/a
Wisconsin Twp.	1	0	0	0	0	0	1	0	1	0	2	0	0
Williams Twp.	0	0	0	0	0	0	0	3	-3	0	0	0	0
Williams to wn Boro.	252	16	47	255	22	0	592	106	486	251	89	7	22
COUNTY TOTAL													

*No Response to Survey ** Does Not Issue Building Permits

TABLE D-2
DWELLING UNITS BY TYPE
(based on issued building permits)
DAUPHIN COUNTY
1987-2008

Year	Single Family	Semi-Detached	Apartments	Townhouses	Mobile Homes	Apartment Conversions	TOTAL
1987	943	32	104	394	61	85	1,619
1988	827	30	192	391	29	6	1,475
1989	707	45	111	337	192	4	1,396
1990	624	31	288	175	124	6	1,248
1991	616	48	117	93	115	45	1,034
1992	747	42	89	168	87	3	1,136
1993	742	24	181	375	95	14	1,431
1994	657	31	109	279	92	6	1,174
1995	537	16	168	164	85	3	973
1996	525	16	339	259	63	10	1,212
1997	537	16	562	273	79	3	1,470
1998	524	41	220	244	39	0	1,068
1999	550	32	98	318	29	0	1,027
2000	398	26	68	288	27	7	814
2001	447	50	235	223	59	2	1,016
2002	431	34	96	317	12	2	892
2003	615	48	257	341	50	2	1,313
2004	572	70	10	346	29	1	1,028
2005	607	60	181	299	32	11	1,190
2006	443	37	61	287	21	1	850
2007	316	37	46	414	30	0	843
2008	252	16	47	255	22	0	592
TOTAL	12,617	782	3,579	6,240	1,372	211	24,801

*Based on municipalities which responded to Annual Building Permit Survey

From 1987 to 2006 Single-Family dwelling units outpaced other styles of housing for which building permits were issued. In 2007 and 2008, permits were issued for more Townhouses than Single-Family dwellings. The 22 year total of building permits for the Single-Family dwellings constituted 50.9 % of the total dwelling units for which building permits were issued. Semi-Detached units constituted 3.2%; Apartments 14.4%; Townhouses 25.2%; Mobile Homes 5.5%; and Apartment Conversions 0.9%.

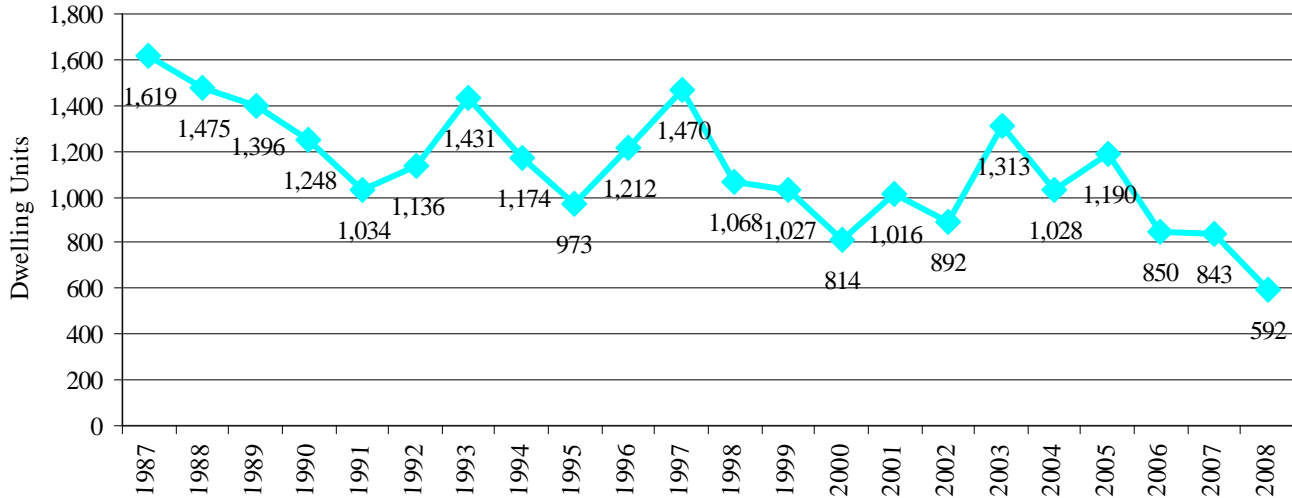
TABLED-3
TOTAL NEW DWELLING UNITS
(based on issued building permits)
DAUPHIN COUNTY
1999-2008

Municipality	1999	2000	2001	2002	2003	2004	2005	2006	2007	2008	Total
Berrysburg Boro.	0	0	0	4	0	3	0	0	0	0	7
Conewago Twp.	14	15	9	7	11	33	39	15	9	4	156
Dauphin Boro.	*	0	4	4	4	*	1	2	0	2	17
Derry Twp.	127	104	109	134	117	111	113	63	40	34	952
East Hanover Twp.	37	19	37	27	29	14	33	64	60	26	346
Elizabethville Boro.	0	0	0	0	0	1	0	0	0	1	2
Gratz Boro.	1	1	6	0	9	0	2	1	0	0	20
Halifax Boro.	0	*	0	0	0	0	0	0	1	0	1
Halifax Twp.	13	10	8	8	10	18	8	12	9	6	102
Harrisburg City	3	45	20	26	13	73	20	38	50	51	339
Highspire Boro.	0	5	2	0	2	1	1	6	1	1	19
Hummelstown Boro.	18	8	15	23	34	17	11	20	9	0	155
Jackson Twp.	9	11	13	8	7	12	10	0	0	4	74
Jefferson Twp.	3	1	1	0	3	1	1	3	0	1	14
Londonderry Twp.	17	12	32	14	30	17	10	11	11	3	157
Lower Paxton Twp.	290	131	311	125	177	177	189	152	167	106	1,825
Lower Swatara Twp.	40	88	109	28	39	37	40	37	36	12	466
Lykens Boro.	0	0	0	0	2	2	1	3	0	1	9
Lykens Twp.	3	4	3	1	10	9	4	3	4	6	47
Middle Paxton Twp.	18	19	17	19	34	23	19	27	12	8	196
Middletown Boro.	6	11	4	6	2	4	0	1	10	1	45
Mifflin Twp.	*	5	5	0	3	0	1	2	5	3	24
Millersburg Boro.	0	2	2	0	3	7	1	1	0	1	17
Paxtang Boro.	1	0	0	0	0	0	1	0	0	0	2
Penbrook Boro.	0	0	2	0	1	0	6	7	4	0	20
Pillow Boro.	1	0	0	0	0	0	0	0	0	0	1
Reed Twp.	1	4	2	1	1	2	2	2	1	1	17
Royalton Boro.	25	2	0	1	3	3	0	6	4	3	47
Rush Twp.	4	1	0	0	0	0	1	2	0	0	8
South Hanover Twp.	25	15	11	15	243	89	227	61	40	38	764
Steelton Boro.	0	5	6	8	8	0	0	3	2	1	33
Susquehanna Twp.	175	156	105	190	172	137	151	127	125	89	1,427
Swatara Twp.	91	27	23	54	92	*	84	*	97	92	560
Upper Paxton Twp.	15	18	23	18	20	50	16	14	12	12	198
Washington Twp.	12	5	4	3	6	6	2	0	0	4	42
Wayne Twp.	13	8	13	5	12	9	5	12	4	4	85
West Hanover Twp.	63	75	116	161	209	164	185	151	127	76	1,327
Wiconisco Twp.	0	6	3	1	1	2	5	3	1	n/a	22
Williams Twp.	2	1	0	0	6	6	1	1	2	1	20
Williamstown Boro.	0	0	1	1	0	0	0	0	0	0	2
COUNTY TOTAL	1,027	814	1,016	892	1,313	1,028	1,190	850	843	592	9,565

*=No response to survey

A graph showing trends from 1987 to 2008 is on Page 18. A table and graph illustrating a comparison of Cumberland, Dauphin and Perry Counties residential building permit activity from 1987 to 2008 are on Page 35 and Page 36, respectively.

CHART D-1
TOTAL DWELLING UNITS
 (based on building permits)
DAUPHIN COUNTY
1987-2008



From 1987 through 2008 in Dauphin County building permits for 24,801 dwelling units were issued (see Table C-D-P 1, Page 35). Building permits for the least number of dwelling units in Dauphin County (592) were issued in 2008. Building permits for the highest number (1,619) in Dauphin County were issued in 1987.

Within this same 22 year period, building permits were issued for a total of 29,118 dwelling units in Cumberland County (Page 35). Building permits for the least number of dwelling units (902) were issued in 1995. Building permits for the highest number of dwelling units (1,632) were issued in 2002.

For the years 1987 through 2008 in Perry County building permits for 5,463 dwelling units were issued (Page 35). Building permits for the least number of dwelling units in Perry County (73) were issued in 2007. Building permits for the highest number (376) were issued in 1987. [Note: In some years not all municipal building permit surveys were returned].

Building Permits Issued for All Types of Dwelling Units
1987-2008

Cumberland County: 29,118
 Dauphin County: 24,801
 Perry County: 5,463

**TABLE D-4
NEW RESIDENTIAL UNIT CONSTRUCTION COSTS
DAUPHIN COUNTY
2008**

Municipality	Single-Family		Semi-Detached		Apartments		Townhouses		Mobile Homes*		Apartment Conversions		Rehabbed Housing		Total New Residential Construction Costs
	Total Cost	Ave. Cost	Total Cost	Ave. Cost	Total Cost	Ave. Cost	Total Cost	Ave. Cost	Total Cost	Ave. Cost	Total Cost	Ave. Cost	Total Cost	Ave. Cost	
Berrysburg Boro.	****	****	****	****	****	****	****	****	****	****	****	****	****	****	****
Conewago Twp.	\$955,000	\$238,750	\$0	\$0	\$0	\$0	\$0	\$0	\$0	\$0	\$0	\$0	\$0	\$0	\$955,000
Dauphin Boro.	\$0	\$0	\$135,000	\$67,500	\$0	\$0	\$0	\$0	\$0	\$0	\$0	\$0	\$0	\$0	\$135,000
Derry Twp.	\$2,947,000	\$240,500	\$0	\$0	\$2,006,000	\$125,375	\$23,670	\$236,709	\$59,177	\$0	\$0	\$0	\$0	\$0	\$5,189,709
East Hanover Twp.	\$3,736,000	\$196,632	\$0	\$0	\$0	\$0	\$0	\$0	\$677,000	\$96,714	\$0	\$0	\$0	\$0	\$4,413,000
Elizabethville Boro.	\$0	\$0	\$0	\$0	\$0	\$0	\$0	\$0	\$69,200	\$69,200	\$0	\$0	\$10,000	\$5,000	\$79,200
Gratz Boro.	\$0	\$0	\$0	\$0	\$0	\$0	\$0	\$0	\$0	\$0	\$0	\$0	\$0	\$0	\$0
Halifax Boro.	\$0	\$0	\$0	\$0	\$0	\$0	\$0	\$0	\$0	\$0	\$0	\$0	\$0	\$0	\$0
Halifax Twp.	\$658,000	\$109,667	\$0	\$0	\$0	\$0	\$0	\$0	\$0	\$0	\$0	\$0	\$0	\$0	\$658,000
Harrisburg City	\$0	\$0	\$210,000	\$52,500	\$5,396,500	\$14,819	\$0	\$0	\$0	\$0	\$0	\$0	\$8,515,372	\$59,967	\$14,121,872
Higbire Boro.	\$32,000	\$32,000	\$0	\$0	\$0	\$0	\$0	\$0	\$0	\$0	\$0	\$0	\$0	\$0	\$32,000
Hummelstown Boro.	\$0	\$0	\$0	\$0	\$0	\$0	\$0	\$0	\$0	\$0	\$0	\$0	\$0	\$0	\$0
Jackson Twp.	\$750,000	\$187,500	\$0	\$0	\$0	\$0	\$0	\$0	\$0	\$0	\$0	\$0	\$0	\$0	\$750,000
Jefferson Twp.	n/a	n/a	\$0	\$0	\$0	\$0	\$0	\$0	\$0	\$0	\$0	\$0	\$0	\$0	n/a
Londonderry Twp.	\$554,760	\$184,920	\$0	\$0	\$0	\$0	\$0	\$0	\$0	\$0	\$0	\$0	\$0	\$0	\$554,760
Lower Paxton Twp.	\$110,302.48	\$193,513	\$0	\$0	\$9,340,126	\$190,615	\$0	\$0	\$0	\$0	\$0	\$0	\$0	\$0	\$20,370,344
Lower Swatara Twp.	\$974,982	\$194,996	\$264,000	\$132,000	\$0	\$0	\$505,000	\$10,100	\$0	\$0	\$0	\$0	\$0	\$0	\$1,743,982
Lykens Boro.	\$0	\$0	\$0	\$0	\$0	\$0	\$0	\$0	\$99,000	\$99,000	\$0	\$0	\$0	\$0	\$99,000
Lykens Twp.	\$923,443	\$153,907	\$0	\$0	\$0	\$0	\$0	\$0	\$0	\$0	\$0	\$0	\$0	\$0	\$923,443
Middle Paxton Twp.	***	***	\$0	\$0	\$0	\$0	\$0	\$0	\$0	\$0	\$0	\$0	\$0	\$0	***
Middletown Boro.	\$0	\$0	\$0	\$0	\$0	\$0	\$0	\$0	\$46,212	\$46,212	\$0	\$0	\$150,000	\$150,000	\$196,212
Mifflin Twp.	\$441,000	\$147,000	\$0	\$0	\$0	\$0	\$0	\$0	\$0	\$0	\$0	\$0	\$0	\$0	\$441,000
Millersburg Boro.	\$85,000	\$85,000	\$0	\$0	\$0	\$0	\$0	\$0	\$0	\$0	\$0	\$0	\$0	\$0	\$85,000
Paxtang Boro.	\$0	\$0	\$0	\$0	\$0	\$0	\$0	\$0	\$0	\$0	\$0	\$0	\$0	\$0	\$0
Pennbrook Boro.	\$0	\$0	\$0	\$0	\$0	\$0	\$0	\$0	\$0	\$0	\$0	\$0	\$579,265	\$579,265	\$579,265
Pillow Boro.	\$0	\$0	\$0	\$0	\$0	\$0	\$0	\$0	\$0	\$0	\$0	\$0	\$0	\$0	\$0
Reed Twp.	\$205,000	\$205,000	\$0	\$0	\$0	\$0	\$0	\$0	\$0	\$0	\$0	\$0	\$0	\$0	\$205,000
Royalton Boro.	\$534,905	\$178,302	\$0	\$0	\$0	\$0	\$0	\$0	\$0	\$0	\$0	\$0	\$0	\$0	\$534,905
Rush Twp.	\$0	\$0	\$0	\$0	\$0	\$0	\$0	\$0	\$0	\$0	\$0	\$0	\$0	\$0	\$0
South Hanover Twp.	\$3,249,611	\$232,115	\$0	\$0	\$1,570,080	\$65,420	\$0	\$0	\$0	\$0	\$0	\$0	\$0	\$0	\$4,819,691
Stuilton Boro.	\$135,270	\$135,270	\$0	\$0	\$0	\$0	\$0	\$0	\$0	\$0	\$0	\$0	\$65,000	\$216,670	\$200,270
Susquehanna Twp.	\$3,946,338	\$140,941	\$740,000	\$123,333	\$0	\$0	\$5,829,410	\$105,989	\$0	\$0	\$0	\$0	\$52,000	\$17,333	\$10,367,748
Swatara Twp.	\$2,853,644	\$118,902	\$0	\$0	\$5,090,600	\$74,862	\$0	\$0	\$0	\$0	\$0	\$0	\$0	\$0	\$7,944,244
Upper Paxton Twp.	\$1,195,000	\$149,375	\$0	\$0	\$0	\$0	\$0	\$0	\$24,555	\$24,555	\$0	\$0	\$0	\$0	\$1,409,555
Washington Twp.	\$0	\$0	\$0	\$0	\$0	\$0	\$0	\$0	\$245,000	\$245,000	\$0	\$0	\$0	\$0	\$245,000
Wayne Twp.	\$786,000	\$196,500	\$0	\$0	\$0	\$0	\$0	\$0	\$0	\$0	\$0	\$0	\$0	\$0	\$786,000
West Hanover Twp.	\$7,714,949	\$214,304	\$420,592	\$210,296	\$0	\$0	\$5,469,036	\$143,922	\$0	\$0	\$0	\$0	\$695,366	\$173,842	\$14,299,943
Wilcomico Twp.	****	****	****	****	****	****	****	****	****	****	****	****	****	****	****
Williams Twp.	\$101,405	\$101,405	\$0	\$0	\$0	\$0	\$0	\$0	\$0	\$0	\$0	\$0	\$0	\$0	\$101,405
Williamsstown Boro.	\$0	\$0	\$0	\$0	\$0	\$0	\$0	\$0	\$0	\$0	\$0	\$0	\$0	\$0	\$0
COUNTY TOTAL	\$43,809,525	\$3,606,499	\$1,769,592	\$85,629	\$5,396,500	\$14,819	\$29,810,252	\$807,183	\$1,587,676	\$4,851,922	\$0	\$0	\$10,067,003	\$433,720	\$92,440,548

*May include replacement mobile homes. **Permits issued by square footage, not construction costs. ***Does not issue building permits. ****Not Available

Municipality	COMMERCIAL												INDUSTRIAL												CHURCHES, SCHOOLS & PUBLIC FACILITIES											
	New Establishments			Improvements/Expansions			TOTAL			New Establishments			Improvements/Expansions			TOTAL			New Establishments			Improvements/Expansions			TOTAL											
	No.	Average Cost	Total Cost	No.	Average Cost	Total Cost	No.	Average Cost	Total Cost	No.	Average Cost	Total Cost	No.	Average Cost	Total Cost	No.	Average Cost	Total Cost	No.	Average Cost	Total Cost	No.	Average Cost	Total Cost	No.	Average Cost	Total Cost									
Berryburg Boro.	0	\$0	\$0	0	\$0	\$0	0	\$0	\$0	0	\$0	\$0	0	\$0	\$0	0	\$0	\$0	0	\$0	\$0	0	\$0	\$0	0	\$0	\$0									
Conewago Twp.	0	\$0	\$0	0	\$0	\$0	0	\$0	\$0	0	\$0	\$0	0	\$0	\$0	0	\$0	\$0	0	\$0	\$0	0	\$0	\$0	0	\$0	\$0									
Dauphin Boro.	0	\$0	\$0	2	\$50,000	\$25,000	0	\$0	\$0	0	\$0	\$0	0	\$0	\$0	0	\$0	\$0	0	\$0	\$0	0	\$0	\$0	0	\$0	\$0									
Derry Twp.	49	\$57,819,102	\$1,169,778	52	\$13,489,442	\$259,412	4	\$18,1575	\$45,394	4	\$5,725,935	\$1,431,484	55,907,510	2	\$7,321,900	\$3,660,950	12	\$6,598,907	\$549,909	12	\$6,598,907	\$549,909	12	\$6,598,907	\$549,909	12	\$6,598,907	\$549,909								
East Hanover Twp.	3	\$2,181,000	\$727,000	12	\$3,000,000	\$25,000	0	\$0	\$0	0	\$0	\$0	\$0	0	\$0	\$0	0	\$0	\$0	0	\$0	\$0	0	\$0	\$0	0	\$0	\$0								
Elizabethville Boro.	0	\$0	\$0	0	\$0	\$0	0	\$0	\$0	0	\$0	\$0	0	\$0	\$0	0	\$0	\$0	0	\$0	\$0	0	\$0	\$0	0	\$0	\$0									
Gratz Boro.	0	\$0	\$0	1	\$140,000	\$140,000	0	\$0	\$0	0	\$0	\$0	\$0	0	\$0	\$0	0	\$0	\$0	0	\$0	\$0	0	\$0	\$0	0	\$0	\$0								
Hallifax Boro.	0	\$0	\$0	0	\$0	\$0	0	\$0	\$0	0	\$0	\$0	0	\$0	\$0	0	\$0	\$0	0	\$0	\$0	0	\$0	\$0	0	\$0	\$0									
Harrisburg City	4	\$33,399,067	\$8,349,767	180	\$71,637,042	\$397,984	0	\$0	\$0	0	\$0	\$0	\$0	0	\$0	\$0	12	\$4,274,405	\$356,200	3	\$2,168,750	\$722,917	33	\$73,740,752	\$2,234,568	33	\$73,740,752	\$2,234,568								
Highspire Boro.	0	\$0	\$0	0	\$0	\$0	0	\$0	\$0	0	\$0	\$0	0	\$0	\$0	0	\$0	\$0	0	\$0	\$0	0	\$0	\$0	0	\$0	\$0									
Hummelstown Boro.	0	\$0	\$0	5	\$179,100	\$35,820	0	\$0	\$0	0	\$0	\$0	\$0	0	\$0	\$0	0	\$0	\$0	0	\$0	\$0	0	\$0	\$0	0	\$0	\$0								
Jackson Twp.	0	\$0	\$0	0	\$0	\$0	0	\$0	\$0	0	\$0	\$0	\$0	0	\$0	\$0	0	\$0	\$0	0	\$0	\$0	0	\$0	\$0	0	\$0	\$0								
Jefferson Twp.	0	\$0	\$0	0	\$0	\$0	0	\$0	\$0	0	\$0	\$0	\$0	0	\$0	\$0	0	\$0	\$0	0	\$0	\$0	0	\$0	\$0	0	\$0	\$0								
Londonderry Twp.	0	\$0	\$0	0	\$0	\$0	0	\$0	\$0	0	\$0	\$0	\$0	0	\$0	\$0	8	\$4,741,719	\$592,715	0	\$0	\$0	0	\$0	\$0	2	\$776,060	\$388,030								
Lower Paxton Twp.	6	\$11,611,000	\$1,935,167	56	\$7,810,940	\$39,481	0	\$0	\$0	0	\$0	\$0	\$0	0	\$0	\$0	0	\$0	\$0	0	\$0	\$0	0	\$0	\$0	4	\$236,699	\$59,175								
Lower Swatara Twp.	1	\$10,946	\$10,946	8	\$416,877	\$52,110	0	\$0	\$0	0	\$0	\$0	\$0	0	\$0	\$0	26	\$15,500,311	\$596,166	0	\$0	\$0	0	\$0	\$0	0	\$0	\$0								
Lyles Boro.	0	\$0	\$0	0	\$0	\$0	0	\$0	\$0	0	\$0	\$0	\$0	0	\$0	\$0	0	\$0	\$0	0	\$0	\$0	0	\$0	\$0	0	\$0	\$0								
Mansfield Twp.	0	\$0	\$0	0	\$0	\$0	0	\$0	\$0	0	\$0	\$0	\$0	0	\$0	\$0	0	\$0	\$0	0	\$0	\$0	0	\$0	\$0	0	\$0	\$0								
Middle Paxton Twp.	2	n/a	n/a	5	n/a	n/a	0	\$0	\$0	0	\$0	\$0	\$0	0	\$0	\$0	0	\$0	\$0	0	\$0	\$0	0	\$0	\$0	0	\$0	\$0								
Middletown Boro.	0	\$0	\$0	0	\$0	\$0	0	\$0	\$0	0	\$0	\$0	\$0	0	\$0	\$0	0	\$0	\$0	0	\$0	\$0	0	\$0	\$0	0	\$0	\$0								
Mifflin Twp.	0	\$0	\$0	0	\$0	\$0	0	\$0	\$0	0	\$0	\$0	\$0	0	\$0	\$0	0	\$0	\$0	0	\$0	\$0	0	\$0	\$0	0	\$0	\$0								
Millersburg Boro.	0	\$0	\$0	0	\$0	\$0	0	\$0	\$0	0	\$0	\$0	\$0	0	\$0	\$0	0	\$0	\$0	0	\$0	\$0	0	\$0	\$0	0	\$0	\$0								
Paxton Boro.	0	\$0	\$0	13	\$242,059	\$18,620	0	\$0	\$0	0	\$0	\$0	\$0	0	\$0	\$0	0	\$0	\$0	0	\$0	\$0	0	\$0	\$0	0	\$0	\$0								
Pennbrook Boro.	0	\$0	\$0	0	\$0	\$0	0	\$0	\$0	0	\$0	\$0	\$0	0	\$0	\$0	0	\$0	\$0	0	\$0	\$0	0	\$0	\$0	0	\$0	\$0								
Pillow Boro.	0	\$0	\$0	0	\$0	\$0	0	\$0	\$0	0	\$0	\$0	\$0	0	\$0	\$0	0	\$0	\$0	0	\$0	\$0	0	\$0	\$0	0	\$0	\$0								
Reed Twp.	0	\$0	\$0	1	n/a	n/a	0	\$0	\$0	0	\$0	\$0	\$0	0	\$0	\$0	0	\$0	\$0	0	\$0	\$0	0	\$0	\$0	0	\$0	\$0								
Royalton Boro.	0	\$0	\$0	0	\$0	\$0	0	\$0	\$0	0	\$0	\$0	\$0	0	\$0	\$0	1	\$20,000	\$20,000	0	\$0	\$0	0	\$0	\$0	0	\$0	\$0								
Rush Twp.	0	\$0	\$0	0	\$0	\$0	0	\$0	\$0	0	\$0	\$0	\$0	0	\$0	\$0	0	\$0	\$0	0	\$0	\$0	0	\$0	\$0	0	\$0	\$0								
South Hanover Twp.	1	\$4,500,000	\$4,500,000	2	\$520,000	\$260,000	0	\$0	\$0	0	\$0	\$0	\$0	0	\$0	\$0	0	\$0	\$0	0	\$0	\$0	0	\$0	\$0	14	\$17,966,927	\$1,283,352								
Steelton Boro.	0	\$0	\$0	0	\$0	\$0	0	\$0	\$0	0	\$0	\$0	\$0	0	\$0	\$0	0	\$0	\$0	0	\$0	\$0	0	\$0	\$0	0	\$0	\$0								
Susquehanna Twp.	7	\$17,588,438	\$2,512,634	46	\$4,056,253	\$88,179	0	\$0	\$0	0	\$0	\$0	\$0	0	\$0	\$0	0	\$0	\$0	0	\$0	\$0	0	\$0	\$0	5	\$1,466,698	\$293,340								
Swatara Twp.	13	\$12,166,689	\$939,745	88	\$28,053,600	\$38,791	0	\$0	\$0	0	\$0	\$0	\$0	0	\$0	\$0	0	\$0	\$0	0	\$0	\$0	0	\$0	\$0	0	\$0	\$0								
Upper Paxton Twp.	0	\$0	\$0	3	\$235,500	\$78,500	0	\$0	\$0	0	\$0	\$0	\$0	0	\$0	\$0	0	\$0	\$0	0	\$0	\$0	0	\$0	\$0	1	\$685,000	\$685,000								
Washington Twp.	0	\$0	\$0	4	\$206,000	\$51,500	0	\$0	\$0	0	\$0	\$0	\$0	0	\$0	\$0	0	\$0	\$0	0	\$0	\$0	0	\$0	\$0	3	\$255,000	\$85,000								
Wayne Twp.	0	\$0	\$0	0	\$0	\$0	0	\$0	\$0	0	\$0	\$0	\$0	0	\$0	\$0	0	\$0	\$0	0	\$0	\$0	0	\$0	\$0	0	\$0	\$0								
West Hanover Twp.	1	\$160,000	\$160,000	4	\$207,800	\$51,950	0	\$0	\$0	0	\$0	\$0	\$0	0	\$0	\$0	1	\$33,000	\$33,000	0	\$0	\$0	0	\$0	\$0	3	\$234,885	\$78,295								
Wilkesboro Twp.	0	\$0	\$0	0	\$0	\$0	0	\$0	\$0	0	\$0	\$0	\$0	0	\$0	\$0	0	\$0	\$0	0	\$0	\$0	0	\$0	\$0	0	\$0	\$0								
Williams Twp.	2	\$44,000	\$22,000	0	\$0	\$0	0	\$0	\$0	0	\$0	\$0	\$0	0	\$0	\$0	0	\$0	\$0	0	\$0	\$0	0	\$0	\$0	0	\$0	\$0								
Williamstown Boro.	0	\$0	\$0	0	\$0	\$0	0	\$0	\$0	0	\$0	\$0	\$0	0	\$0	\$0	0	\$0	\$0	0	\$0	\$0	0	\$0	\$0	0	\$0	\$0								
COUNTY TOTAL	89	\$140,538,756	\$21,335,551	482	\$130,244,613	\$1,942,347	7	\$7,071,740	\$2,342,116	7	\$30,296,370	\$3,029,565	\$37,367,110	22	\$39,162,577	\$7,372,719	69	\$83,770,084	\$3,919,511	69	\$83,770,084	\$3,919,511	69	\$83,770,084	\$3,919,511	69	\$83,770,084	\$3,919,511								

TABLE D-6 NEW COMMERCIAL ESTABLISHMENTS (based on issued building permits) DAUPHIN COUNTY 1999-2008											
Municipality	1999	2000	2001	2002	2003	2004	2005	2006	2007	2008	Total
Berrysburg Boro.	0	0	0	0	0	1	0	0	0	0	1
Conewago Twp.	0	0	0	0	0	0	0	0	0	0	0
Dauphin Boro.	0	0	0	0	0	*	0	0	0	0	0
Derry Twp.	31	33	25	5	22	9	9	17	11	49	211
East Hanover Twp.	1	5	0	1	4	2	6	6	2	3	30
Elizabethville Boro.	0	0	0	0	0	0	0	0	0	0	0
Gratz Boro.	0	0	0	0	0	0	0	0	2	0	2
Halifax Boro.	0	*	0	0	0	0	0	1	0	0	1
Halifax Twp.	0	0	0	0	0	3	0	0	0	0	3
Harrisburg City	5	8	5	6	5	1	5	1	7	4	47
Highspire Boro.	0	1	1	0	0	1	0	0	0	0	3
Hummelstown Boro.	0	0	0	0	5	0	0	1	0	0	6
Jackson Twp.	0	0	0	0	0	0	0	0	0	0	0
Jefferson Twp.	0	0	0	0	0	0	1	0	0	0	1
Londonderry Twp.	1	3	0	2	1	2	2	4	0	0	15
Lower Paxton Twp.	11	32	15	11	13	7	14	11	5	6	125
Lower Swatara Twp.	0	5	0	0	0	0	0	1	0	1	7
Lykens Boro.	0	0	0	1	0	0	0	0	0	0	1
Lykens Twp.	0	0	1	0	0	0	0	1	2	0	4
Middle Paxton Twp.	0	0	0	0	0	0	0	1	0	2	3
Middletown Boro.	1	1	0	2	1	0	1	0	0	0	6
Mifflin Twp.	0	3	0	0	2	0	0	1	1	0	7
Millersburg Boro.	0	0	1	0	0	1	0	0	0	0	2
Paxtang Boro.	0	0	0	0	0	0	0	0	0	0	0
Penbrook Boro.	0	0	0	0	0	0	0	0	0	0	0
Pillow Boro.	0	0	0	0	0	0	0	0	0	0	0
Reed Twp.	0	0	0	0	0	0	0	0	0	0	0
Royalton Boro.	0	0	0	0	0	0	0	0	0	0	0
Rush Twp.	0	0	0	0	0	0	0	0	0	0	0
South Hanover Twp.	1	0	0	0	0	0	7	12	1	1	22
Steelton Boro.	0	0	0	1	2	0	0	0	0	0	3
Susquehanna Twp.	22	6	12	7	10	24	15	19	5	7	127
Swatara Twp.	6	16	4	0	11	*	**9	*	12	13	71
Upper Paxton Twp.	0	0	2	2	1	3	0	0	0	0	8
Washington Twp.	1	0	0	0	0	0	0	0	0	0	1
Wayne Twp.	0	0	0	0	0	0	0	0	0	0	0
West Hanover Twp.	4	3	6	0	4	25	6	5	2	1	56
Wiconisco Twp.	0	0	0	0	0	0	0	0	0	n/a	0
Williams Twp.	0	0	0	0	0	0	0	0	0	2	2
Williamstown Boro.	0	0	0	0	0	0	0	0	0	0	0
COUNTY TOTAL	84	116	72	38	81	79	75	81	50	89	765
*No Response to Survey											
**Swatara Combined Industrial with Commercial											

**TABLE D-7
NEW INDUSTRIAL ESTABLISHMENTS
(based on issued building permits)
DAUPHIN COUNTY
1999-2008**

Municipality	1999	2000	2001	2002	2003	2004	2005	2006	2007	2008	Total
Berrysburg Boro.	0	0	0	0	0	0	0	0	0	0	0
Conewago Twp.	0	0	0	0	0	0	0	0	0	0	0
Dauphin Boro.	0	0	0	0	0	*	0	0	0	0	0
Derry Twp.	0	0	0	0	0	0	3	2	0	4	9
East Hanover Twp.	0	0	0	0	0	0	1	0	0	0	1
Elizabethville Boro.	0	0	0	0	0	0	0	0	0	0	0
Gratz Boro.	0	0	0	0	0	0	0	0	0	0	0
Halifax Boro.	0	*	0	0	0	0	0	0	0	0	0
Halifax Twp.	0	0	2	0	0	0	0	1	0	0	3
Harrisburg City	0	0	0	0	0	1	0	0	0	0	1
Highspire Boro.	0	1	0	1	0	1	0	0	0	0	3
Hummelstown Boro.	0	0	0	0	0	0	0	0	0	0	0
Jackson Twp.	0	0	0	0	0	0	0	0	0	0	0
Jefferson Twp.	0	0	0	0	0	0	0	0	0	0	0
Londonderry Twp.	0	0	0	0	0	0	0	0	0	0	0
Lower Paxton Twp.	3	1	0	0	0	4	0	0	0	0	8
Lower Swatara Twp.	1	4	0	1	4	0	1	2	1	3	17
Lykens Boro.	0	0	0	0	0	0	0	0	0	0	0
Lykens Twp.	0	0	0	0	0	0	0	0	0	0	0
Middle Paxton Twp.	0	0	0	0	0	0	0	0	0	0	0
Middletown Boro.	0	0	0	0	0	1	0	0	0	0	1
Mifflin Twp.	0	0	3	0	0	0	0	0	0	0	3
Millersburg Boro.	0	0	0	0	0	0	0	0	0	0	0
Paxtang Boro.	0	0	0	0	0	0	0	0	0	0	0
Penbrook Boro.	0	0	0	0	0	0	0	0	0	0	0
Pillow Boro.	0	0	0	0	0	0	0	0	0	0	0
Reed Twp.	0	0	0	0	0	0	0	0	0	0	0
Royalton Boro.	0	0	0	0	0	0	0	0	0	0	0
Rush Twp.	0	0	0	0	0	0	0	0	0	0	0
South Hanover Twp.	0	0	0	0	0	0	0	0	2	0	2
Steelton Boro.	0	0	0	0	0	0	0	0	0	0	0
Susquehanna Twp.	0	0	0	0	0	0	0	0	0	0	0
Swatara Twp.	2	0	0	0	0	*	**	*	0	0	2
Upper Paxton Twp.	0	0	0	0	0	0	0	0	0	0	0
Washington Twp.	0	0	0	0	0	0	0	0	0	0	0
Wayne Twp.	0	0	0	0	0	0	0	0	0	0	0
West Hanover Twp.	2	4	1	0	0	2	0	0	0	0	9
Wiconisco Twp.	0	0	0	0	0	0	0	0	0	n/a	0
Williams Twp.	0	0	0	0	0	0	0	0	0	0	0
Williamstown Boro.	0	0	0	0	0	0	0	0	0	0	0
TOTAL	8	10	6	2	4	9	5	5	3	7	59

*No Response to Survey

**Swatara Combined Totals with Commercial

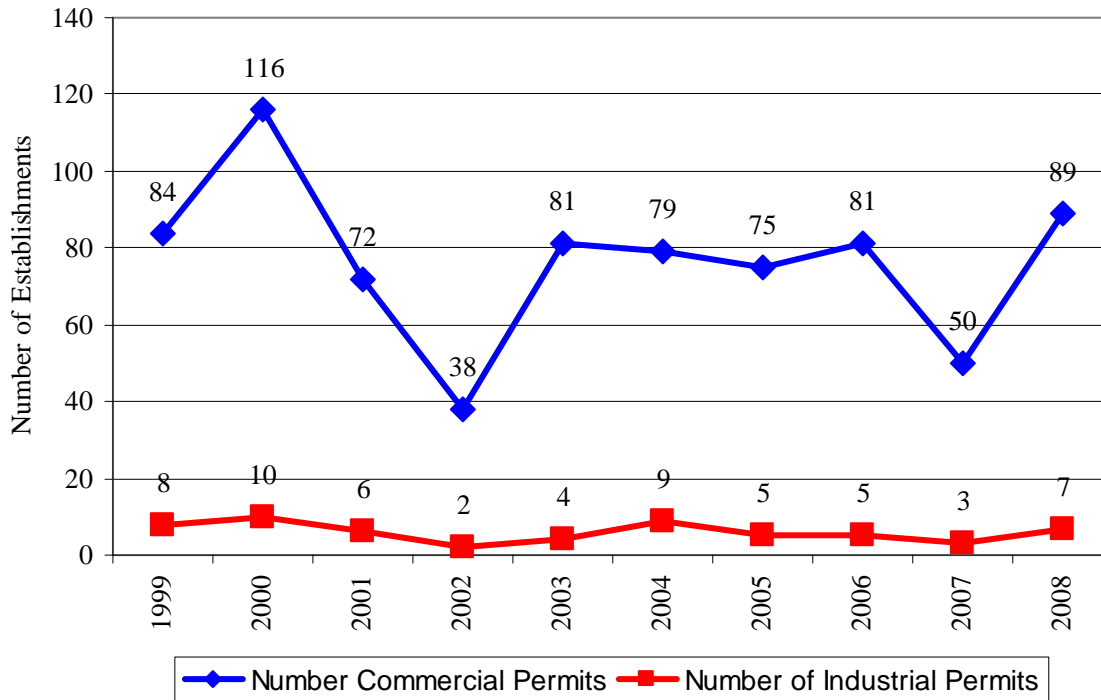
**TABLE D-8
COMMERCIAL & INDUSTRIAL ESTIMATED CONSTRUCTION COSTS* **
(based on issued building permits)
DAUPHIN COUNTY
1999-2008**

Year	COMMERCIAL				INDUSTRIAL			
	New Establishments		Improvements/Expansions		New Establishments		Improvements/Expansions	
	Number of Permits	Estimated Construction Costs	Number of Permits	Estimated Construction Costs	Number of Permits	Estimated Construction Costs	Number of Permits	Estimated Construction Costs
1999	84	\$181,754,404	706	\$204,811,278	8	\$19,649,610	59	\$10,126,699
2000	116	\$138,410,978	890	\$214,637,084	10	\$23,837,233	37	\$9,097,797
2001	72	\$56,568,806	672	\$190,156,434	6	\$6,395,000	29	\$5,042,582
2002	38	\$69,995,077	672	\$50,322,810	2	\$2,714,400	32	\$7,394,079
2003	81	\$68,234,086	625	\$288,987,689	4	\$17,425,269	19	\$12,877,724
2004	79	\$36,846,321	227	\$52,077,450	9	\$4,555,473	26	\$3,934,411
2005	75	\$54,612,043	510	\$71,883,853	5	\$3,512,575	31	\$5,778,666
2006	81	\$301,518,941	1,320	\$55,553,223	5	\$16,812,672	53	\$14,015,239
2007	50	\$122,812,903	525	\$46,245,781	3	\$10,108,148	34	\$6,823,378
2008	89	\$140,538,756	482	\$130,244,613	7	\$7,071,740	52	\$30,295,370

* In 2005 Swatara Twp. included industrial in with commercial

** Based on responses to yearly building permit surveys. In some years not all municipalities responded.

**CHART D-2
NUMBER OF PERMITS FOR NEW COMMERCIAL & INDUSTRIAL ESTABLISHMENTS
DAUPHIN COUNTY
1999-2008**



PERRY COUNTY

Table P-1: 2008 New Dwelling Units / Commercial / Industrial / Public Facility Establishments	Page 25
Table P-2: Dwelling Units by Type (1987-2008)	Page 26
Table P-3: Total New Dwelling Units (1999-2008)	Page 27
Chart P-1: Total New Dwelling Units (1987-2008)	Page 28
Table P-4: New Residential Construction Costs (2008)	Page 29
Table P-5: Commercial, Industrial, & Public Facility Construction Costs (2008)	Page 30
Table P-6: New Commercial Establishments (1999-2008)	Page 31
Table P-7: New Industrial Establishments (1999-2008)	Page 32
Table P-8: Commercial & Industrial Estimated Construction Costs (1999-2008)	Page 33
Chart P-2: Number of Permits for New Commercial & Industrial Establishments	Page 33

For 2008, eight (8) municipalities did not provide building permit data. Of those who provided data, residential building permits for 58 single-family homes were issued in Perry County, more than other types of dwelling units. The top four municipalities issuing building permits for single-family homes were: Centre Township (6); N.E. Madison Township (6); Penn Township (6); Spring Township (7); and Wheatfield Township (6).

In the data provided, building permits for six (6) new commercial establishments were issued: Juniata Township (1); Oliver Township (1); Penn Township (2); and Spring Township (2).

For the municipalities providing building permit data, no building permits were issued for new industrial establishments in 2008.

TABLE P-1
NEW DWELLING UNITS / COMMERCIAL / INDUSTRIAL / PUBLIC FACILITY ESTABLISHMENTS
 (based on issued building permits)
PERRY COUNTY
2008

Municipality	Single Family	Semi-Detached	Multi-Family Apartments	Townhouses	Mobile Homes	Apartment Conversions	Total New Residential Units	Dwellings Demolished	Net Total New Residential Units	Rehabed Housing	New Commercial Estabs.	New Industrial Estabs.	New Public Facility
Blain Borough	0	0	0	0	0	0	0	0	0	3	0	0	0
Bloomfield Borough	1	0	0	0	0	0	1	0	1	1	0	0	0
Buffalo Township	*	*	*	*	*	*	*	*	*	*	*	*	*
Carroll Township	*	*	*	*	*	*	*	*	*	*	*	*	*
Centre Township	6	0	0	0	2	0	8	0	8	11	0	0	0
Duncannon Borough	0	0	0	0	1	1	2	0	2	2	0	0	0
Greenwood Township	3	0	0	0	0	0	3	0	3	0	0	0	0
Howe Township	0	0	0	0	0	0	0	1	-1	1	0	0	0
Jackson Township	*	*	*	*	*	*	*	*	*	*	*	*	*
Juniata Township	2	0	0	0	0	0	2	0	2	0	1	0	0
Landisburg Borough	0	0	0	0	0	0	0	0	0	0	0	0	0
Liverpool Borough	*	*	*	*	*	*	*	*	*	*	*	*	*
Liverpool Township	3	0	0	0	1	0	4	4	0	0	0	0	0
Marysville Borough	3	0	0	10	0	0	13	1	12	0	0	0	0
Miller Township	2	0	0	0	6	0	8	1	7	0	0	0	0
Millerstown Borough	1	0	0	0	0	0	1	0	1	0	0	0	0
New Buffalo Borough	*	*	*	*	*	*	*	*	*	*	*	*	*
Newport Borough	*	*	*	*	*	*	*	*	*	*	*	*	*
NE Madison Township	6	0	0	0	1	0	7	1	6	0	0	0	0
Oliver Township	3	0	0	0	0	0	3	1	2	0	1	0	0
Penn Township	6	0	0	0	0	0	6	5	1	0	2	0	0
Rye Township	1	0	0	0	0	0	1	2	-1	0	0	0	0
Saville Township	*	*	*	*	*	*	*	*	*	*	*	*	*
SW Madison Township	1	0	0	0	0	0	1	0	1	0	0	0	0
Spring Township	7	0	0	0	1	0	8	0	8	0	2	0	0
Toboyne Township	3	0	0	0	0	0	3	0	3	0	0	0	0
Tuscarora Township	2	1	0	0	2	0	5	0	5	1	0	0	0
Tyone Township	*	*	*	*	*	*	*	*	*	*	*	*	*
Watts Township	2	0	0	0	0	0	2	0	2	0	0	0	0
Wheatfield Township	6	0	0	0	3	0	9	0	9	0	0	0	0
COUNTY TOTAL	58	1	0	10	17	1	87	16	71	19	6	0	0

*Did not provide building permit data.

**TABLE P-2
DWELLING UNITS BY TYPE*
(based on issued building permits)
PERRY COUNTY
1987- 2008**

Year	Single Family	Semi-Detached	Apartments	Townhouses	Mobile Homes	Apartment Conversions	TOTAL
1987	226	0	12	58	75	5	376
1988	204	0	44	0	101	0	349
1989	221	0	6	0	95	2	324
1990	172	2	0	24	102	5	305
1991	169	62	0	6	59	0	296
1992	188	11	0	0	48	0	247
1993	141	0	0	0	49	5	195
1994	167	0	63	12	69	0	311
1995	159	9	0	0	57	5	230
1996	159	2	0	14	70	0	245
1997	151	11	0	4	103	0	269
1998	174	8	12	9	79	0	282
1999	152	13	17	7	71	0	260
2000	145	15	3	5	80	1	249
2001	142	4	0	9	49	n/a	204
2002	187	0	0	30	40	0	257
2003	164	12	0	22	45	2	245
2004	198	15	2	36	40	0	291
2005	158	2	0	26	56	0	242
2006	110	1	0	0	15	0	126
2007	60	0	0	5	7	1	73
2008	58	1	0	10	17	1	87
TOTAL	3,505	168	159	277	1,327	27	5,463

* Based on municipalities which provided data in Annual Building Permit Survey

From 1987 to 2008 Single-Family dwelling units outpaced other styles of housing for which building permits were issued. The 22 year total of building permits for Single-Family dwellings constituted 64.2% of the total dwelling units for which building permits were issued. Semi-Detached units constituted 3.1%; Apartments 3.0%; Townhouses 5.1%; Mobile Homes 24.3%; and Apartment Conversions 0.5%

**Between 1987 And 2008 Building Permits
For The Most Single-Family
Dwellings Were Issued
In 1987 (226).**

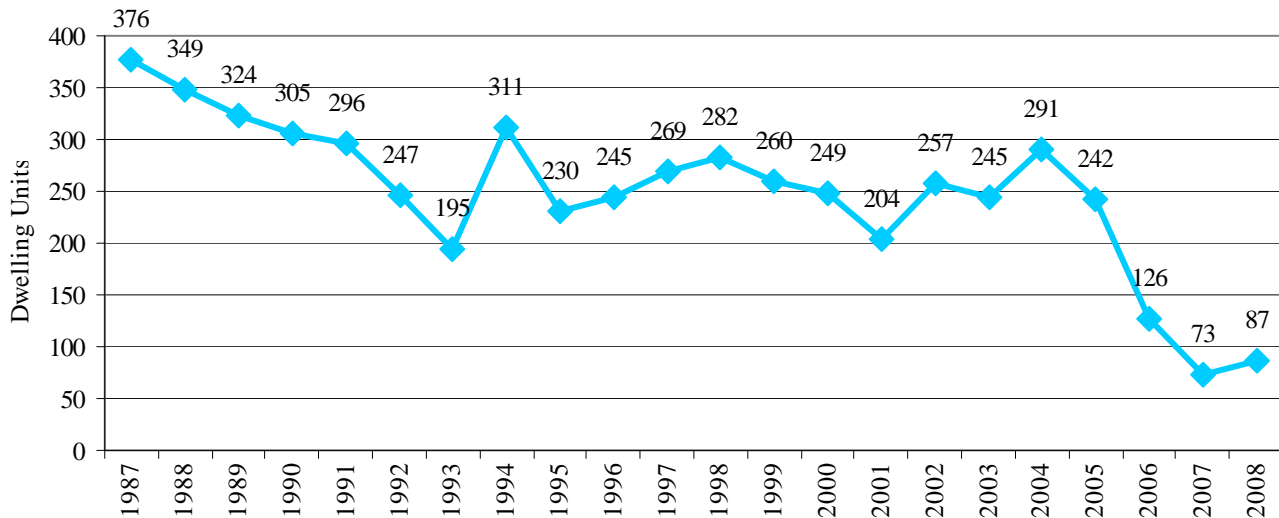
TABLE P-3
TOTAL NEW DWELLING UNITS
(based on issued building permits)
PERRY COUNTY
1999-2008

Municipality	1999	2000	2001	2002	2003	2004	2005	2006	2007	2008	Total
Blain Borough	0	0	0	0	0	0	0	0	0	0	0
Bloomfield Borough	1	8	1	2	2	17	8	1	0	1	41
Buffalo Township	5	1	7	14	6	6	7	3	*	*	49
Carrol Township	32	45	35	28	38	26	48	19	*	*	271
Centre Township	25	25	17	18	19	28	18	15	*	8	173
Duncannon Borough	6	3	1	1	8	4	4	2	1	2	32
Greenwood Township	4	6	6	4	*	8	5	4	3	3	43
Howe Township	4	3	1	1	0	3	0	0	2	0	14
Jackson Township	2	3	3	4	3	4	0	0	*	*	19
Juniata Township	16	16	4	17	20	13	4	5	5	2	102
Landisburg Borough	0	0	0	0	0	0	0	0	0	0	0
Liverpool Borough	2	3	1	7	1	1	2	1	*	*	18
Liverpool Township	5	3	*	4	6	8	10	4	5	4	49
Marysville Borough	*	6	21	29	32	46	16	5	*	13	168
Miller Township	16	14	12	8	13	12	7	5	6	8	101
Millerstown Borough	4	1	1	2	0	0	1	1	0	1	11
New Buffalo Borough	0	3	0	5	0	0	0	0	*	*	8
Newport Borough	11	0	0	0	0	0	0	0	*	*	11
NE Madison Township	4	4	3	4	7	8	3	2	3	7	45
Oliver Township	4	2	5	10	2	4	8	2	8	3	48
Penn Township	18	19	13	16	8	13	23	8	7	6	131
Rye Township	10	19	6	13	9	9	8	7	6	1	88
Saville Township	21	15	21	15	15	25	11	7	*	*	130
SW Madison Township	7	3	7	6	6	5	9	5	0	1	49
Spring Township	19	11	7	16	10	11	16	9	11	8	118
Toboynne Township	8	4	5	4	3	3	2	1	0	3	33
Tuscarora Township	11	7	10	11	12	12	7	8	*	5	83
Tyrone Township	*	*	*	*	*	2	0	1	*	*	3
Watts Township	4	4	7	6	12	7	16	1	5	2	64
Wheatfield Township	21	21	10	12	13	16	9	10	11	9	132
COUNTY TOTAL	260	249	204	257	245	291	242	126	73	87	2,034

* Did not provide building permit data.

The number of dwelling units for residential uses fluctuated from 1999 to 2008. The highest number of permits issued was 2004 (291). The lowest number was in 2007 (73), however, not all municipalities responded to the building permit surveys. A graph showing trends from 1987 to 2008 is on Page 28. A table and graph illustrating a comparison of Cumberland, Dauphin and Perry Counties residential building activity from 1987 to 2008 are on Page 35 and Page 36, respectively.

CHART P-1
TOTAL NEW DWELLING UNITS
 (based on ISSUED building permits)
PERRY COUNTY
1987-2008



For the years 1987 through 2008 in Perry County building permits for 5,463 dwelling units were issued (see Table C-D-P 1, Page 35). Building permits for the least number of dwelling units in Perry County (73) were issued in 2007. Building permits for the highest number (376) were issued in 1987.

[Note: In some years not all municipalities provided building permit data].

Within this same 22 year period, building permits were issued for a total of 29,118 dwelling units in Cumberland County (Page 35). Building permits for the least number of dwelling units (902) were issued in 1995. Building permits for the highest number of dwelling units (1,632) were issued in 2002.

From 1987 through 2008 in Dauphin County building permits for 24,801 dwelling units were issued (Page 35). Building permits for the least number of dwelling units in Dauphin County (592) were issued in 2008. Building permits for the highest number (1,619) in Dauphin County were issued in 1987.

Building Permits Issued for All Types of Dwelling Units

1987-2008

Cumberland County: 29,118

Dauphin County: 24,801

Perry County: 5,463

**TABLE P-4
NEW RESIDENTIAL UNIT CONSTRUCTION COSTS
PERRY COUNTY
2008**

Municipality	Single-Family		Semi-Detached		Apartments		Townhouses		Mobile Homes		Apartment Conversions		Rehabbed Housing		Total New Residential Construction Costs
	Total Cost	Ave. Cost	Total Cost	Ave. Cost	Total Cost	Ave. Cost	Total Cost	Ave. Cost	Total Cost	Ave. Cost	Total Cost	Ave. Cost	Total Cost	Ave. Cost	
Blain Borough	\$0	\$0	\$0	\$0	\$0	\$0	\$0	\$0	\$0	\$0	\$0	\$0	n/a	n/a	n/a
Bloomfield Borough	\$96,000	\$96,000	\$0	\$0	\$0	\$0	\$0	\$0	\$0	\$0	\$0	\$0	\$60,000	\$60,000	\$156,000
Buffalo Township	*	*	*	*	*	*	*	*	*	*	*	*	*	*	*
Carroll Township	*	*	*	*	*	*	*	*	*	*	*	*	*	*	*
Centre Township	\$0	\$0	\$0	\$0	\$0	\$0	\$0	\$0	\$0	\$0	\$0	\$0	\$0	\$0	\$0
Duncannon Borough	\$0	\$0	\$0	\$0	\$0	\$0	\$0	\$0	\$17,600	\$17,600	\$10,000	\$10,000	\$39,405	\$19,703	\$67,005
Greenwood Township	\$0	\$0	\$0	\$0	\$0	\$0	\$0	\$0	\$0	\$0	\$0	\$0	\$0	\$0	\$0
Howe Township	\$0	\$0	\$0	\$0	\$0	\$0	\$0	\$0	\$0	\$0	\$0	\$0	\$50,000	\$50,000	\$50,000
Jackson Township	*	*	*	*	*	*	*	*	*	*	*	*	*	*	*
Juniata Township	\$445,000	\$222,500	\$0	\$0	\$0	\$0	\$0	\$0	\$0	\$0	\$0	\$0	\$0	\$0	\$445,000
Landisburg Borough	\$0	\$0	\$0	\$0	\$0	\$0	\$0	\$0	\$0	\$0	\$0	\$0	\$0	\$0	\$0
Liverpool Borough	*	*	*	*	*	*	*	*	*	*	*	*	*	*	*
Liverpool Township	\$632,000	\$210,667	\$0	\$0	\$0	\$0	\$0	\$0	\$49,000	\$49,000	\$0	\$0	\$0	\$0	\$681,000
Marysville Borough	\$358,500	\$119,500	\$0	\$0	\$0	\$0	\$1,196,000	\$119,600	\$0	\$0	\$0	\$0	\$0	\$0	\$1,554,500
Miller Township	\$244,000	\$122,000	\$0	\$0	\$0	\$0	\$0	\$0	\$92,200	\$15,367	\$0	\$0	\$0	\$0	\$336,200
Millerstown Borough	\$145,000	\$145,000	\$0	\$0	\$0	\$0	\$0	\$0	\$0	\$0	\$0	\$0	\$0	\$0	\$145,000
New Buffalo Borough	*	*	*	*	*	*	*	*	*	*	*	*	*	*	*
Newport Borough	*	*	*	*	*	*	*	*	*	*	*	*	*	*	*
NE Madison Township	\$965,000	\$160,833	\$0	\$0	\$0	\$0	\$0	\$0	\$110,000	\$110,000	\$0	\$0	\$0	\$0	\$1,075,000
Oliver Township	\$415,916	\$138,639	\$0	\$0	\$0	\$0	\$0	\$0	\$0	\$0	\$0	\$0	\$0	\$0	\$415,916
Penn Township	\$417,590	\$69,598	\$0	\$0	\$0	\$0	\$0	\$0	\$0	\$0	\$0	\$0	\$0	\$0	\$417,590
Rye Township	\$50,000	\$50,000	\$0	\$0	\$0	\$0	\$0	\$0	\$0	\$0	\$0	\$0	\$0	\$0	\$50,000
Saville Township	*	*	*	*	*	*	*	*	*	*	*	*	*	*	*
SW Madison Township	\$0	\$0	\$0	\$0	\$0	\$0	\$0	\$0	\$0	\$0	\$0	\$0	\$0	\$0	\$0
Spring Township	n/a	n/a	\$0	\$0	\$0	\$0	\$0	\$0	n/a	n/a	\$0	\$0	\$0	\$0	n/a
Toboyne Township	\$0	\$0	\$0	\$0	\$0	\$0	\$0	\$0	\$0	\$0	\$0	\$0	\$0	\$0	\$0
Tuscarora Township	\$0	\$0	\$0	\$0	\$0	\$0	\$0	\$0	\$0	\$0	\$0	\$0	\$0	\$0	\$0
Tyrone Township	*	*	*	*	*	*	*	*	*	*	*	*	*	*	*
Watts Township	\$188,000	\$94,000	\$0	\$0	\$0	\$0	\$0	\$0	\$0	\$0	\$0	\$0	\$0	\$0	\$188,000
Wheatfield Township	\$1,317,480	\$219,580	\$0	\$0	\$0	\$0	\$0	\$0	\$87,033	\$87,033	\$0	\$0	\$0	\$0	\$1,578,580
COUNTY TOTAL	\$5,274,486	\$1,648,317	\$0	\$0	\$0	\$0	\$1,196,000	\$119,600	\$529,900	\$279,000	\$10,000	\$10,000	\$149,405	\$129,703	\$7,159,791

* Did not provide building permit data.

n/a = Not Available

**TABLE P-5
COMMERCIAL, INDUSTRIAL & PUBLIC FACILITY CONSTRUCTION COSTS
PERRY COUNTY
2008**

Municipality	COMMERCIAL										INDUSTRIAL										CHURCHES, SCHOOLS & PUBLIC FACILITIES									
	New Establishments			Improvements/Expansions			TOTAL	New Establishments			Improvements/Expansions			TOTAL	New Establishments			Improvements/Expansions			TOTAL	New Establishments			Improvements/Expansions			TOTAL		
	No.	Total Cost	Average Cost	No.	Total Cost	Average Cost		No.	Total Cost	Average Cost	No.	Total Cost	Average Cost		No.	Total Cost	Average Cost	No.	Total Cost	Average Cost		No.	Total Cost	Average Cost	No.	Total Cost	Average Cost			
Blain Borough	0	\$0	\$0	0	\$0	\$0	\$0	0	\$0	\$0	\$0	0	\$0	\$0	\$0	0	\$0	\$0	0	\$0	\$0	0	\$0	\$0	\$0					
Bloomfield Borough	0	\$0	\$0	0	\$0	\$0	\$0	0	\$0	\$0	\$0	0	\$0	\$0	\$0	0	\$0	\$0	0	\$0	\$0	0	\$0	\$0	\$0					
Buffalo Township	*	*	*	*	*	*	*	*	*	*	*	*	*	*	*	*	*	*	*	*	*	*	*	*	*	*				
Carroll Township	*	*	*	*	*	*	*	*	*	*	*	*	*	*	*	*	*	*	*	*	*	*	*	*	*	*				
Centre Township	0	\$0	\$0	0	\$0	\$0	\$0	0	\$0	\$0	\$0	0	\$0	\$0	\$0	0	\$0	\$0	0	\$0	\$0	0	\$0	\$0	\$0					
Duncannon Borough	0	\$0	\$130,500	3	\$43,500	\$130,500	\$130,500	0	\$0	\$0	\$0	0	\$0	\$0	\$0	0	\$0	\$0	0	\$0	\$0	0	\$0	\$0	\$0					
Greenwood Township	0	\$0	\$0	0	\$0	\$0	\$0	0	\$0	\$0	\$0	0	\$0	\$0	\$0	0	\$0	\$0	0	\$0	\$0	0	\$0	\$0	\$0					
Howe Township	0	\$0	\$375,000	4	\$93,750	\$375,000	\$375,000	0	\$0	\$0	\$0	0	\$0	\$0	\$0	0	\$0	\$0	0	\$0	\$0	0	\$0	\$0	\$0					
Jackson Township	*	*	*	*	*	*	*	*	*	*	*	*	*	*	*	*	*	*	*	*	*	*	*	*	*	*				
Juniata Township	1	n/a	n/a	0	\$0	n/a	n/a	0	\$0	\$0	\$0	0	\$0	\$0	\$0	0	\$0	\$0	0	\$0	\$0	0	\$0	\$0	\$0					
Landisburg Borough	0	\$0	\$0	0	\$0	\$0	\$0	0	\$0	\$0	\$0	0	\$0	\$0	\$0	0	\$0	\$0	0	\$0	\$0	0	\$0	\$0	\$0					
Liverpool Borough	*	*	*	*	*	*	*	*	*	*	*	*	*	*	*	*	*	*	*	*	*	*	*	*	*	*				
Liverpool Township	0	\$0	\$0	0	\$0	\$0	\$0	0	\$0	\$0	\$0	0	\$0	\$0	\$0	0	\$0	\$0	0	\$0	\$0	0	\$0	\$0	\$0					
Marysville Borough	0	\$0	\$0	0	\$0	\$0	\$0	0	\$0	\$0	\$0	0	\$0	\$0	\$0	0	\$0	\$0	0	\$0	\$0	0	\$0	\$0	\$0					
Miller Township	0	\$0	\$0	0	\$0	\$0	\$0	0	\$0	\$0	\$0	0	\$0	\$0	\$0	0	\$0	\$0	0	\$0	\$0	0	\$0	\$0	\$0					
Millertown Borough	0	\$0	\$25,000	1	\$25,000	\$25,000	\$25,000	0	\$0	\$0	\$0	0	\$0	\$0	\$0	0	\$0	\$0	0	\$0	\$0	0	\$0	\$0	\$0					
New Buffalo Borough	*	*	*	*	*	*	*	*	*	*	*	*	*	*	*	*	*	*	*	*	*	*	*	*	*	*				
Newport Borough	*	*	*	*	*	*	*	*	*	*	*	*	*	*	*	*	*	*	*	*	*	*	*	*	*	*				
NE Madison Township	0	\$0	\$0	0	\$0	\$0	\$0	0	\$0	\$0	\$0	0	\$0	\$0	\$0	0	\$0	\$0	0	\$0	\$0	0	\$0	\$0	\$0					
Oliver Township	1	\$85,000	\$85,000	1	\$120,000	\$120,000	\$205,000	0	\$0	\$0	\$0	0	\$0	\$0	\$0	0	\$0	\$0	0	\$0	\$0	0	\$0	\$0	\$325,000					
Penn Township	2	\$180,000	\$90,000	0	\$0	\$180,000	\$180,000	0	\$0	\$0	\$0	0	\$0	\$0	\$0	0	\$0	\$0	0	\$0	\$0	0	\$0	\$0	\$0					
Rye Township	0	\$0	\$0	0	\$0	\$0	\$0	0	\$0	\$0	\$0	0	\$0	\$0	\$0	0	\$0	\$0	0	\$0	\$0	0	\$0	\$0	\$0					
Saville Township	*	*	*	*	*	*	*	*	*	*	*	*	*	*	*	*	*	*	*	*	*	*	*	*	*	*				
SW Madison Township	0	\$0	\$0	0	\$0	\$0	\$0	0	\$0	\$0	\$0	0	\$0	\$0	\$0	0	\$0	\$0	0	\$0	\$0	0	\$0	\$0	\$0					
Spring Township	2	n/a	n/a	0	\$0	n/a	n/a	0	\$0	\$0	\$0	0	\$0	\$0	\$0	0	\$0	\$0	0	\$0	\$0	0	\$0	\$0	\$0					
Toboyne Township	0	\$0	\$0	0	\$0	\$0	\$0	0	\$0	\$0	\$0	0	\$0	\$0	\$0	0	\$0	\$0	0	\$0	\$0	0	\$0	\$0	\$0					
Tuscarora Township	0	\$0	\$0	0	\$0	\$0	\$0	0	\$0	\$0	\$0	0	\$0	\$0	\$0	0	\$0	\$0	0	\$0	\$0	0	\$0	\$0	\$0					
Tyrone Township	*	*	*	*	*	*	*	*	*	*	*	*	*	*	*	*	*	*	*	*	*	*	*	*	*	*				
Watts Township	0	\$0	\$0	0	\$0	\$0	\$0	0	\$0	\$0	\$0	0	\$0	\$0	\$0	0	\$0	\$0	0	\$0	\$0	0	\$0	\$0	\$0					
Wheatfield Township	0	\$0	\$0	0	\$0	\$0	\$0	0	\$0	\$0	\$0	0	\$0	\$0	\$0	0	\$0	\$0	0	\$0	\$0	0	\$0	\$0	\$0					
COUNTY TOTAL	6	\$2,650,000	\$175,000	9	\$650,500	\$2,887,250	\$9,155,000	0	\$0	\$0	\$0	0	\$0	\$0	\$0	0	\$0	\$0	0	\$0	\$0	0	\$0	\$0	\$0					

* Did not provide building permit data.

n/a = Not Available

TABLE P-6
NEW COMMERCIAL ESTABLISHMENTS
(based on issued building permits)
PERRY COUNTY
1999 - 2008

Municipality	1999	2000	2001	2002	2003	2004	2005	2006	2007	2008	Total
Blain Boro.	0	0	0	0	0	0	0	0	0	0	0
Bloomfield Boro.	1	1	0	1	0	0	0	0	0	0	3
Buffalo Twp.	1	0	1	0	0	0	0	0	*	*	2
Carroll Twp.	3	1	0	0	0	0	1	0	*	*	5
Centre Twp.	0	0	0	2	0	0	0	0	*	0	2
Duncannon Boro.	0	0	0	0	0	0	0	0	0	0	0
Greenwood Twp.	1	0	0	0	*	0	0	0	1	0	2
Howe Twp.	2	1	0	0	1	0	0	0	0	0	4
Jackson Twp.	1	0	0	0	0	0	1	0	*	*	2
Juniata Twp.	0	0	0	0	0	1	0	0	0	1	2
Landisburg Boro.	0	0	0	0	0	0	0	0	0	0	0
Liverpool Boro.	0	0	0	0	1	0	1	0	*	*	2
Liverpool Twp.	0	4	*	0	0	0	0	0	0	0	4
Marysville Boro.	*	0	0	0	0	0	0	0	*	0	0
Miller Twp.	0	0	1	0	0	0	0	0	0	0	1
Millerstown Boro.	0	0	0	0	0	0	0	0	0	0	0
New Buffalo Boro.	0	0	0	0	0	0	0	0	*	*	0
Newport Boro.	0	0	0	0	0	0	0	0	*	*	0
NE Madison Twp.	1	0	1	0	0	0	0	0	0	0	2
Oliver Twp.	0	0	0	0	0	2	0	0	1	1	4
Penn Twp.	0	3	1	3	1	8	1	1	2	2	22
Rye Twp.	1	0	0	0	0	0	0	0	0	0	1
Saville Twp.	0	0	0	0	0	0	0	0	*	*	0
SW Madison Twp.	0	3	0	2	0	7	0	0	1	0	13
Spring Twp.	2	0	0	0	0	0	2	1	0	2	7
Toboyne Twp.	0	0	0	0	0	0	0	0	0	0	0
Tuscarora Twp.	0	1	0	0	0	0	0	0	*	0	1
Tyrone Twp.	*	*	*	*	*	*	0	1	*	*	1
Watts Twp.	0	0	0	0	0	0	0	1	0	0	1
Wheatfield Twp.	0	0	0	0	0	1	0	0	0	0	1
COUNTY TOTAL	13	14	4	8	3	19	6	4	5	6	82

*Did not provide building permit data.

TABLE P-7
NEW INDUSTRIAL ESTABLISHMENTS
(based on issued building permits)
PERRY COUNTY
1999-2008

Municipality	1999	2000	2001	2002	2003	2004	2005	2006	2007	2008	Total
Blain Boro.	0	0	0	0	0	0	0	0	0	0	0
Bloomfield Boro.	0	0	0	0	0	0	0	0	0	0	0
Buffalo Twp.	0	0	1	0	0	0	0	0	*	*	1
Carroll Twp.	2	0	0	0	0	0	0	0	*	*	2
Centre Twp.	0	0	0	0	0	0	0	0	*	0	0
Duncannon Boro.	0	0	0	0	0	0	0	0	0	0	0
Greenwood Twp.	0	0	0	0	*	0	0	0	0	0	0
Howe Twp.	0	0	0	0	0	0	0	0	0	0	0
Jackson Twp.	2	0	0	0	0	0	0	0	*	*	2
Juniata Twp.	0	0	0	0	0	0	0	0	0	0	0
Landisburg Boro.	0	0	0	0	0	0	0	0	0	0	0
Liverpool Boro.	0	0	0	0	0	0	0	0	*	*	0
Liverpool Twp.	0	0	*	0	0	0	0	0	0	0	0
Marysville Boro.	*	0	0	0	0	0	0	0	*	0	0
Miller Twp.	0	0	0	0	0	0	0	0	0	0	0
Millerstown Boro.	0	0	0	0	0	0	0	0	0	0	0
New Buffalo Boro.	0	0	0	0	0	0	0	0	*	*	0
Newport Boro.	0	0	0	0	0	0	0	0	*	*	0
NE Madison Twp.	0	0	0	0	0	0	0	0	0	0	0
Oliver Twp.	0	0	0	0	0	0	0	0	0	0	0
Penn Twp.	0	0	0	0	0	0	0	0	0	0	0
Rye Twp.	0	0	0	0	0	0	0	0	0	0	0
Saville Twp.	0	0	0	0	0	0	0	0	*	*	0
SW Madison Twp.	0	0	0	0	0	0	0	0	0	0	0
Spring Twp.	0	0	0	0	0	0	0	1	0	0	1
Toboyne Twp.	*	0	0	0	0	0	0	0	0	0	0
Tuscarora Twp.	0	0	0	0	0	0	0	0	*	0	0
Tyrone Twp.	0	*	*	*	*	0	0	0	*	*	0
Watts Twp.	0	0	0	0	0	0	0	0	0	0	0
Wheatfield Twp.	0	0	0	0	0	0	0	0	0	0	0
COUNTY TOTALS	4	0	1	0	0	0	0	1	0	0	6

*Did not provide building permit data.

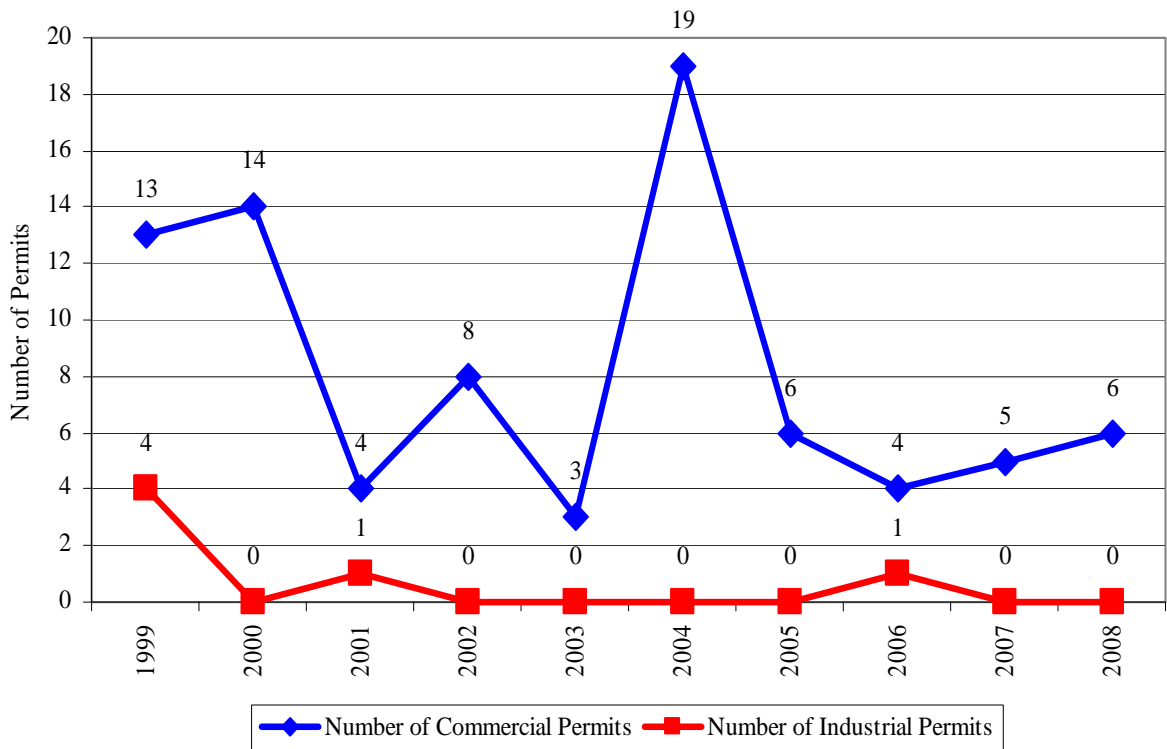
**TABLE P-8
COMMERCIAL & INDUSTRIAL ESTIMATED CONSTRUCTION COSTS* **
(based on issued building permits)
PERRY COUNTY
1999- 2008**

Year	COMMERCIAL				INDUSTRIAL			
	New Establishments		Improvements/Expansions		New Establishments		Improvements/Expansions	
	Number of Permits	Estimated Construction Costs	Number of Permits	Estimated Construction Costs	Number of Permits	Estimated Construction Costs	Number of Permits	Estimated Construction Costs
1999	13	\$1,588,124	16	\$562,240	4	\$686,000	4	\$359,463
2000	14	\$1,495,000	19	\$755,087	0	\$0	8	\$176,500
2001	4	\$328,000	13	\$790,458	1	\$159,000	2	\$34,200
2002	8	\$7,250,500	14	\$941,700	0	\$0	2	\$235,000
2003	3	\$1,384,985	13	\$587,700	0	\$0	0	\$0
2004	19	\$1,200,656	10	\$83,500	0	\$0	0	\$0
2005	6	* **\$275,000	23	* **\$51,200	0	\$0	0	\$0
2006	4	* **\$30,000	2	* **\$113,000	1	**	1	n/a
2007	5	* **\$4,386,000	10	* **\$5,434,761	0	\$0	0	\$0
2008	6	* **\$265,000	9	* **\$650,500	0	\$0	0	\$0

*Based on responses to yearly building permit surveys. In some years not all municipalities responded.

** n/a = Not Available. Some municipalities do not include constructions costs in building permits.

**CHART P-2
NUMBER OF PERMITS FOR NEW COMMERCIAL & INDUSTRIAL ESTABLISHMENTS
PERRY COUNTY
1999-2008**



COUNTY COMPARISONS

Cumberland County

Dauphin County

Perry County

Table C-D-P 1:	New Dwelling Unit Comparison	Page 35
Chart C-D-P 1:	New Dwelling Unit Comparison	Page 36
Table C-D-P 2:	New Commercial Establishments Comparison	Page 37
Chart C-D-P 2:	New Commercial Establishments Comparison	Page 38
Table C-D-P 3:	New Industrial Establishments Comparison	Page 39
Chart C-D-P 3:	New Industrial Establishments Comparison	Page 40

**TABLE C-D-P 1
NEW DWELLING UNITS COMPARISON*
(based on issued building permits)
Cumberland, Dauphin & Perry Counties
1987 - 2008**

Year	Cumberland County	Dauphin County	Perry County	Total
1987	1,526	1,619	376	3,521
1988	1,572	1,475	349	3,396
1989	1,297	1,396	324	3,017
1990	1,576	1,248	305	3,129
1991	1,130	1,034	296	2,460
1992	1,140	1,136	247	2,523
1993	1,221	1,431	195	2,847
1994	1,070	1,174	311	2,555
1995	902	973	230	2,105
1996	1,113	1,212	245	2,570
1997	1,392	1,470	269	3,131
1998	1,282	1,068	282	2,632
1999	1,426	1,027	260	2,713
2000	1,098	814	249	2,161
2001	1,129	1,016	204	2,349
2002	1,644	892	257	2,793
2003	1,561	1,313	245	3,119
2004	1,393	1,028	291	2,712
2005	1,489	1,190	242	2,921
2006	1,321	850	126	2,297
2007	1,570	843	73	2,486
2008	1,266	592	87	1,945
TOTAL	29,118	24,801	5,463	59,382

* Based on municipalities which responded to Annual Building Permit Survey

CHART C-D-P 1
NEW DWELLING UNIT COMPARISON
 (based on issued building permits)
Cumberland, Dauphin & Perry Counties
 1987 - 2008

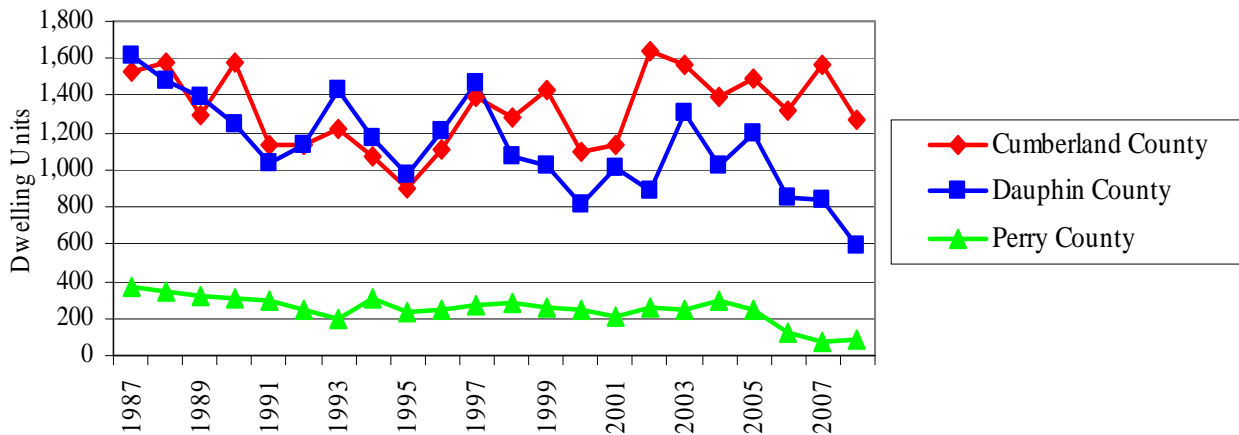


Table C-D-P 1 on Page 35 and Chart C-D-P 1, above, illustrate the fluctuations in residential building permit activity for Cumberland, Dauphin and Perry Counties from 1987 to 2008. During this twenty-two year time span, Cumberland County peaked in 2002 at 1,644 residential unit building permits issued. Dauphin County and Perry County each peaked in 1987 at 1,619 and 376, respectively. The least number of residential unit building permits were issued in 1995 in Cumberland County at 902 residential building permits; Dauphin County in 2008 at 592; and Perry County in 2007 at 73 (8 municipalities did not respond to the 2008 annual building permit survey).

Dauphin County residential unit building permits last exceeded Cumberland County permits in 1997 with Dauphin County municipalities issuing building permits for 1,470 residential dwelling units; and Cumberland County municipalities issuing permits for 1,392 dwelling units. Since 1998 Cumberland County’s municipalities have exceeded Dauphin County municipalities in the number of building permits issued for residential dwelling units. In 2008, Cumberland County issued building permits for more than twice as many dwelling units as Dauphin County (1,266 and 592, respectively).

Decline in Building Permits Issued For New Dwellings
1987-2008

Cumberland County: 1,526 to 1,266 (-17%)
 Dauphin County: 1,619 to 592 (-63%)
 Perry County: 376 to 87 (-77%)

TABLE C-D-P 2
NEW COMMERCIAL ESTABLISHMENTS COMPARISON*
(based on issued building permits)
Cumberland, Dauphin & Perry Counties
1987 - 2008

Year	Cumberland County	Dauphin County	Perry County	Total
1987	113	80	11	204
1988	149	102	15	266
1989	102	128	7	237
1990	60	105	5	170
1991	47	57	8	112
1992	36	70	12	118
1993	49	81	7	137
1994	53	73	3	129
1995	53	64	12	129
1996	53	53	13	119
1997	71	83	3	157
1998	73	69	12	154
1999	88	84	13	185
2000	63	116	14	193
2001	62	72	4	138
2002	76	38	8	122
2003	51	81	3	135
2004	67	79	19	165
2005**	68	75	6	149
2006	59	81	4	144
2007	50	50	5	105
2008	41	89	6	136
Total	1,484	1,730	190	3,404

* Based on municipalities which responded to Annual Building Permit Survey

** In 2005 Swatara Township in Dauphin County included Industrial in with Commercial

CHART C-D-P 2
NEW COMMERCIAL ESTABLISHMENTS COMPARISON
 (based on building permits)
Cumberland, Dauphin & Perry Counties
1987—2008
 [** In 2005 Swatara Township included Industrial in with Commercial]

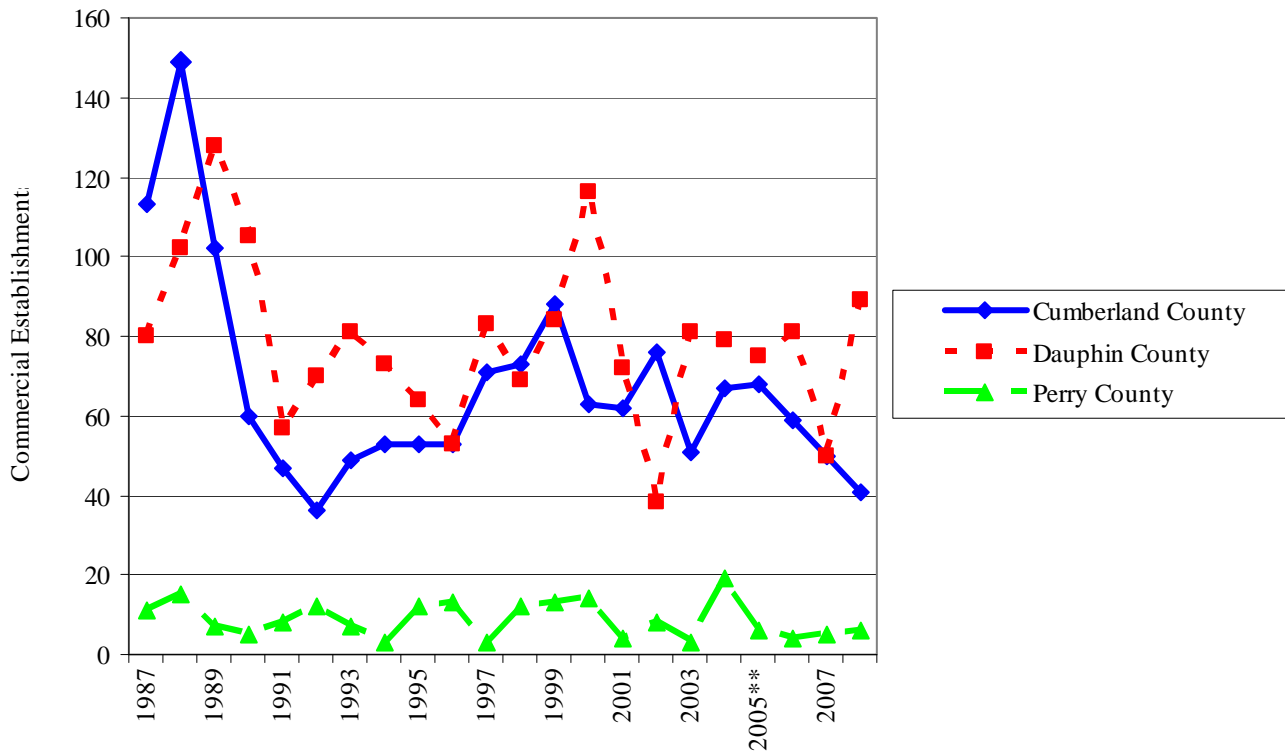


Table C-D-P 2 on Page 37 and Chart C-D-P 2, above, illustrate the fluctuations in Commercial building permit activity for Cumberland, Dauphin and Perry Counties from 1987 to 2008. Cumberland County peaked in 1988 with building permits issued for 149 commercial establishments; Dauphin County in 1989 at 128 commercial establishments; and Perry County in 2004 at 19 commercial establishments. In 1992 in Cumberland County building permits were issued for the lowest number of commercial establishments (36); in Dauphin County it was 38 commercial establishments in 2002; in Perry County three commercial establishments in 1994, 1997 and 2003 were permitted.

Between 1987 And 2008 Building Permits
Were Issued For 3,404 New Commercial Establishments
In Cumberland, Dauphin & Perry Counties

TABLE C-D-P 3
NEW INDUSTRIAL ESTABLISHMENTS
COMPARISON* **
(based on issued building permits)
Cumberland, Dauphin & Perry Counties
1987 - 2008

Year	Cumberland County	Dauphin County	Perry County	Total
1987	16	8	6	30
1988	19	2	1	22
1989	11	11	3	25
1990	11	5	1	17
1991	5	9	1	15
1992	11	8	1	20
1993	2	3	0	5
1994	6	9	1	16
1995	3	16	5	24
1996	14	18	4	36
1997	3	6	2	11
1998	3	11	1	15
1999	14	8	4	26
2000	13	10	0	23
2001	10	6	1	17
2002	2	2	0	4
2003	2	4	0	6
2004	2	9	0	11
2005**	2	5	0	7
2006	6	5	1	12
2007	6	3	0	9
2008	7	7	0	14
Total	168	165	32	365

* Based on municipalities which responded to Annual Building Permit Survey

** In 2005 Swatara Township in Dauphin County included Industrial in with Commercial

CHART C-D-P 3
NEW INDUSTRIAL ESTABLISHMENT
COMPARISON**
Cumberland, Dauphin, Perry Counties
1987—2008
 [** In 2005 Swatara Township included Industrial in with Commercial]

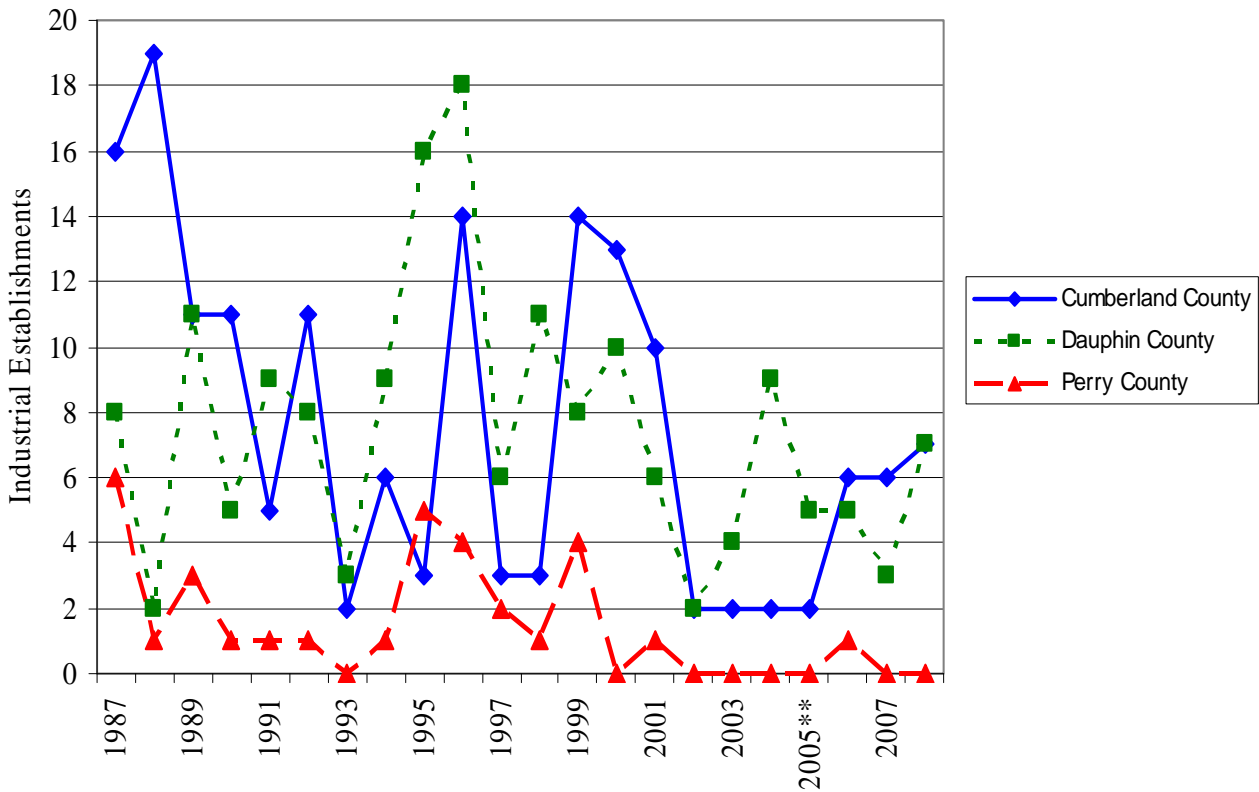


Table C-D-P-3 on Page 39 and Chart C-D-P-3, above illustrate the fluctuations in industrial building permit activity for Cumberland, Dauphin and Perry Counties from 1987 to 2008. During this twenty-two year time span, Cumberland County peaked in 1988 with building permits issued for 19 industrial establishments; Dauphin County in 1996 at 18 industrial establishments; and Perry County in 1987 at six industrial establishments. The least number of industrial establishments (2) for which building permits were issued was in 1993, 2002, 2003, 2004 & 2005 for Cumberland County; 1988 and 2002 for two industrial establishments in Dauphin County; and zero industrial establishments in Perry County in 1993, 2000, 2002, 2003, 2004, 2005, 2007 & 2008. For the twenty-two year time period, Cumberland County and Dauphin County issued nearly the same total number of permits for new industrial establishments, 168 and 165, respectively.

Between 1987 And 2008 Building Permits Were Issued For 365 New Industrial Establishments
In Cumberland, Dauphin & Perry Counties

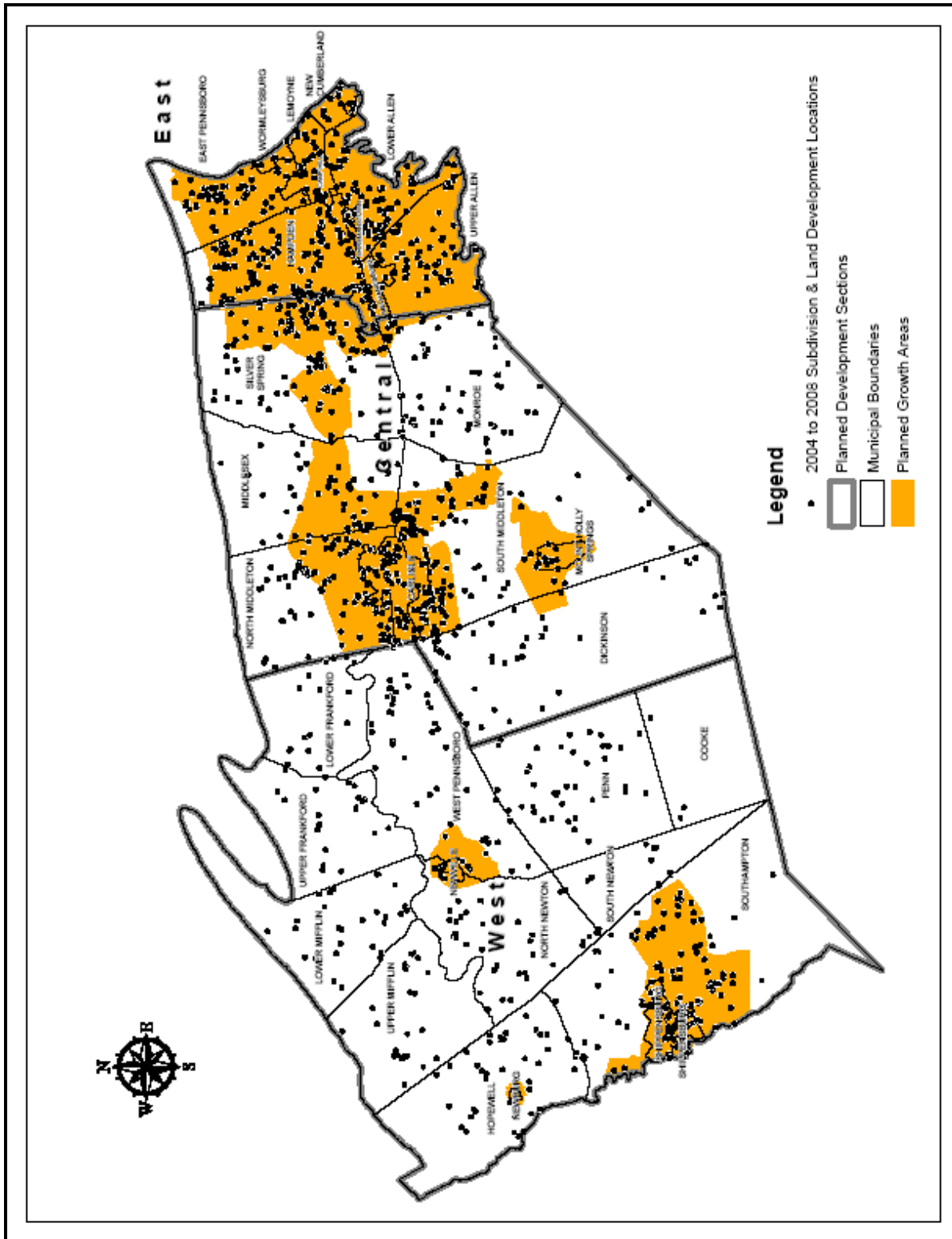
PROSPECTIVE, ANTICIPATED DEVELOPMENT IN PLANNED GROWTH AREAS (PGAs)

Planned Growth Areas (PGAs) (**MAP 1, MAP 2 & MAP 3**) were designated in the Tri-County Regional Growth Management Plan (RGMP) which was adopted July 24, 2003. The PGAs delineated areas are already provided with existing public services, such as water, sewer, transportation facilities, emergency services, parks and schools, establishing the most practical development areas to accommodate future land development. The intent of the PGAs is to guide and coordinate land use densities and intensities where there is existing and available capital infrastructure. The PGA planning approach provides recommendations by establishing target areas appropriate for more intense economic activity and urban and suburban development. The RGMP identified considerable benefits to encouraging municipal development within PGAs:

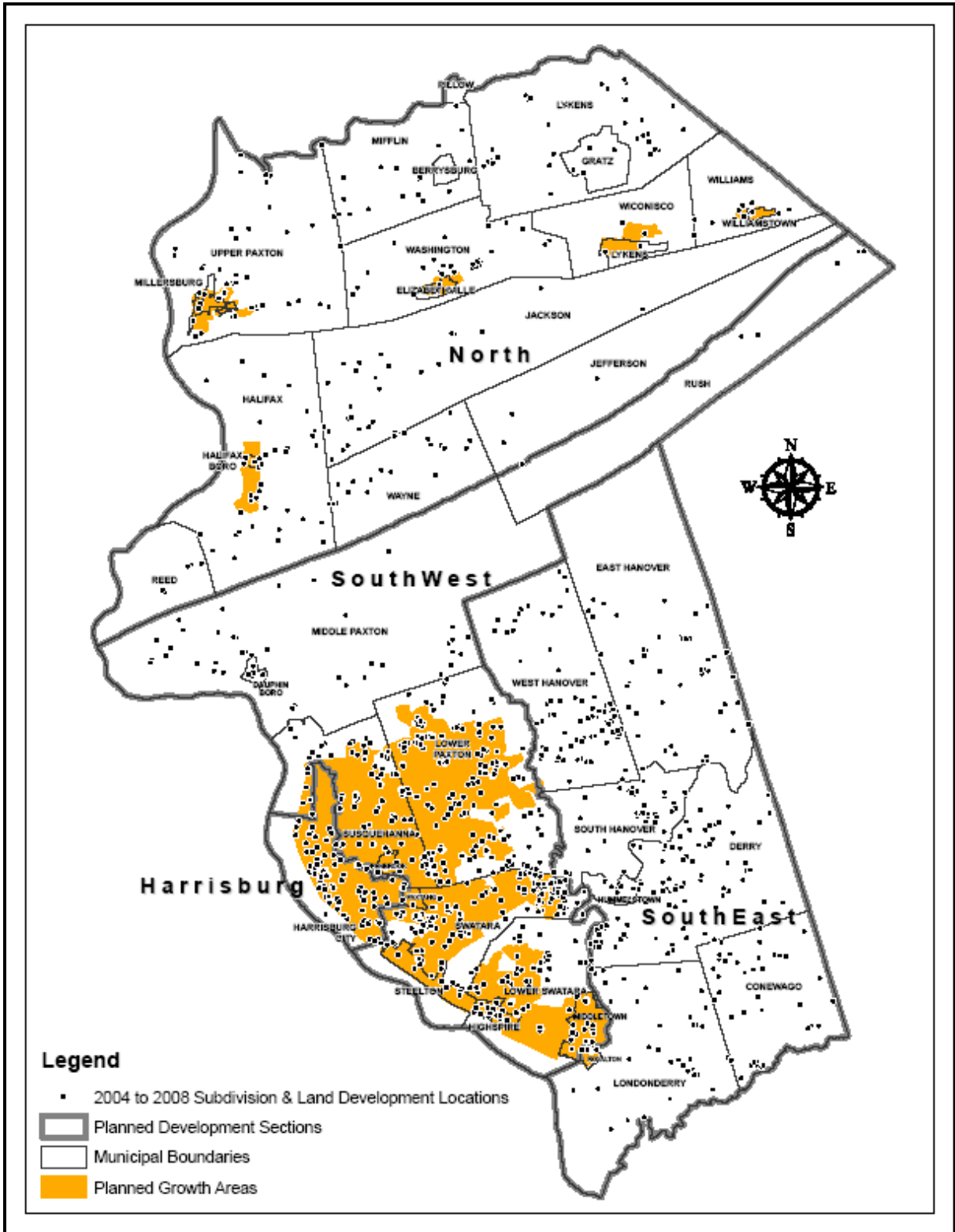
1. *Community Revitalization:* Encouraging more intense or compact development in areas served by public services, developers seek available sites for development, infill development or redevelopment.
2. *Improved Tax Base in Community Centers:* The tax base of the Region's urban centers, community centers and inner suburbs can be improved through the redevelopment of underutilized sites.
3. *Efficient Utilization of Public Services:* Infill and redevelopment promotes the use of existing public services and the more cost efficient use of existing infrastructure. This can improve the economical use of tax dollars by locating development and additional infrastructure near existing public service delivery systems.
4. *Infrastructure Cost Savings:* Guiding growth to areas already served with existing infrastructure offers savings to the municipality and developer, and can result in reduced home prices for home buyers.
5. *Improved Infrastructure Planning:* Knowing where development may be thoughtfully expanded allows municipalities, authorities, utilities and HATS (Harrisburg Area Transportation Study) to engage in effective long range capital improvement planning. Public investment for new or improved infrastructure will be more cost effective.
6. *Incentive for Reinvestment and Preservation of Community Identity:* A PGA focuses development activity toward existing community development centers suitable for reinvestment, historical site analysis and preservation which may lead to economically and physically more revitalized communities, while also preserving neighborhood and community identities by clearly defining their edges and preventing them from sprawling together.
7. *Reduce Traffic Congestion:* More compact development patterns and mixed-use development promoted by PGAs can reduce vehicle trip lengths and enhance highway use.
8. *Opportunities to Enhance Transit and Alternative Forms of Transportation:* More concentrated development and increased densities can have a positive effect on transit ridership and improve the viability of bicycle, pedestrian densities and transit systems.
9. *Natural Resource and Agriculture Lands Conservation:* If fully implemented, PGAs can protect farmland and natural resources. They can also inhibit "hop scotch" land speculation in prime farming areas by creating two separate markets for land, one rural and the other urban/suburban.
10. *Urban Residential Development Provides More Housing Options:* Through encouraging increased residential development densities, multi-family housing and smaller lots for homes offers more variety of housing options for lower income families seeking affordable housing.

MAPs 1, 2 & 3 denote Subdivision and Land Development plans (including preliminary, final and preliminary/final plans, and lot additions) locations. It should be noted that a considerable number of subdivision and land development plans were processed in 2004 through 2008 which were located outside the PGAs designated in the 2003 Regional Growth Management Plan. It is recommended that municipalities consider the location of PGAs, and the benefits of approving development within them, when processing subdivision and land development plans. It should be further noted that the plans depicted on the maps indicate "processed" plans and do not reflect actual construction permits or reflect a time line for when the subject property will be developed. This report and data will continue to be refined in an effort to represent net potential development.

MAP 1 CUMBERLAND COUNTY PLANNED GROWTH AREAS (PGAs) and SUBDIVISION & LAND DEVELOPMENT PLANS PROCESSED IN 2004-2008



**MAP 2
DAUPHIN COUNTY
PLANNED GROWTH AREAS (PGAs)
SUBDIVISION & LAND DEVELOPMENT PLANS PROCESSED IN 2004-2008**



**MAP 3
PERRY COUNTY
PLANNED GROWTH AREAS (PGAs)
SUBDIVISION & LAND DEVELOPMENT PLANS PROCESSED IN 2004-2008**

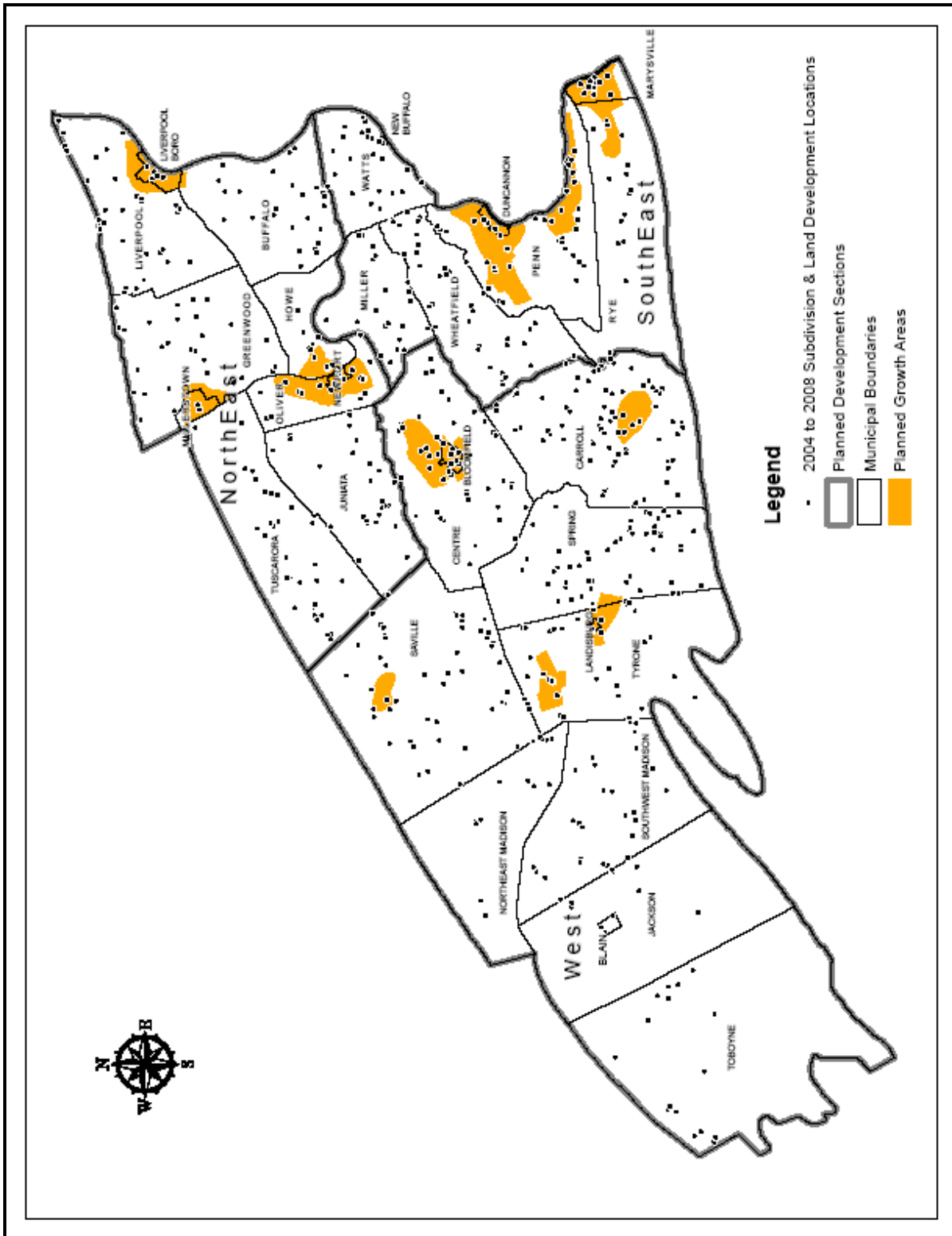
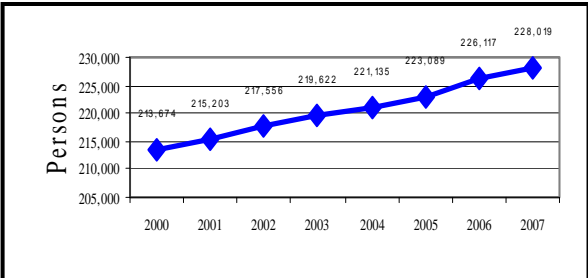


TABLE A-1 CUMBERLAND COUNTY U.S. CENSUS POPULATION ESTIMATES 2001, 2002, 2003, 2004, 2005, 2006, & 2007									
Area	2000 Census	2001 Estimate	2002 Estimate	2003 Estimate	2004 Estimate	2005 Estimate	2006 Estimate	2007 Estimate	2000 - 2007 Est. Difference
Camp Hill	7,636	7,587	7,562	7,520	7,461	7,424	7,414	7,398	-238
Carlisle	17,970	18,040	18,100	18,078	18,071	18,108	18,272	18,351	381
Cooke	117	133	136	141	148	155	159	159	42
Dickinson	4,702	4,770	4,844	4,925	4,995	5,119	5,204	5,284	582
East Pennsboro	18,254	18,422	18,711	19,111	19,421	19,610	19,687	19,791	1,537
Hampden	24,135	24,467	24,790	25,108	25,373	25,787	26,298	26,669	2,534
Hopewell	2,096	2,126	2,159	2,189	2,214	2,243	2,255	2,264	168
Lemoyne	3,995	3,976	3,973	3,966	3,953	3,952	3,968	3,977	-18
Lower Allen	17,437	17,350	17,572	17,636	17,590	17,587	17,666	17,804	367
Lower Frankford	1,823	1,831	1,838	1,835	1,832	1,836	1,835	1,837	14
Lower Mifflin	1,620	1,621	1,626	1,618	1,607	1,599	1,595	1,587	-33
Mechanicsburg	9,042	8,968	8,947	8,906	8,838	8,818	8,802	8,783	-259
Middlesex	6,669	6,683	6,726	6,745	6,759	6,795	6,843	6,816	147
Monroe	5,530	5,581	5,630	5,659	5,687	5,712	5,766	5,799	269
Mt. Holly Springs	1,925	1,918	1,918	1,919	1,916	1,911	1,912	1,914	-11
Newburg	372	369	368	365	363	361	360	364	-8
New Cumberland	7,349	7,285	7,260	7,218	7,158	7,127	7,115	7,088	-261
Newville	1,367	1,354	1,349	1,340	1,329	1,323	1,319	1,314	-53
North Middleton	10,197	10,206	10,275	10,359	10,442	10,602	10,849	11,082	885
North Newton	2,169	2,197	2,213	2,239	2,249	2,262	2,313	2,329	160
Penn	2,807	2,850	2,890	2,929	2,932	2,947	3,009	3,059	252
Shippensburg Boro.	4,467	4,478	4,491	4,493	4,472	4,465	4,460	4,462	-5
Shippensburg Twp.	4,504	4,489	4,539	4,537	4,590	4,580	4,880	4,774	270
Shiremanstown	1,521	1,508	1,506	1,499	1,488	1,480	1,477	1,472	-49
Silver Spring	10,592	11,097	11,381	11,760	12,157	12,462	12,731	12,910	2,318
Southhampton	4,787	4,876	4,958	5,042	5,117	5,400	5,636	5,867	1,080
South Middleton	12,939	13,192	13,370	13,536	13,713	13,836	14,069	14,262	1,323
South Newton	1,290	1,293	1,298	1,304	1,305	1,311	1,311	1,308	18
Upper Allen	15,338	15,489	15,914	16,391	16,670	16,909	17,478	17,842	2,504
Upper Frankford	1,807	1,806	1,808	1,818	1,824	1,854	1,858	1,853	46
Upper Mifflin	1,347	1,357	1,382	1,395	1,399	1,417	1,436	1,439	92
West Pennsboro	5,263	5,299	5,325	5,359	5,400	5,446	5,493	5,520	257
Wormleysburg	2,607	2,585	2,697	2,682	2,662	2,651	2,647	2,641	34
TOTAL	213,674	215,203	217,556	219,622	221,135	223,089	226,117	228,019	14,345

Source: U.S. Census
Note: 2008 Estimates will become available in July 2009

CHART A-1
2000 CENSUS & 2001—2007 POPULATION ESTIMATES: CUMBERLAND COUNTY



**It Is Estimated The Cumberland County
Population Has Increased 6.7%
Between 2000 And 2007.**

**TABLE A-2
DAUPHIN COUNTY
U.S. CENSUS POPULATION ESTIMATES
2001, 2002, 2003, 2004, 2005, 2006, & 2007**

Area	2000 Census	2001 Estimate	2002 Estimate	2003 Estimate	2004 Estimate	2005 Estimate	2006 Estimate	2007 Estimate	2000 - 2007 Est. Difference
Berrysburg Boro.	354	353	350	348	345	343	340	340	-14
Conewago Twp.	2,847	2,848	2,860	2,863	2,856	2,926	2,995	3,028	181
Dauphin Boro.	773	714	714	719	719	725	720	721	-52
Derry Twp.	21,273	21,297	21,541	21,715	21,695	21,814	21,844	21,971	698
East Hanover Twp.	5,322	5,328	5,416	5,456	5,433	5,419	5,403	5,427	105
Elizabethville Boro.	1,344	1,342	1,325	1,317	1,301	1,295	1,283	1,284	-60
Gratz Boro.	676	675	672	670	663	661	660	660	-16
Halifax Boro.	875	874	865	860	849	844	835	834	-41
Halifax Twp.	3,329	3,331	3,344	3,346	3,328	3,351	3,337	3,391	62
Harrisburg City	48,950	48,879	48,393	48,136	47,597	47,472	47,164	47,196	-1,754
Highspire Boro.	2,720	2,716	2,688	2,672	2,640	2,625	2,601	2,610	-110
Hummelstown Boro.	4,360	4,357	4,356	4,377	4,395	4,402	4,382	4,422	62
Jackson Twp.	1,728	1,731	1,762	1,772	1,767	1,769	1,773	1,787	59
Jefferson Twp.	327	324	324	322	324	324	323	325	-2
Londonderry Twp.	5,224	5,217	5,230	5,236	5,199	5,203	5,172	5,191	-33
Lower Paxton Twp.	44,424	44,401	44,925	44,968	44,776	44,909	44,893	45,221	797
Lower Swatara Twp.	8,149	8,276	8,301	8,327	8,301	8,343	8,342	8,468	319
Lykens Boro.	1,937	1,917	1,908	1,896	1,870	1,862	1,846	1,853	-84
Lykens Twp.	1,095	1,110	1,118	1,129	1,131	1,135	1,124	1,125	30
Middle Paxton Twp.	4,823	4,895	4,917	4,932	4,948	4,977	4,984	5,027	204
Middletown Boro.	9,242	9,183	9,152	3,101	8,994	8,944	8,858	8,854	-388
Mifflin Twp.	662	670	679	686	688	695	698	709	47
Millersburg Boro.	2,562	2,541	2,534	2,518	2,491	2,491	2,467	2,467	-95
Paxtang Boro.	1,570	1,553	1,546	1,535	1,515	1,505	1,491	1,491	-79
Penbrook Boro.	3,044	3,012	3,004	2,984	2,945	2,926	2,909	2,920	-124
Pillow Boro.	304	301	300	298	294	292	289	289	-15
Reed Twp.	182	180	184	185	185	186	188	193	11
Royalton Boro.	963	959	956	950	944	941	931	943	-20
Rush Twp.	180	178	178	177	175	174	174	178	-2
South Hanover Twp.	4,793	4,790	4,797	4,805	5,374	5,574	6,100	6,198	1,405
Steelton Boro.	5,858	5,800	5,778	5,759	5,702	5,667	5,609	5,610	-248
Susquehanna Twp.	21,895	22,132	22,221	22,542	22,592	22,755	22,782	22,846	951
Swatara Twp.	22,611	22,494	22,479	22,486	22,428	22,414	22,320	22,408	-203
Upper Paxton Twp.	3,930	3,935	3,964	3,969	3,963	4,045	4,038	4,067	137
Washington Twp.	2,047	2,046	2,047	2,044	2,033	2,036	2,018	2,021	-26
Wayne Twp.	1,184	1,215	1,247	1,255	1,271	1,285	1,294	1,296	112
West Hanover Twp.	6,505	5,578	6,942	7,293	7,703	8,050	8,409	8,760	2,255
Wiconisco Twp.	1,168	1,156	1,151	1,143	1,127	1,121	1,110	1,110	-58
Williams Twp.	1,135	1,127	1,123	1,119	1,117	1,123	1,113	1,114	-21
Williamstown Boro.	1,433	1,417	1,411	1,401	1,382	1,372	1,357	1,355	-78
TOTAL	251,798	251,678	252,702	253,311	253,060	253,995	254,176	255,710	3,912

Source: U. S. Census

Note: 2008 Estimates will become available in July 2009

TABLE A-3
PERRY COUNTY
U.S. CENSUS POPULATION ESTIMATES
2001, 2002, 2003, 2004, 2005, 2006 & 2007

Area	2000 Census	2001 Estimate	2002 Estimate	2003 Estimate	2004 Estimate	2005 Estimate	2006 Estimate	2007 Estimate	2000-2007 Est. Difference
Blain Boro.	252	250	248	247	246	246	246	246	-6
Bloomfield Boro.	1,077	1,095	1,093	1,096	1,091	1,091	1,094	1,092	15
Buffalo Twp.	1128	1,128	1,130	1,139	1,135	1,137	1,146	1,147	19
Carroll Twp.	5,095	5,163	5,196	5,244	5,298	5,305	5,330	5,327	232
Centre Twp.	2,209	2,218	2,221	2,245	2,262	2,264	2,280	2,282	73
Duncannon Boro.	1,508	1,500	1,493	1,488	1,492	1,496	1,503	1,498	-10
Greenwood Twp.	1010	1,027	1,032	1,039	1,045	1,046	1,056	1,058	48
Howe Twp.	493	497	494	495	493	493	497	497	4
Jackson Twp.	525	529	532	538	541	541	550	554	29
Juniata Twp.	1,359	1,359	1,363	1,394	1,418	1,430	1,440	1,442	83
Landisburg Boro.	195	193	192	191	190	190	191	190	-5
Liverpool Boro.	876	876	874	884	882	884	887	886	10
Liverpool Twp.	966	966	968	977	973	974	983	985	19
Marysville Boro.	2306	2,304	2,328	2,377	2,426	2,428	2,435	2,431	125
Miller Twp.	953	967	974	977	985	985	991	991	38
Millerstown Boro.	679	679	680	684	681	682	684	684	5
New Buffalo Boro.	123	122	121	121	120	120	121	120	-3
Newport Boro.	1,506	1,492	1,482	1,476	1,467	1,467	1,470	1,467	-39
Northeast Madison Twp.	856	854	854	858	862	863	871	873	17
Oliver Twp.	2,061	2,055	2,055	2,059	2,056	2,058	2,067	2,066	5
Penn Twp.	3,013	3,047	3,069	3,098	3,107	3,136	3,196	3,211	198
Rye Twp.	2327	2,374	2,379	2,409	2,424	2,451	2,488	2,509	182
Saville Twp.	2,204	2,218	2,232	2,255	2,275	2,294	2,312	2,315	111
Southwest Madison Twp.	856	853	857	866	873	874	883	886	30
Spring Twp.	2,021	2,030	2,037	2,067	2,084	2,086	2,101	2,103	82
Toboyne Twp.	494	496	497	500	499	500	507	516	22
Tuscarora Twp.	1122	1,130	1,141	1,157	1,168	1,184	1,193	1,196	74
Tyrone Twp.	1863	1,857	1,853	1,854	1,852	1,854	1,868	1,871	8
Watts Twp.	1196	1,198	1,200	1,205	1,223	1,224	1,232	1,232	36
Wheatfield Twp.	3,329	3,330	3,343	3,367	3,381	3,425	3,465	3,488	159
TOTAL	43,602	43,807	43,938	44,307	44,549	44,728	45,087	45,163	1,561

Source: U.S. Census

Note: 2008 Estimates will become available in July 2009

**It Is Estimated The Perry County
Population Has Increased 3.6%
Between 2000 And 2007.**

TRI-COUNTY REGIONAL PLANNING COMMISSION

112 Market Street – 2nd Floor
Harrisburg, PA 17101

Phone: (717) 234-2639

Fax: (717) 234-4058

www.tcrpc-pa.org

PLANNING STAFF

James W. Szymborski, AICP
Executive Director

Timothy P. Reardon, AICP
Associate Director

Omar A. Syed, AICP
Planner III

Jeffrey Kelly, AICP
Planner III

Diane M. Myers-Krug, AICP
Planner III

Janine M. Park
Planner III

John (Drew) Ames
Planner II

Jason Finnerty
Planner II

Karen Green
Planner II

Matthew Jones
Planner I
(Resigned 1/31/08)

Mike Kmiecinski
Planner I

Carl L. (Chip) Millard
Planner II
(Resigned 3/14/08)

Alfred Sundara, AICP
Planner II

Jessica Carter
GIS Coordinator
(Left Commission February 08)

George E. Hubley
GIS Planning Technician

Tim Jones
GIS Planning Technician

Patty L. Buggy
Administrative Coordinator

Donna Clay
Administrative Assistant / Receptionist